

July 12, 2019

IDEA PUBLIC SCHOOLS – IDEA Owassa Phase II

GOMEZ MENDEZ SAENZ, INC.
1150 PAREDES LINE RD.
BROWNSVILLE, TEXAS 78526
(956) 546-0110



ADDENDUM NO. 2

A. PURPOSE AND INTENT

This addendum is issued for the purpose of modifying the plans and specifications for the IDEA PUBLIC SCHOOLS – IDEA Owassa Phase II

This addendum shall become part of the contract and all CONTRACTORS shall be bound by its content. All aspects of the specifications and drawings not covered herein shall remain the same.

The General Conditions and the Special Conditions of the specifications shall govern all parts of the work and apply in full force to this Addendum.

B. SCOPE

I. CLARIFICATIONS:

1. NOTICE TO BIDDERS – Bid Date changed to:
Tuesday July 23, 2019 @ 4:00pm – Same Location.

II. SPECIFICATIONS:

1. Front End Specification, Bid Proposal Form
REVISE *Bid Opening Date*. Bid Proposal Form included in this addendum will become part of the Contract Documents.

III. PLANS:

1. Sheet A1.02 – Site Plan Improvements
 - a. REPLACE Sheet A1.02 Overall Site Plan previously issued with Sheet A1.02 Overall Site Plan Sheet included in this addendum.

MEP Addendum Items: See Attached Information (6 Pages)

End of Addendum 2

LEGEND

- FINISH LEGEND:**
 CONC. SEALED CONCRETE
 C.T. CERAMIC TILE
 GB/PD GYPSUM BOARD PAINTED
 PTD. PAINTED
 RUBBER RUBBER BASE
 V.C.T. VINYL COMPOSITE TILE
 R.T. RADIAL TILE
 Q.T. QUARRY TILE
 WD. WOOD
 EXP/PTD EXPOSED PAINTED
 SUS/GYP SUSPENDED 1/2" MOISTURE RESISTANT GYP BOARD - PAINTED
 S.A.C. SUSPENDED ACOUSTICAL CEILING REFERENCE SPECIFICATIONS FOR TYPES

- WALL HATCH LEGEND:**
 1 HR INDICATES THAT THIS WALL SHALL BE FIRE RATED AND SHALL BE EXTENDED TO UNDERSIDE OF ROOF DECK.
 INDICATES METAL STUD W/ GYP/BRD WALL AS REQUIRED REFERENCE INTERIOR PARTITION SECTIONS

ROOM	ROOM NAME	BASE	FLR.	WALLS				CLG.	CLG. HEIGHTS	REMARKS
				N	S	E	W			
121	RTTC/AVID CLASSROOM	RUBBER	V.C.T.	GB/PTD	GB/PTD	GB/PTD	GB/PTD	SAC I	9'-8"	
121A	COUNSELORS OFFICE	RUBBER	V.C.T.	GB/PTD	GB/PTD	GB/PTD	GB/PTD	SAC I	9'-4"	
121B	COUNSELORS OFFICE	RUBBER	V.C.T.	GB/PTD	GB/PTD	GB/PTD	GB/PTD	SAC I	9'-4"	
121C	COUNSELORS OFFICE	RUBBER	V.C.T.	GB/PTD	GB/PTD	GB/PTD	GB/PTD	SAC I	9'-4"	
122	RISE UNIT (LIFE SKILLS) CLASSROOM	RUBBER	V.C.T.	GB/PTD	GB/PTD	GB/PTD	GB/PTD	SAC I	9'-8"	
122A	STORAGE	RUBBER	V.C.T.	GB/PTD	GB/PTD	GB/PTD	GB/PTD	SAC I	9'-0"	
122B	TOILET	C.T.	C.T.	GB/PTD	GB/PTD	GB/PTD	GB/PTD	SAC III	9'-0"	6'-0" C.T. WAINSCOT
123	12TH GRADE CLASSROOM	RUBBER	V.C.T.	GB/PTD	GB/PTD	GB/PTD	GB/PTD	SAC I	9'-8"	
123A	STORAGE	RUBBER	V.C.T.	GB/PTD	GB/PTD	GB/PTD	GB/PTD	SAC I	9'-0"	
124	12TH GRADE CLASSROOM	RUBBER	V.C.T.	GB/PTD	GB/PTD	GB/PTD	GB/PTD	SAC I	9'-8"	
124A	STORAGE	RUBBER	V.C.T.	GB/PTD	GB/PTD	GB/PTD	GB/PTD	SAC I	9'-0"	
125	12TH GRADE CLASSROOM	RUBBER	V.C.T.	GB/PTD	GB/PTD	GB/PTD	GB/PTD	SAC I	9'-8"	
125A	STORAGE	RUBBER	V.C.T.	GB/PTD	GB/PTD	GB/PTD	GB/PTD	SAC I	9'-0"	
126	12TH GRADE CLASSROOM	RUBBER	V.C.T.	GB/PTD	GB/PTD	GB/PTD	GB/PTD	SAC I	9'-8"	
126A	STORAGE	RUBBER	V.C.T.	GB/PTD	GB/PTD	GB/PTD	GB/PTD	SAC I	9'-0"	
127	12TH GRADE SCIENCE LAB - WET	RUBBER	V.C.T.	GB/PTD	GB/PTD	GB/PTD	GB/PTD	SAC I	9'-8"	
127A	SCIENCE PREP ROOM	RUBBER	V.C.T.	GB/PTD	GB/PTD	GB/PTD	GB/PTD	SAC I	9'-4"	
128	11TH GRADE SCIENCE LAB - DRY	RUBBER	V.C.T.	GB/PTD	GB/PTD	GB/PTD	GB/PTD	SAC I	9'-8"	
128A	STORAGE	RUBBER	V.C.T.	GB/PTD	GB/PTD	GB/PTD	GB/PTD	SAC I	9'-0"	
130	SPECIAL ED CLASSROOM	RUBBER	V.C.T.	GB/PTD	GB/PTD	GB/PTD	GB/PTD	SAC I	9'-8"	
131	11TH GRADE CLASSROOM	RUBBER	V.C.T.	GB/PTD	GB/PTD	GB/PTD	GB/PTD	SAC I	9'-8"	
131A	STORAGE	RUBBER	V.C.T.	GB/PTD	GB/PTD	GB/PTD	GB/PTD	SAC I	9'-0"	
132	11TH GRADE CLASSROOM	RUBBER	V.C.T.	GB/PTD	GB/PTD	GB/PTD	GB/PTD	SAC I	9'-8"	
132A	STORAGE	RUBBER	V.C.T.	GB/PTD	GB/PTD	GB/PTD	GB/PTD	SAC I	9'-0"	
133	11TH GRADE CLASSROOM	RUBBER	V.C.T.	GB/PTD	GB/PTD	GB/PTD	GB/PTD	SAC I	9'-8"	
133A	STORAGE	RUBBER	V.C.T.	GB/PTD	GB/PTD	GB/PTD	GB/PTD	SAC I	9'-0"	
134	COMPUTER LAB	RUBBER	V.C.T.	GB/PTD	GB/PTD	GB/PTD	GB/PTD	SAC I	9'-8"	
134A	STORAGE	RUBBER	V.C.T.	GB/PTD	GB/PTD	GB/PTD	GB/PTD	SAC I	9'-0"	
135	11TH GRADE CLASSROOM	RUBBER	V.C.T.	GB/PTD	GB/PTD	GB/PTD	GB/PTD	SAC I	9'-8"	
135A	STORAGE	RUBBER	V.C.T.	GB/PTD	GB/PTD	GB/PTD	GB/PTD	SAC I	9'-0"	
136	10TH GRADE CLASSROOM	RUBBER	V.C.T.	GB/PTD	GB/PTD	GB/PTD	GB/PTD	SAC I	9'-8"	
136A	STORAGE	RUBBER	V.C.T.	GB/PTD	GB/PTD	GB/PTD	GB/PTD	SAC I	9'-0"	
137	CORRIDOR	RUBBER	V.C.T.	GB/PTD	GB/PTD	GB/PTD	GB/PTD	SAC II	10'-4"	
138	CORRIDOR	RUBBER	V.C.T.	GB/PTD	GB/PTD	GB/PTD	GB/PTD	SAC II	10'-4"	
139	GIRLS TOILETS	C.T.	C.T.	GB/PTD	GB/PTD	GB/PTD	SUS/GYP	9'-0"	6'-0" C.T. WAINSCOT	
140	STAFF TOILET	C.T.	C.T.	GB/PTD	GB/PTD	GB/PTD	SUS/GYP	9'-0"	6'-0" C.T. WAINSCOT	
141	BOYS TOILETS	C.T.	C.T.	GB/PTD	GB/PTD	GB/PTD	SUS/GYP	9'-0"	6'-0" C.T. WAINSCOT	
142	CUSTODIAN CONC.	CONC.	CONC.	GB/PTD	GB/PTD	EXP/PTD	GB/PTD	4'-0" C.T. WAINSCOT @ MOP SINK		
143	IDF	RUBBER	V.C.T.	GB/PTD	GB/PTD	GB/PTD	GB/PTD	SAC IV	9'-4"	
144	STORAGE	RUBBER	V.C.T.	GB/PTD	GB/PTD	GB/PTD	EXP/PTD			CLG @ 2ND LVL R.T. TREADS
145	STAIRWELL	RUBBER	R.T.	GB/PTD	GB/PTD	GB/PTD	GB/PTD			
146	RISE UNIT (LIFE SKILLS) CLASSROOM	RUBBER	V.C.T.	GB/PTD	GB/PTD	GB/PTD	GB/PTD	SAC I	9'-8"	

02 FLOOR PLAN ENLARGEMENT
 NOT TO SCALE

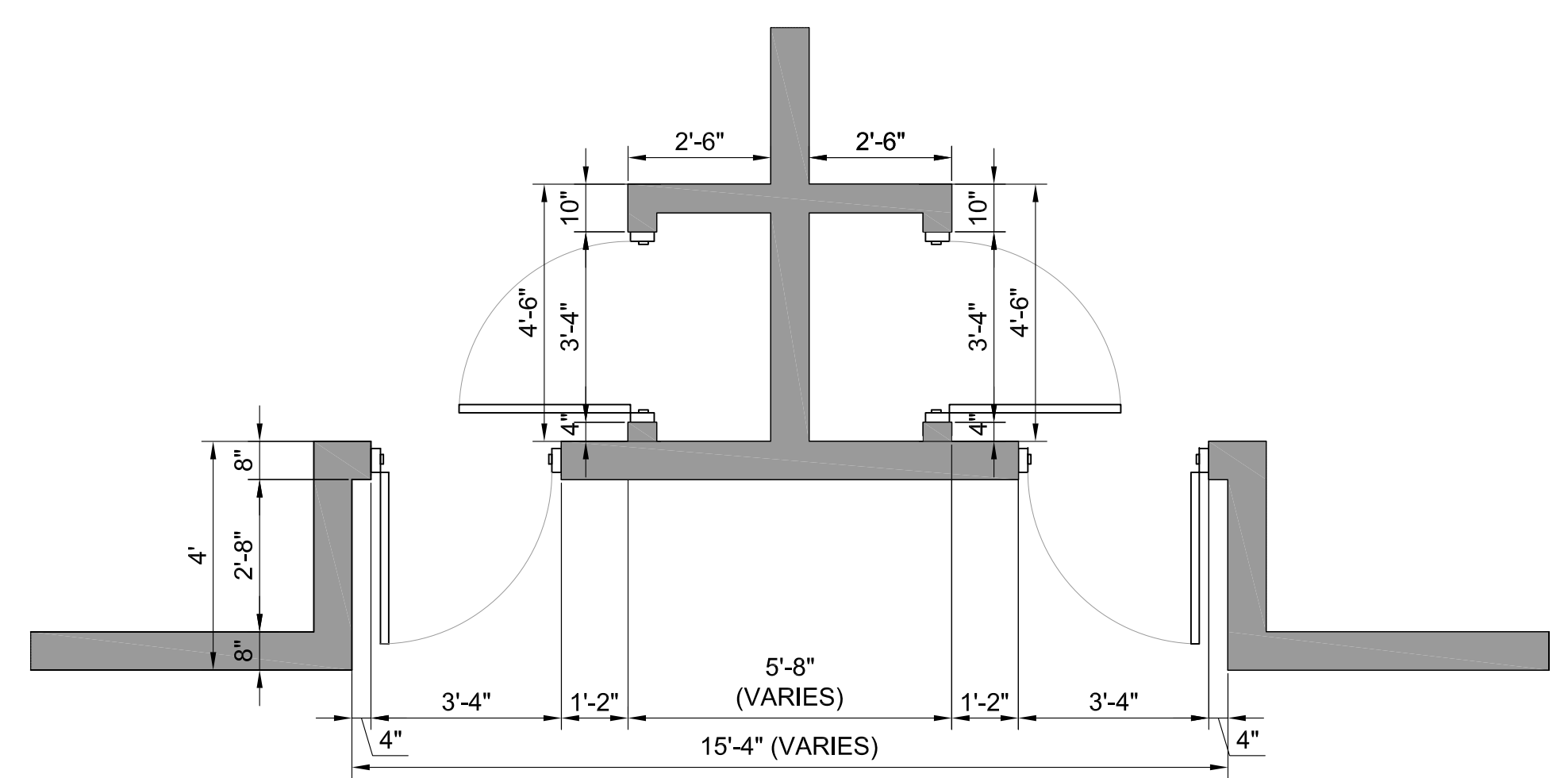
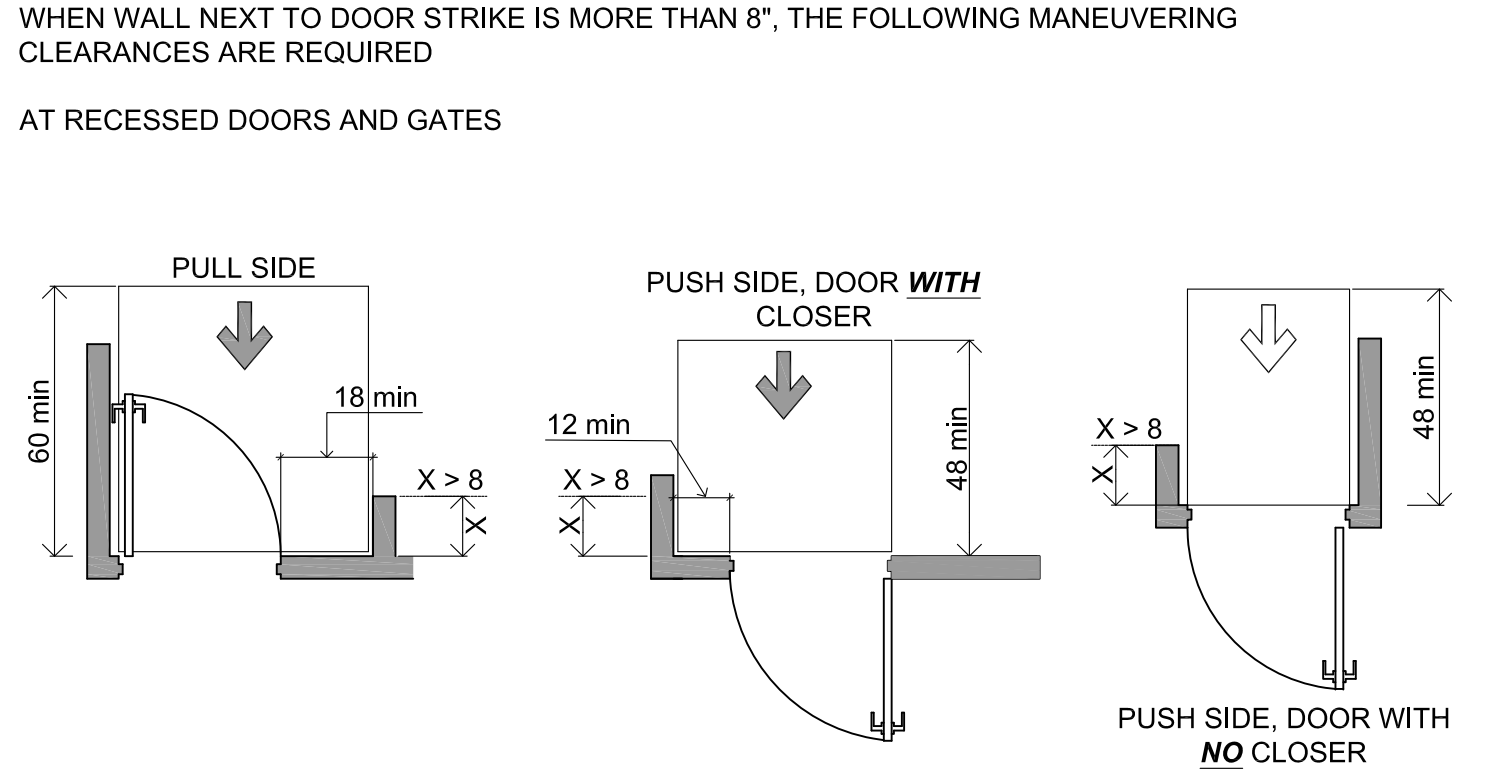
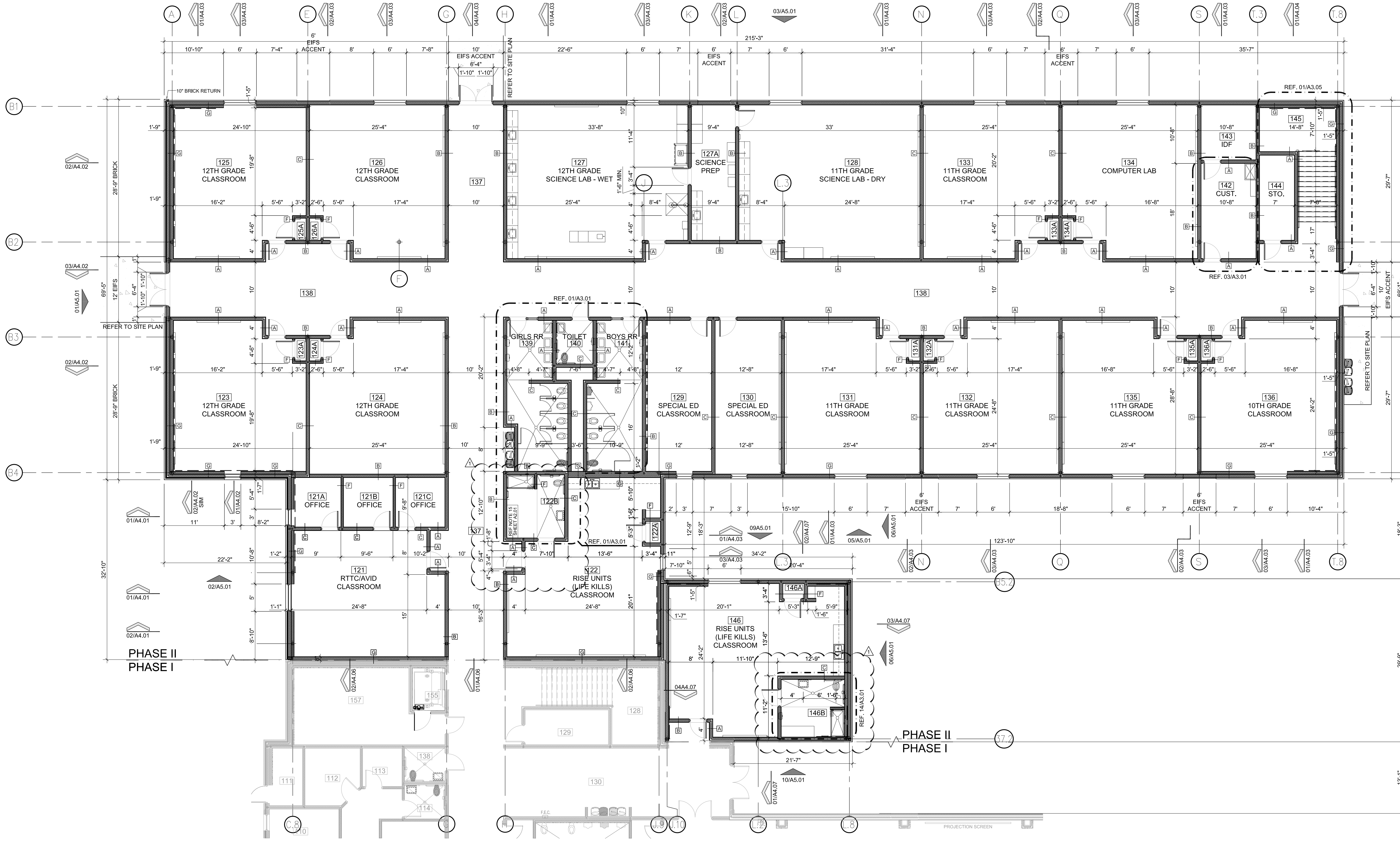


FIGURE 404.2.4.3
 WHEN WALL NEXT TO DOOR STRIKE IS MORE THAN 8", THE FOLLOWING MANEUVERING CLEARANCES ARE REQUIRED



404.2.7 DOOR AND GATE HARDWARE.
 HANDLES, PULLS, LATCHES, LOCKS, AND OTHER OPERABLE PARTS ON DOORS AND GATES SHALL BE 34 INCHES MINIMUM AND 48 INCHES MAXIMUM ABOVE THE FINISH FLOOR

03 ADA DETAILS
 NOT TO SCALE



01 1ST FLOOR FLOOR PLAN
 SCALE: 1/8" = 1'-0"
 GENERAL NOTES:

- REFERENCE SERIES A4.05 FOR TYPICAL INTERIOR WALL SECTIONS NOTED ON THIS PLAN BY THE FOLLOWING DESIGNATION
- PROVIDE DRYWALL CONTROL JOINTS AT ALL STRUCTURAL STEEL COLUMN CONDITIONS AND WALL OPENINGS, REFER TO SHEET A4.05
- PROVIDE TRANSITION STRIPS AT ALL DISSIMILAR FLOOR CONDITIONS
- REFERENCE FIXTURE PLANS SHEET FOR FIXTURE, ACCESSORY REQUIREMENTS AND FLOOR TILE PATTERN LAYOUT
- TYPICAL CORRIDOR WALLS TO BE EXTENDED TO UNDERSIDE OF DECK
- REFERENCE SHEET A3.01 FOR TOILET ENLARGEMENTS
- PROVIDE HORIZONTAL MINI BLINDS AT ALL EXTERIOR WINDOWS TYPICAL. (EXCEPTION HALLWAYS AND STAIRWELLS WINDOWS.)
- ALL EXPOSED DRYWALL CORNERS TO RECEIVE PLASTIC CORNER GUARDS, AS SPECIFIED.
- ALL EXPOSED COLUMNS ARE TO BE FURRED WITH METAL STUDS AND DRYWALL. REFER TO SHEET A3.02 FOR DETAILS.
- PROVIDE DOUBLE 6" METAL STUD PARTITION AT ALL STRUCTURAL BRACING LOCATIONS. REFER TO 15/A3.02 FOR DETAILS AND STRUCTURAL FOR LOCATIONS.
- REFERENCE A3.02 FOR TYPICAL PLAN DETAILS
- PROVIDE MTL. STUD BLOCKING FOR ALL WALL MOUNTED BOARDS & ACCESSORIES.
- PROVIDE WOOD BLOCKING AT ALL CABINETS, PROJECTOR & RAILING LOCATIONS.
- PROVIDE SCHULTER KERDI SHOWER PANS AT ALL LOCATIONS RECEIVING CERAMIC AND QUARRY TILE FLOORING.
- PROVIDE HAUSMANN WALL FOLDING TREATMENT/CHANGING TABLE 72X24X31 HIGH DENSITY FOAM UPHOLSTERED TOP. ITEM #031543 PROVIDE IN WALL BLOCKING AS REQUIRED. INSTALL PER MFG. INSTRUCTIONS.



119 W. Van Buren Ave. Ste. 101
Harlingen, TX 78550
Off: (956) 230-3435
Fax: (956) 720-0830
www.ethoseng.net

July 12, 2019
IDEA Owassa College Prep Phase II



ADDENDUM NO. 2

A. PURPOSE AND INTENT

This addendum is issued for the purpose of modifying the plans and specifications for the project referenced above.

This addendum shall become part of the contract and all contractors shall be bound by its content. All aspects of the specifications and drawings not covered herein shall remain the same.

The General Conditions and the Special Conditions of the specifications shall govern all parts of the work and apply in full force to this addendum.

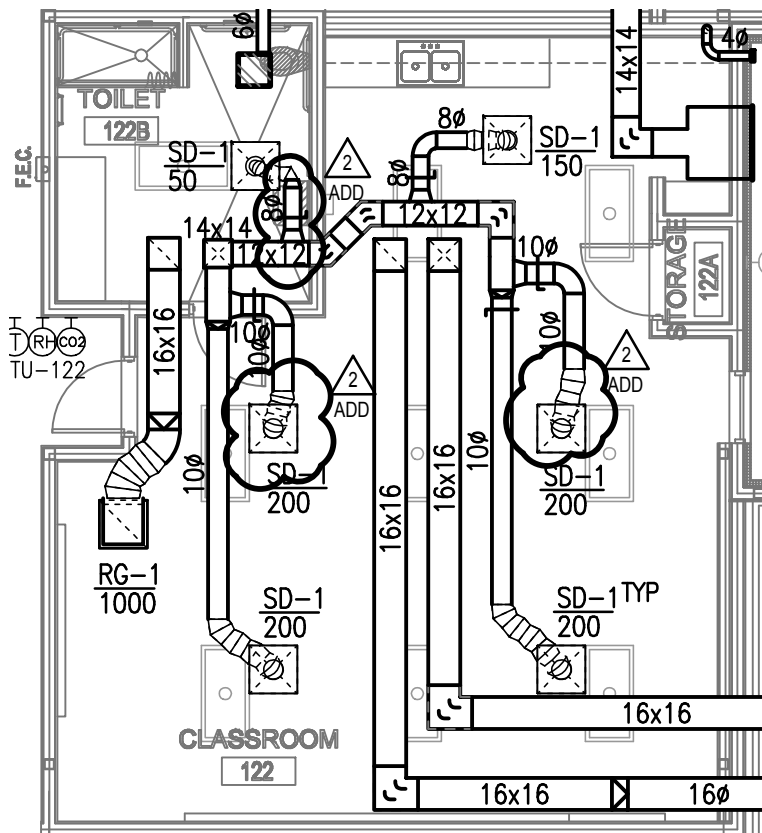
I. Drawings:

- 1) Sheet M3.01:
 - a) Revised Mechanical Plan. See attached sheet M3.01a.
- 2) Sheet E3.01:
 - a) Revised Lighting Plan. See attached sheet E3.01a.
- 3) Sheet E4.01:
 - a) Revised Electrical Plan. See attached sheet E4.01a.
- 4) Sheet E9.01:
 - a) Revised Details 01 and 03. See attached sheet.
- 5) Sheet P2.01:
 - a) Revised Plumbing Plan. See attached sheet P2.01a.

IDEA OWASSA CAMPUS PHASE II

PHARR

TEXAS



01 MECHANICAL PLAN (FIRST FLOOR)

SCALE : 1/8" = 1' = 0"



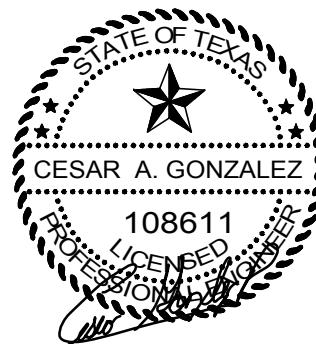
NORTH

NO: REVISION: BY:

2
ADD 2019-07-12 ETHOS



TEXAS REGISTERED
ENGINEERING FIRM
F-15998



DATE: 06/13/19

CHECKED BY: R.P.

DRAWN BY:

PROJECT NO.: 18V36

CAD FILE: -

SHEET:


M3.01a

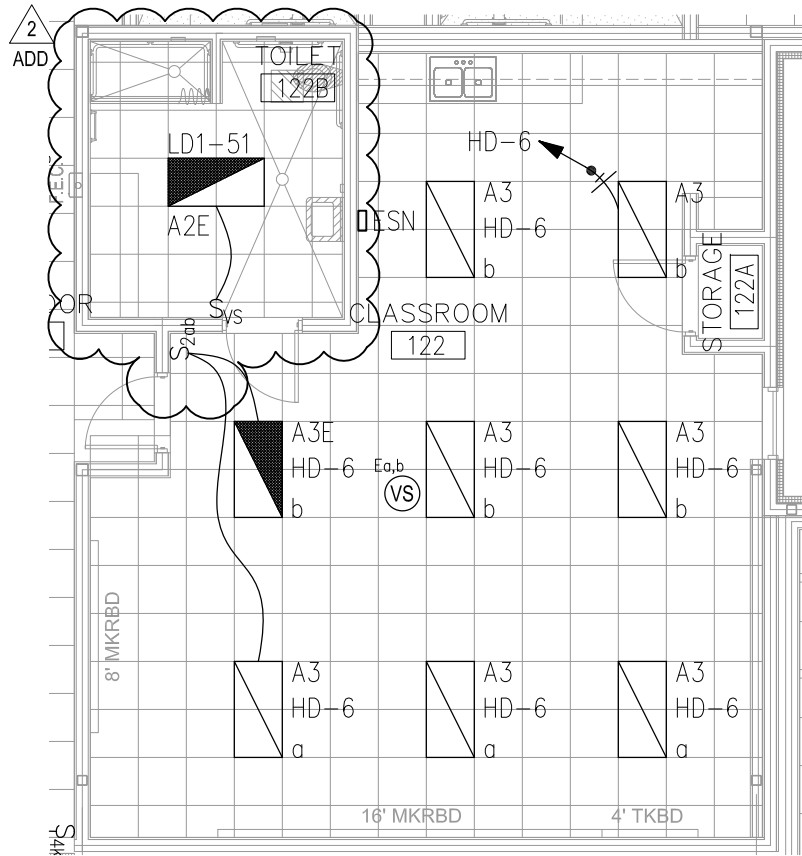
IDEA OWASSA CAMPUS PHASE II

PHARR

TEXAS

NO: REVISION: BY:

 2019-07-12 ETHOS



01 LIGHTING PLAN (FIRST FLOOR)

SCALE : 1/8" = 1'-0"



NORTH

DATE: 06/13/19

CHECKED BY: R.P.

DRAWN BY: J.M.

PROJECT NO.: 18V36

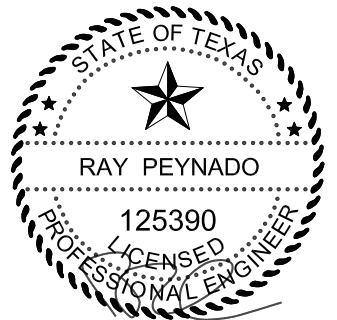
CAD FILE: -

SHEET:

E3.01a



TEXAS REGISTERED
ENGINEERING FIRM
F-15998



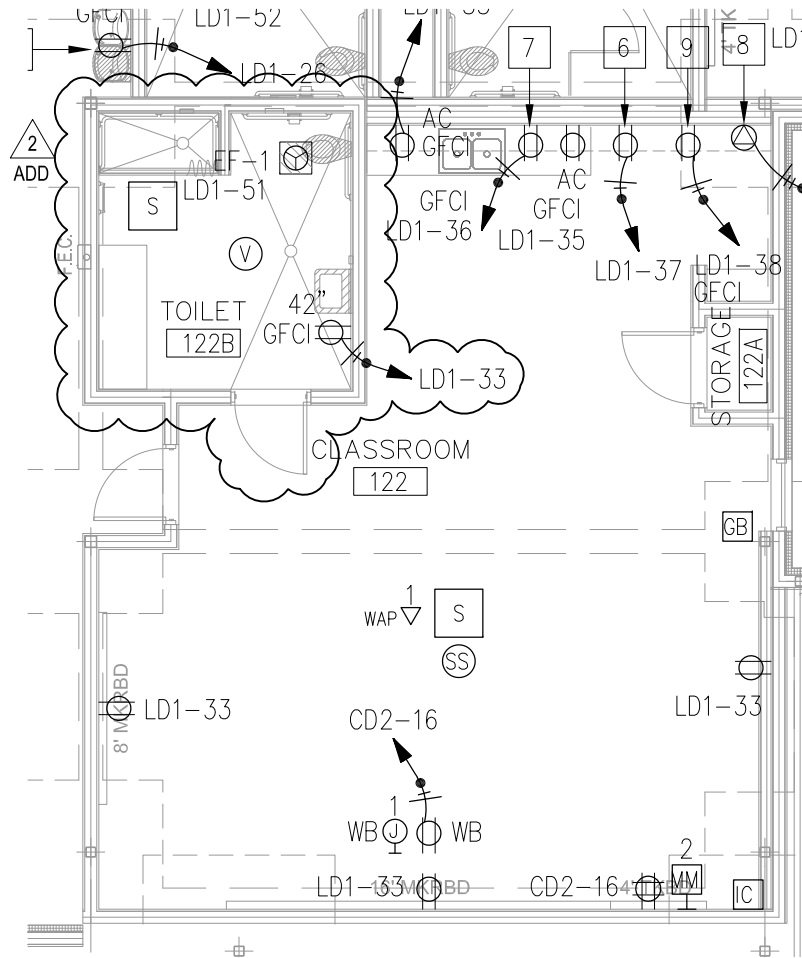
IDEA OWASSA CAMPUS PHASE II

PHARR

TEXAS

NO: REVISION: BY:

2
ADD 2019-07-12 ETHOS



01 ELECTRICAL PLAN (FIRST FLOOR)

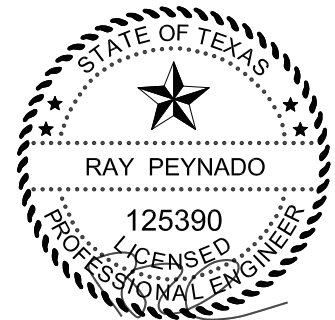
SCALE : 1/8" = 1'-0"



NORTH



TEXAS REGISTERED
ENGINEERING FIRM
F-15998



DATE: 06/13/19

CHECKED BY: R.P.

DRAWN BY: J.M.

PROJECT NO.: 18V36

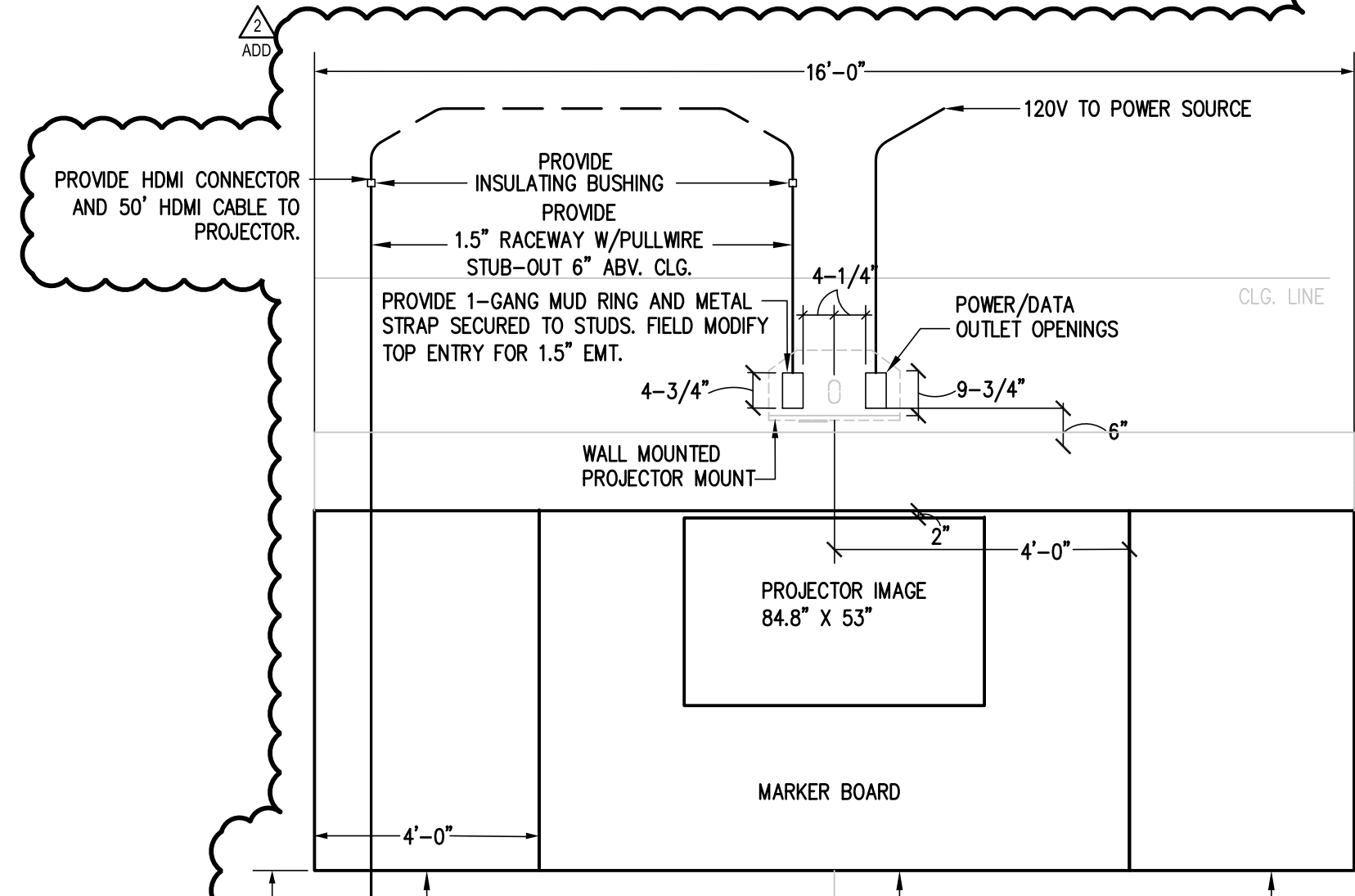
CAD FILE: -

SHEET:

E4.01a

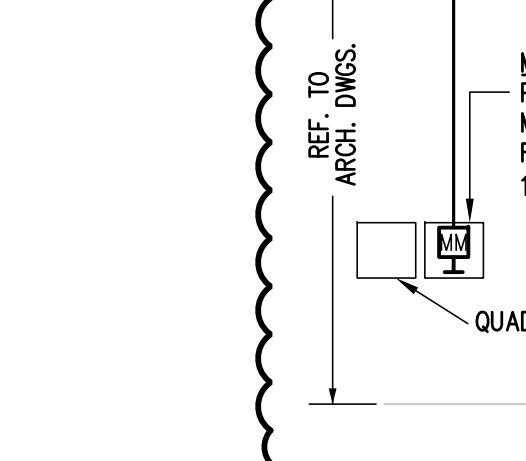
NOTES:

1. INSTALL ALL ROUGH-INS IN STRICT ACCORDANCE WITH MANUFACTURER PUBLISHED TEMPLATES. PROVIDE MOCK-UP FOR OWNER REPRESENTATIVE APPROVAL.
2. TEMPLATE TO BE PROVIDED BY PROJECTOR MANUFACTURER/OWNER. COORDINATE WITH OWNER PRIOR TO ANY ROUGH-IN.
3. ROUGH-INS ARE LOCATED ON LEFT OR RIGHT HAND SIDE OF MARKER BOARD. REFER TO ELECTRICAL DRAWINGS FOR LOCATIONS.
4. PROVIDE A DATA CONNECTOR AND CAT6 WIRING AT PROJECTOR MOUNT.

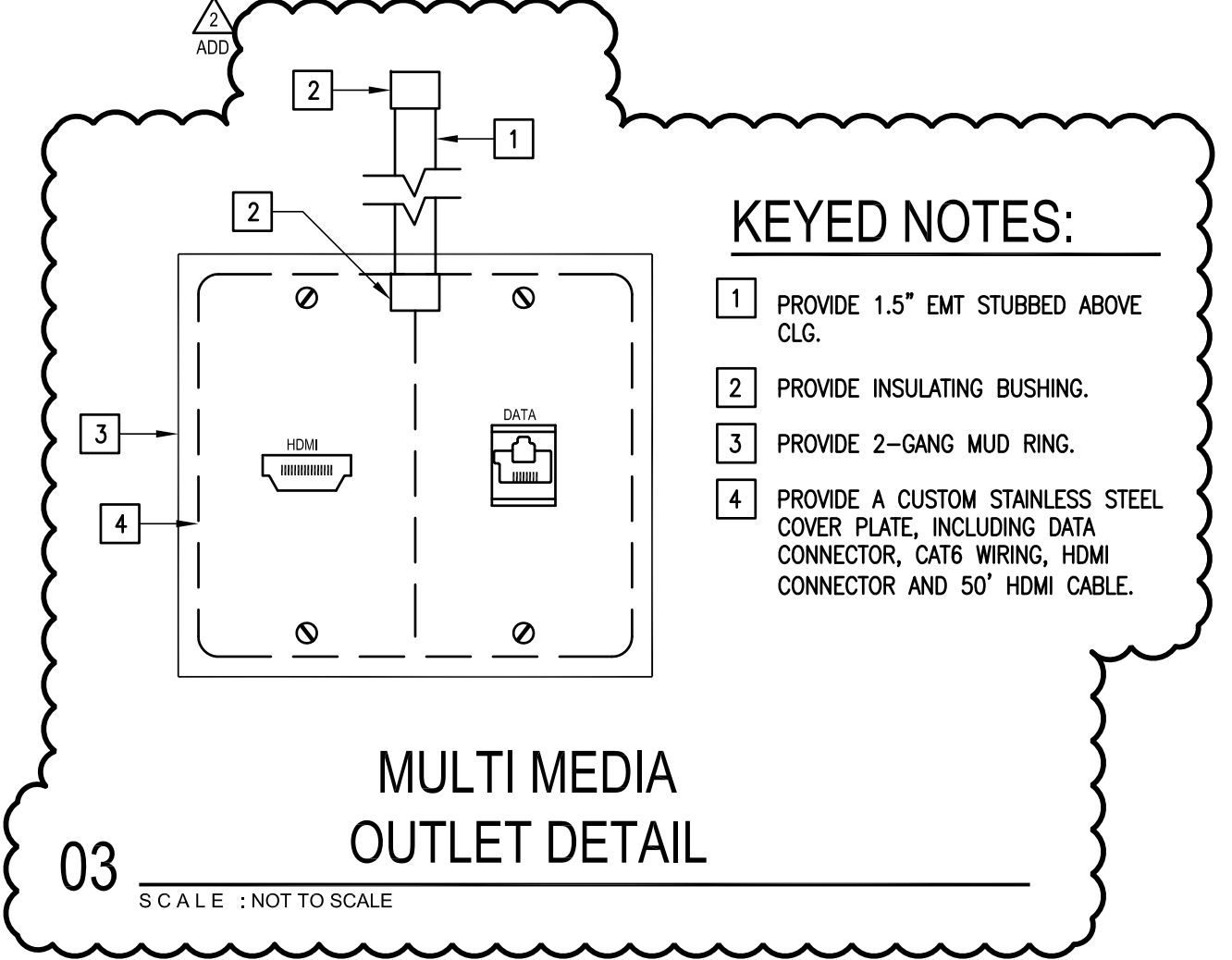


NOTES:

1. INSTALL ALL ROUGH-INS IN STRICT ACCORDANCE WITH MANUFACTURER PUBLISHED TEMPLATES. PROVIDE MOCK-UP FOR OWNER REPRESENTATIVE APPROVAL.
2. CONNECTORS, CABLING AND OUTLET PROVIDED BY OWNER.
3. STUB-UP RACEWAYS 6\"/>



02 LIGHTING LEGEND DETAIL
SCALE: NOT TO SCALE



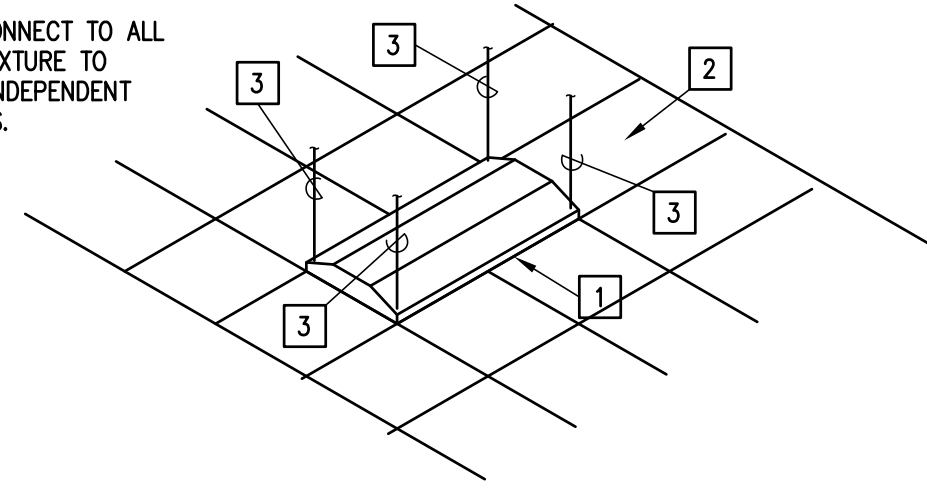
KEYED NOTES:

1. PROVIDE 1.5\"/>

03 MULTI MEDIA OUTLET DETAIL
SCALE: NOT TO SCALE

KEYED NOTES:

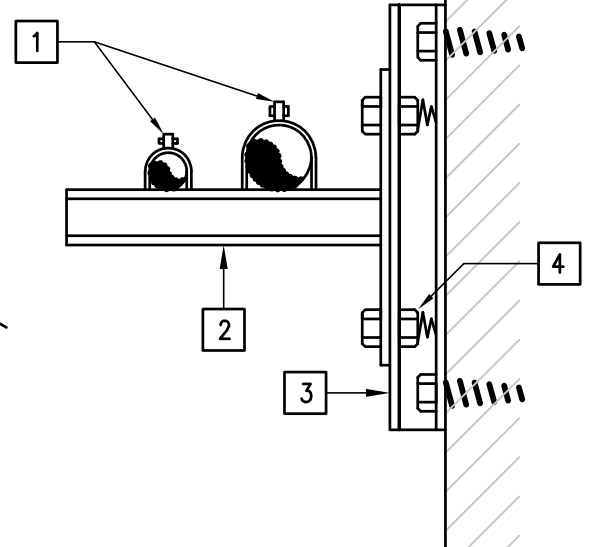
1. PROVIDE 2'x 4' LAY-IN LED FIXTURE SUSPENDED CEILING
2. PROVIDE THE WIRE, CONNECT TO ALL FOUR CORNERS OF FIXTURE TO STRUCTURE ABOVE, INDEPENDENT OF CEILING SUPPORTS.



04 TYPICAL LAY-IN FIXTURE SUPPORT
SCALE: NOT TO SCALE

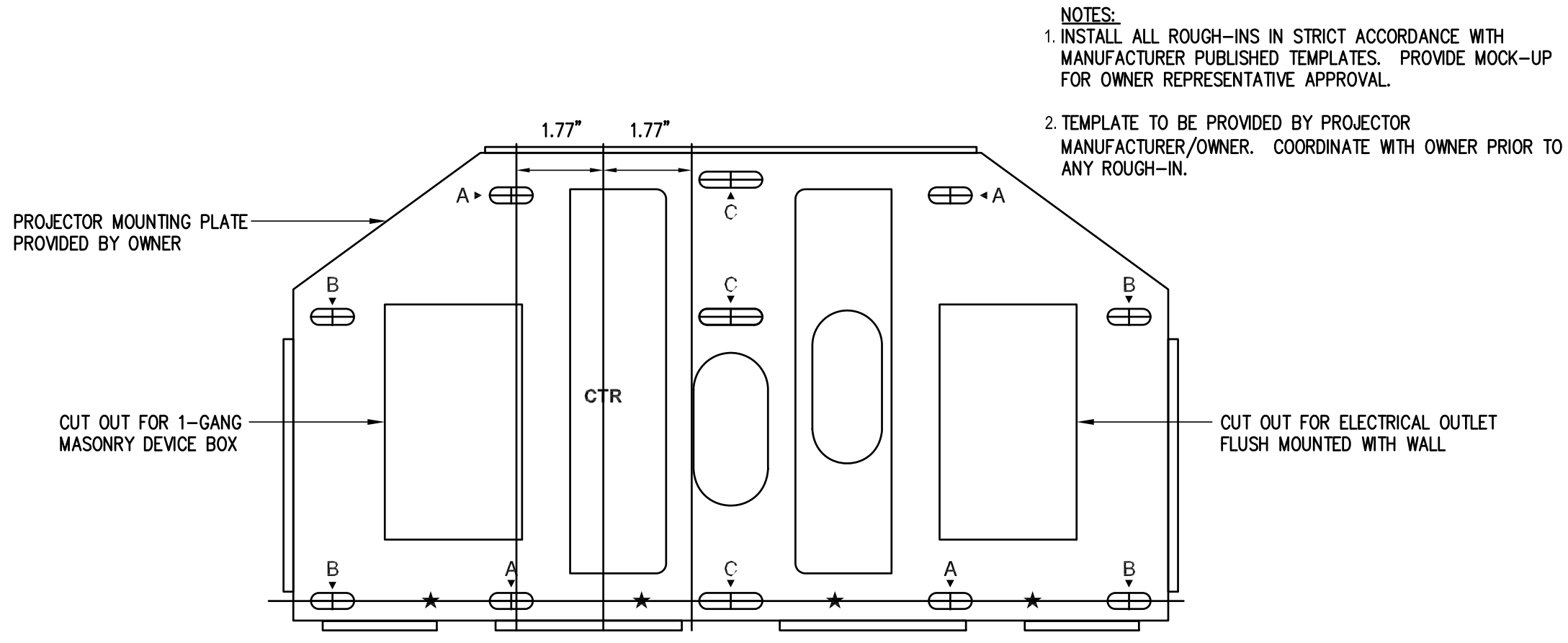
KEYED NOTES:

1. PROVIDE CONDUIT CLAMPS.
2. PROVIDE GALVANIZED UNISTRUT WALL BRACKET.
3. PROVIDE RAMSET OR BOLT GALVANIZED UNISTRUT TO WALL.
4. PROVIDE SELF HOLDING CLAMPING NUT WITH SPRING.

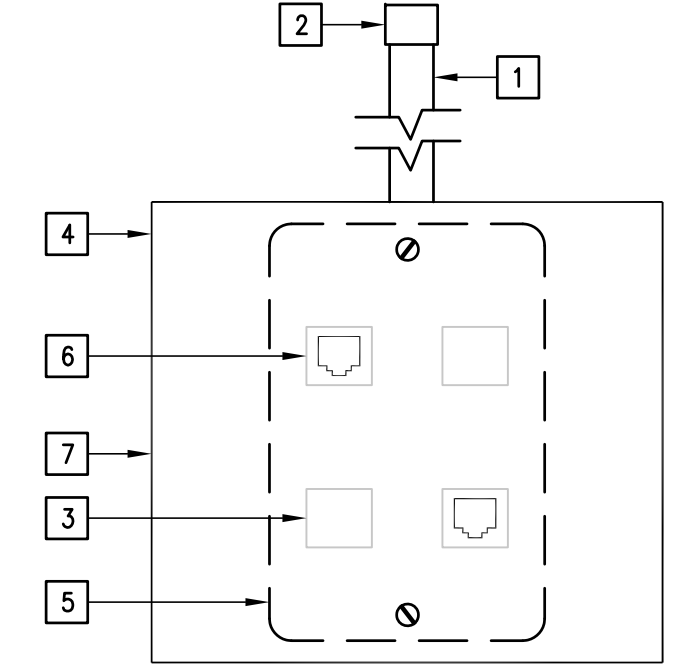


05 RACEWAY RUNS SUPPORT DETAIL
SCALE: NOT TO SCALE

01 TYPICAL CLASSROOM WALL PROJECTOR ROUGH-IN
SCALE: NOT TO SCALE



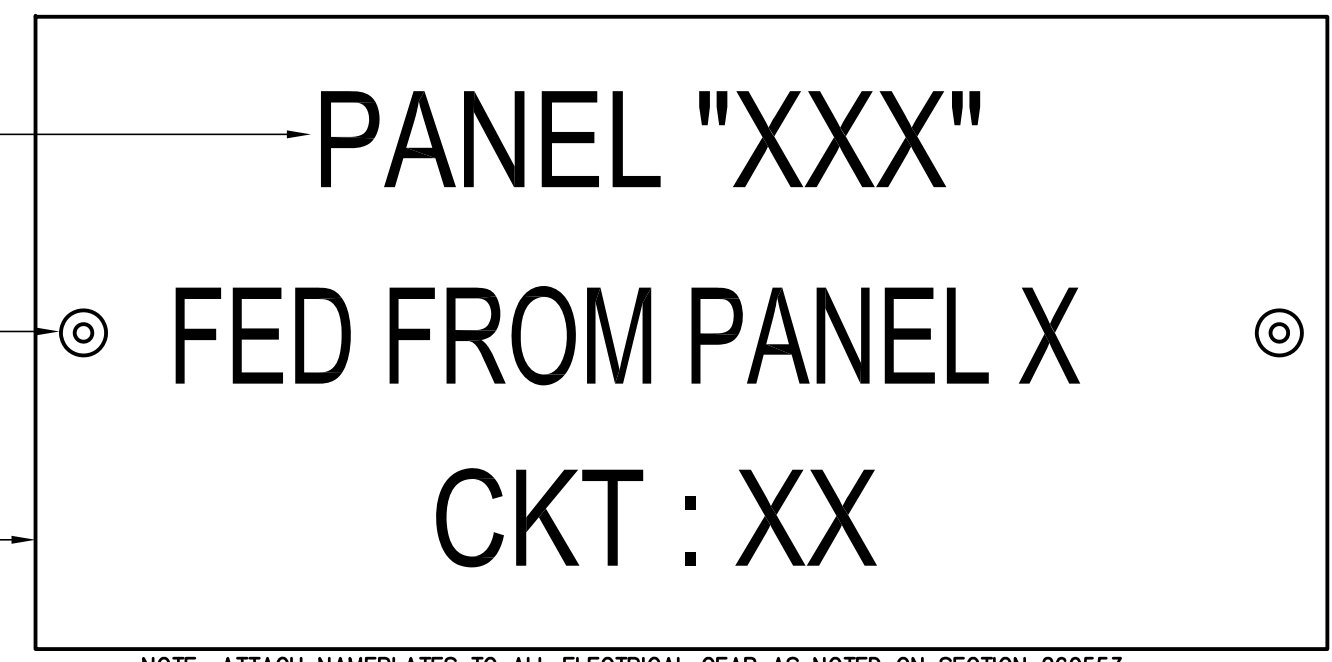
06 WALL PROJECTOR MOUNTING BRACKET DETAIL
SCALE: NOT TO SCALE



KEYED NOTES:

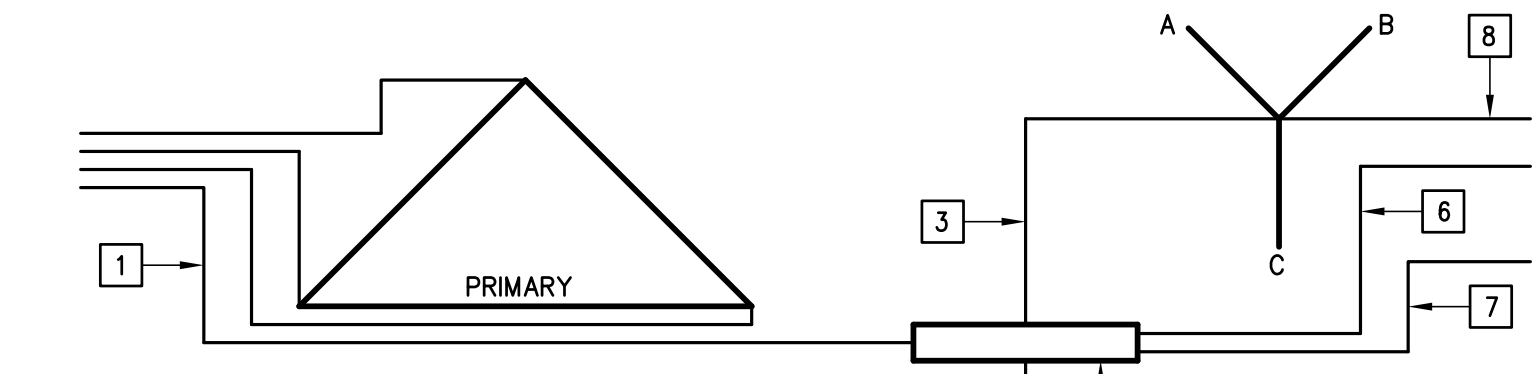
1. PROVIDE 1\"/>

07 TYPICAL DATA/TELEPHONE OUTLET DETAIL
SCALE: NOT TO SCALE



NOTE: ATTACH NAMEPLATES TO ALL ELECTRICAL GEAR AS NOTED ON SECTION 260553.

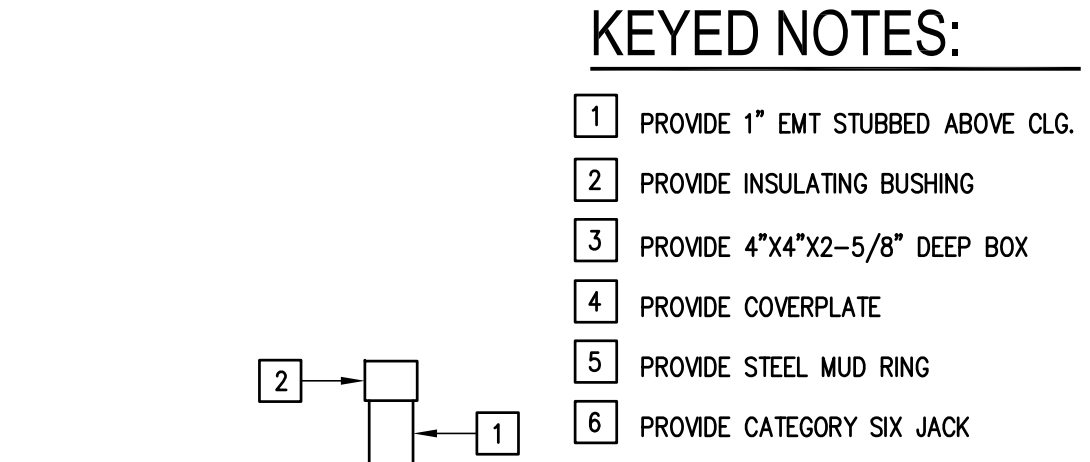
08 EQUIPMENT IDENTIFICATION LABEL DETAIL
SCALE: NOT TO SCALE



KEYED NOTES:

1. EQUIPMENT GROUNDING CONDUCTOR
2. GROUNDING-ELECTRODE CONDUCTOR SIZE PER NEC 250-30(A)(2)
3. BOND JUMPER FROM XO TO GROUND BAR, SIZE PER NEC 250-30(A)(1)
4. GROUND BAR MOUNTED IN TRANSFORMER ENCLOSURE - BOND TO FRAME.
5. GROUNDING ELECTRODES PER NEC 250-30, (A)(3) REBAR FOUNDATION.
6. GREEN/YELLOW IG GROUNDING CONDUCTOR, SIZE PER NEC 250-146, 250-146(D)
7. GREEN EQUIPMENT GROUNDING CONDUCTOR, SIZE PER NEC 250-122.
8. OUTPUT NEUTRAL - 200% SIZE FOR NONLINEAR LOADS.

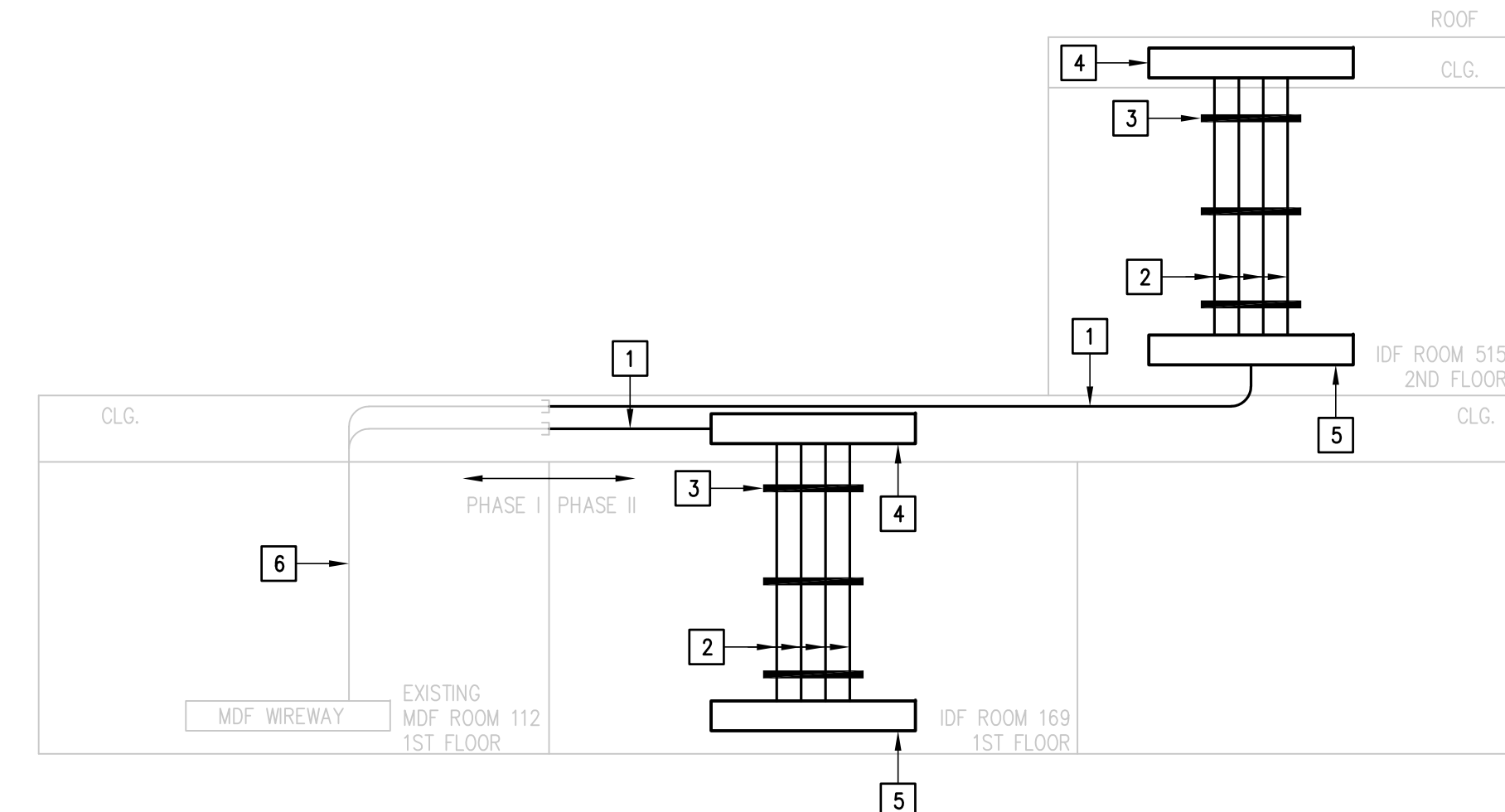
09 TRANSFORMER WIRING DIAGRAM DETAIL
SCALE: NOT TO SCALE



KEYED NOTES:

1. PROVIDE 1\"/>

10 TYPICAL DATA OUTLET DETAIL
SCALE: NOT TO SCALE



11 SPECIAL SYSTEMS RACEWAYS WIREWAY DETAIL
SCALE: NOT TO SCALE

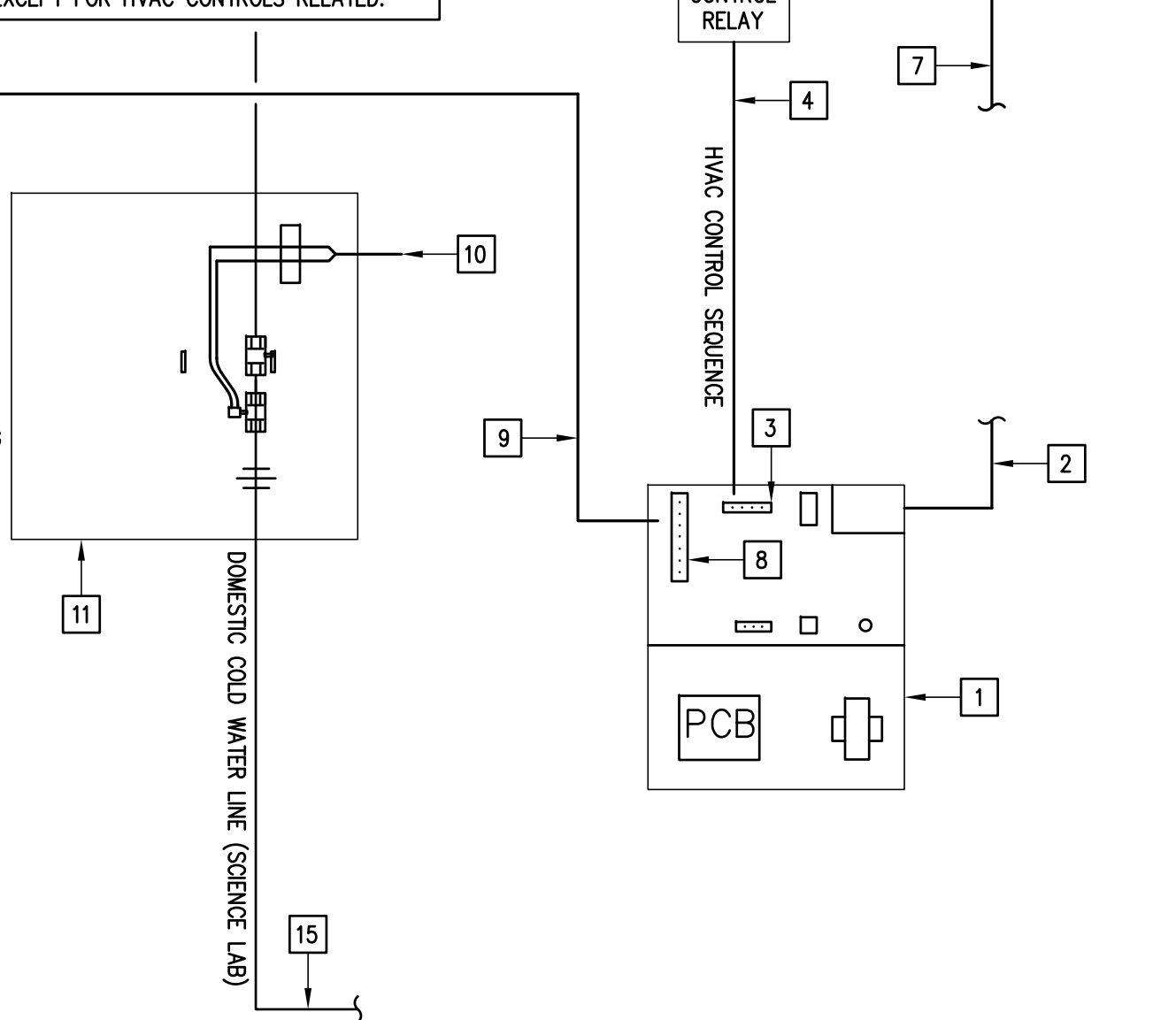
KEYED NOTES:

1. PROVIDE 4\"/>

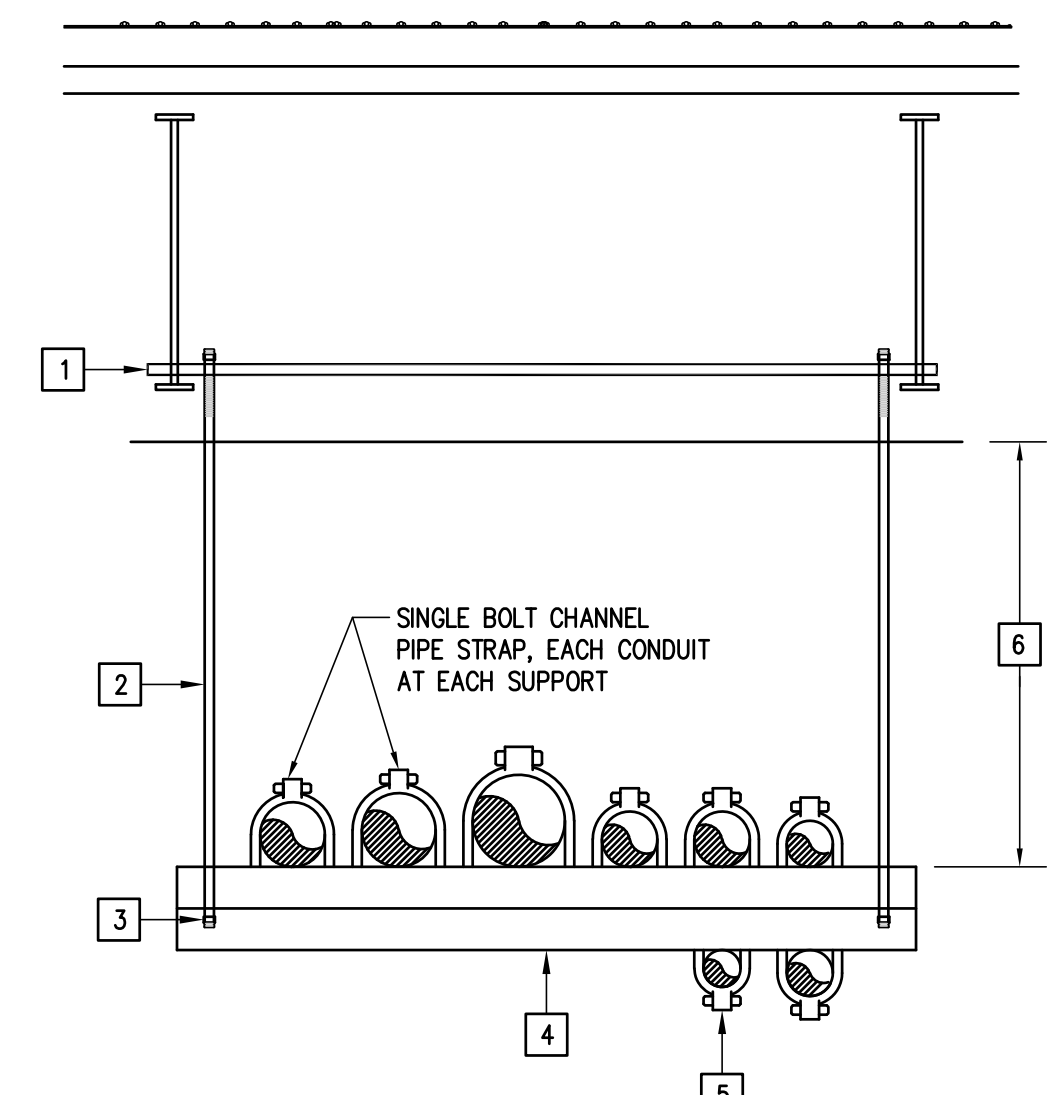
KEYED NOTES:

1. PROVIDE ISMET UTILITY CONTROLLER WITH PANIC BUTTON (PURGE), ADDITIONAL LOW SPEED SWITCH, FIELD CONFIGURE CONTROLS SYSTEM.
2. PROVIDE 120VAC POWER SUPPLY WIRING IN CONDUIT MAKE CONNECTION @ J-BOX.
3. PROVIDE ENERGY MANAGEMENT CONTROL CONTACTOR TO MAKE CONNECTIONS TO TERMINAL 1.
4. PROVIDE 1/2\"/>

NOTE: ALL WIRING BY ELECTRICAL CONTRACTOR EXCEPT FOR HVAC CONTROLS RELATED.



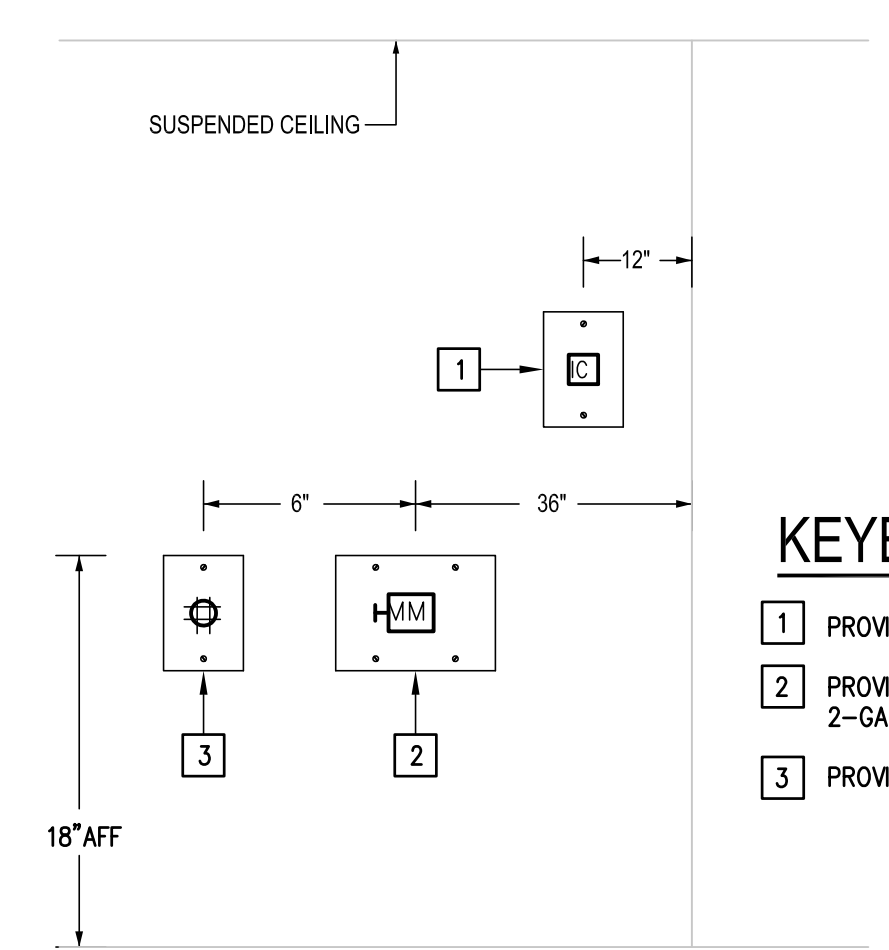
15 TYPICAL SCIENCE LAB UTILITY CONTROLS DETAIL
SCALE: NOT TO SCALE



KEYED NOTES:

1. PROVIDE UNISTRUT STRUCTURAL CHANNEL SECURED TO JOIST AT BOTH ENDS.
2. PROVIDE 1/2\"/>

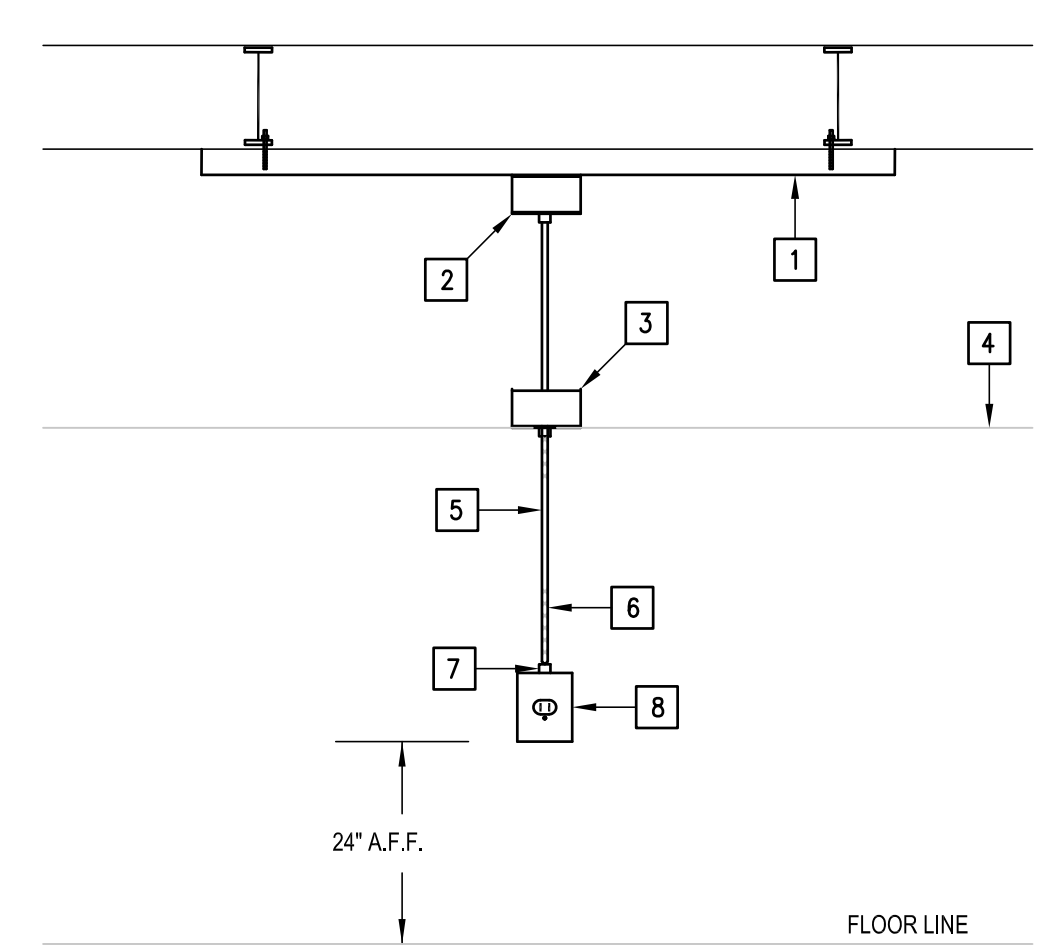
12 HORIZONTAL RACEWAYS SUPPORT DETAIL
SCALE: NOT TO SCALE



KEYED NOTES:

1. PROVIDE INTERCOM BUTTON.
2. PROVIDE MULTI MEDIA OUTLET AND 2-GANG MUD RING.
3. PROVIDE QUADPLEX RECEPTACLE.

13 TYPICAL TEACHER'S WORKSTATION DETAIL
SCALE: NOT TO SCALE



KEYED NOTES:

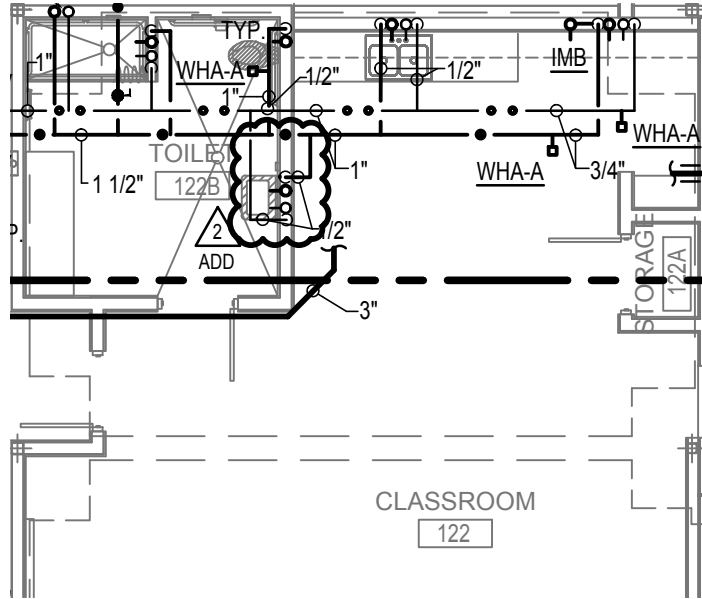
1. PROVIDE UNISTRUT BOLTED TO BUILDING STRUCTURE STEEL.
2. PROVIDE J-BOX ATTACHED TO UNISTRUT.
3. PROVIDE J-BOX SECURE TO BUILDING STRUCTURE STEEL.
4. SUSPENDED CEILING LINE.
5. PROVIDE \"so\" CORD.
6. PROVIDE STAINLESS STEEL MESH BY KELLEMS AT BOTH ENDS.
7. PROVIDE ALUMINUM BODY STRAIGHT MALE THREADED CONNECTOR BY KELLEMS.
8. PROVIDE CAST ALUMINUM BOX - 2 GANG.

14 PENDANT MOUNTED IDF/MDF ROOM RECEPTACLE DETAIL
SCALE: NONE

IDEA OWASSA CAMPUS PHASE II

PHARR

TEXAS

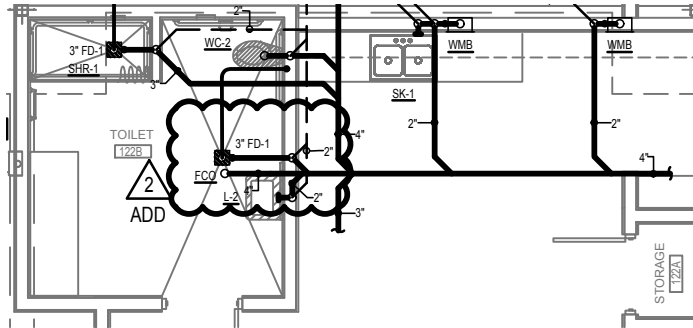


01 PLUMBING PLAN (FIRST FLOOR)

SCALE : 1/8" = 1'-0"



NORTH



02 WASTE & VENT PLAN (FIRST FLOOR)

SCALE : 1/4" = 1'-0"



NORTH

NO: REVISION: BY:

2 2019-07-12 ETHOS
ADD



TEXAS REGISTERED
ENGINEERING FIRM
F-15998



DATE: 06/13/19

CHECKED BY: R.P.

DRAWN BY:

PROJECT NO.: 18V36

CAD FILE: -

SHEET:

P2.01a