



1801 South 2nd Street, Ste. 330 McAllen, TX 78503

Addendum No. 7

DATE: Wednesday, June 19, 2019

PROJECT: Tropical Texas Behavioral Health-Ambulatory Service Facility

PROJECT NO: 1591801

LOCATION: 871 Old Alice Road, Brownsville, Texas 78520

FROM: Laura N. Warren, The Warren Group Architects, Inc.

The following revisions and clarifications shall be considered part of the record contract documents dated May 17, 2019 for the above referenced project and included in the contract amount. All general notes and specifications shall apply to this addendum. Where provisions of the following supplementary data differ from those of the original Contract Documents, this Addendum shall govern and take precedence.

The following scope adjustments have been made. Please adjust bids with the following noted changes:

Specifications

- Item No. 1:** Refer to Project Manual Specification Section 10 21 13 Toilet Compartments dated 05/17/2019. **Clarification: Scranton Hiny Hiders Solid Plastic partition in color Sandcastle to be used as per sheet A6.11. G.C. to ensure product to be Class A Rated.**
- Item No. 2:** Refer to Project Manual Specification Section 10 28 13 Toilet Accessories. **Clarification: Quarter dome mirror to be in Restroom 111 only.**
- Item No. 3:** Refer to Project Document 00 11 16 Invitation to Submit (CSP) Competitive Sealed Proposals Part 1.1 E. **Clarification: For square footage of project.**

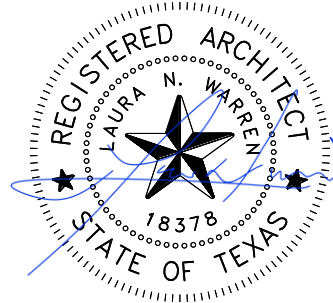
Drawings

- Item No. 4:** Refer to Construction Documents Sheet A4.11 and A4.12 dated 05/17/2019. **Clarification: Restrooms 186 and 190 Paper Towel Dispenser/Disposals are to be used and not electric hand dryers. Sanitary napkins/tampons dispensers and diaper changing stations are also provided. Refer attached 30"x42" Sheet A4.11 ADD7 dated 06/19/2019. Insert sheet.**
- Item No. 5:** Refer to Construction Documents Sheet E1.02 dated 05/17/2019. **Clarification from MEP Solutions: For Room 158, TV shall be provided instead of screen.**

ISSUED BY:



Laura N. Warren, AIA/Principal
The Warren Group Architects, Inc.



Attachments:

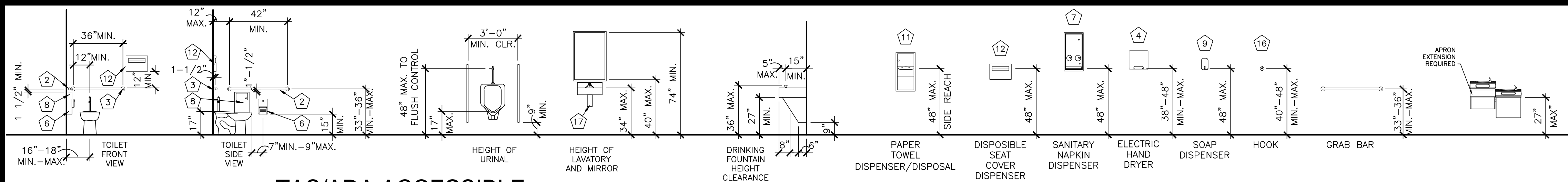
PDF Format – 30"x42" A4.11 ADD 7 dated 06/19/2019.

PDF Format – 30"x42" A4.12 ADD 7 dated 06/19/2019.

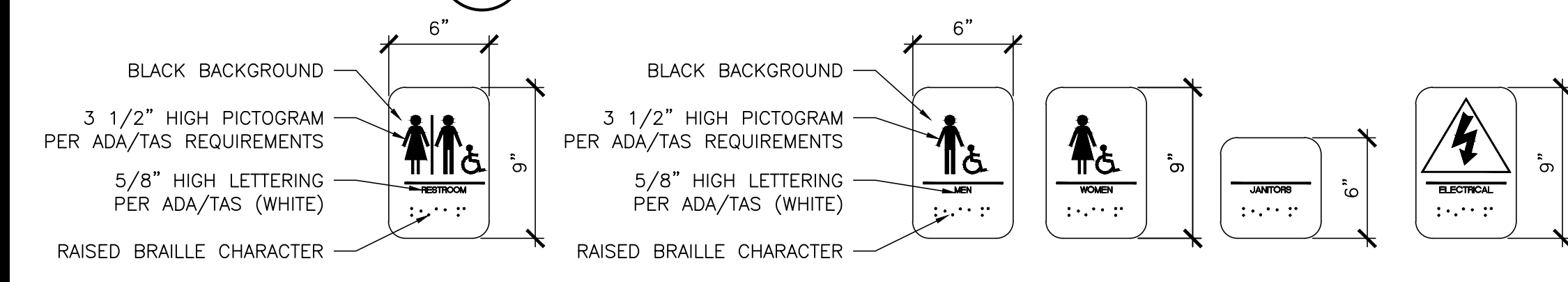
Distribution:

Bidding Vendors

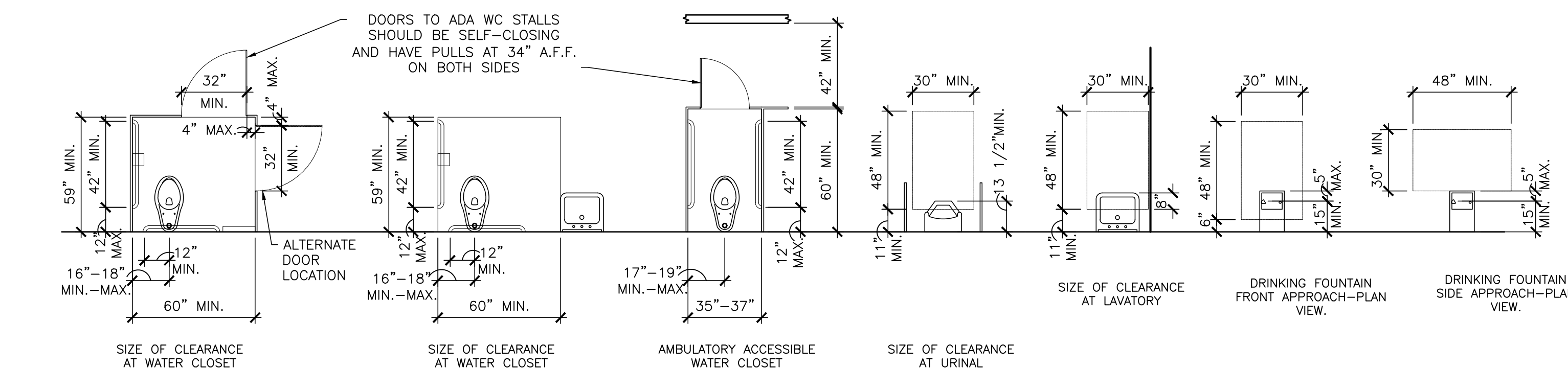
Shared File



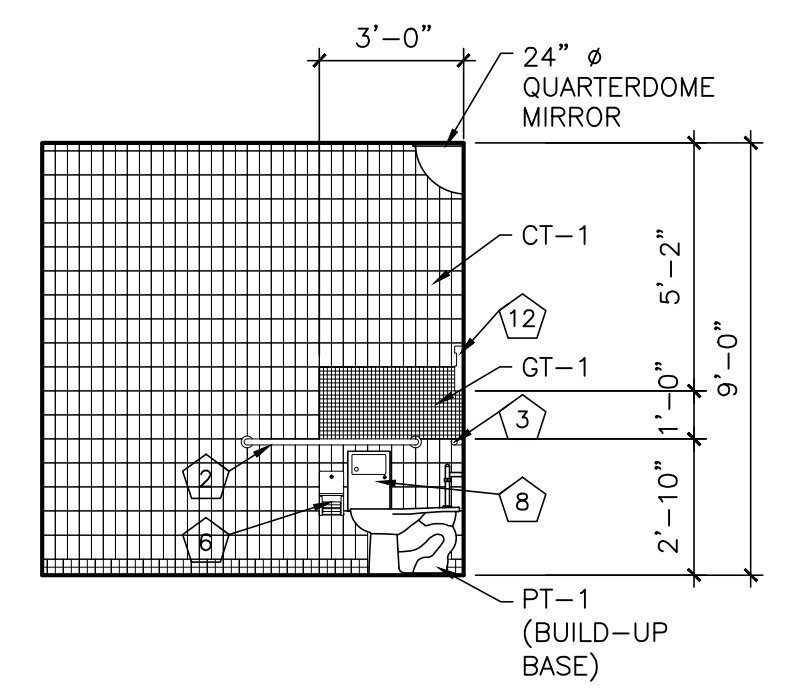
18 TAS/ADA ACCESSIBLE MOUNTING HEIGHT
SCALE: 1/4"=1'-0"



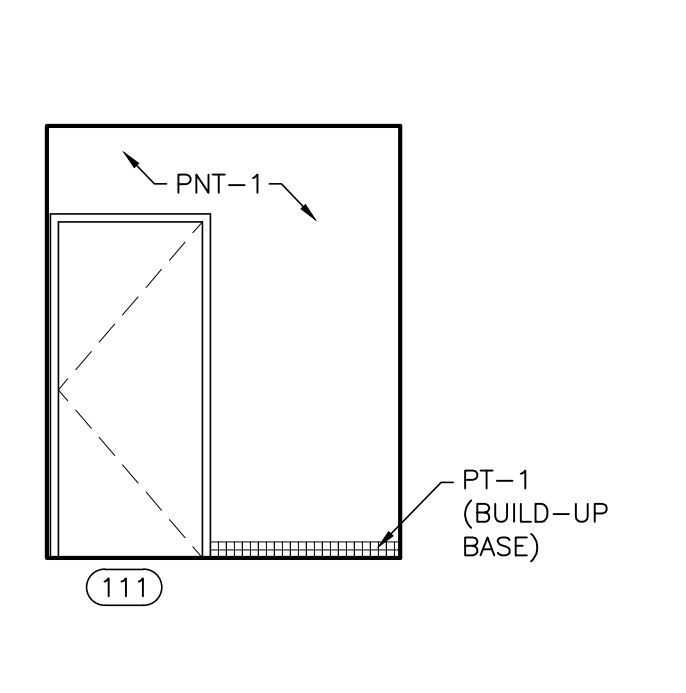
17 TAS/ADA ACCESSIBLE SIGNAGE SCHEDULE
SCALE: 1/2"=1'-0"



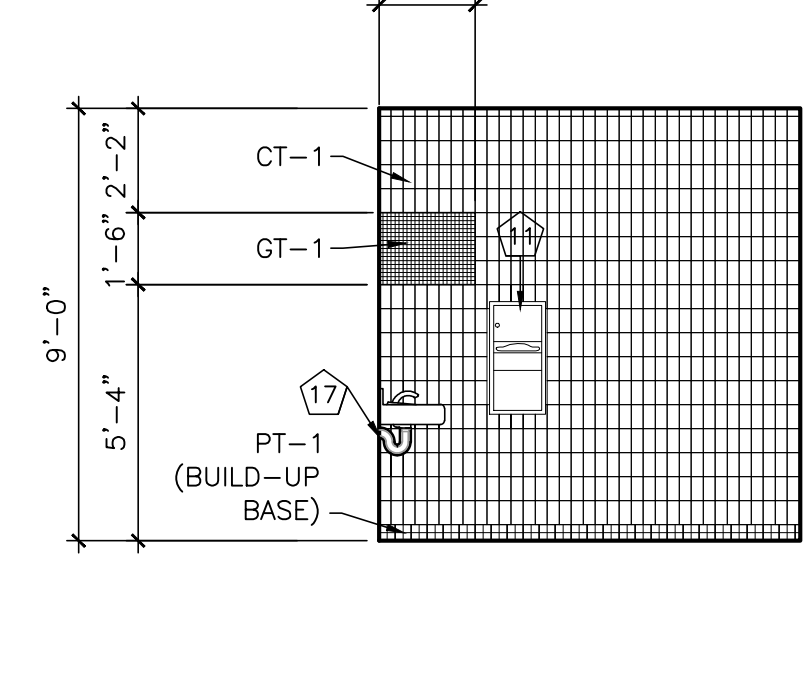
16 TAS/ADA ACCESSIBLE FIXTURE CLEARANCE
SCALE: 1/4"=1'-0"



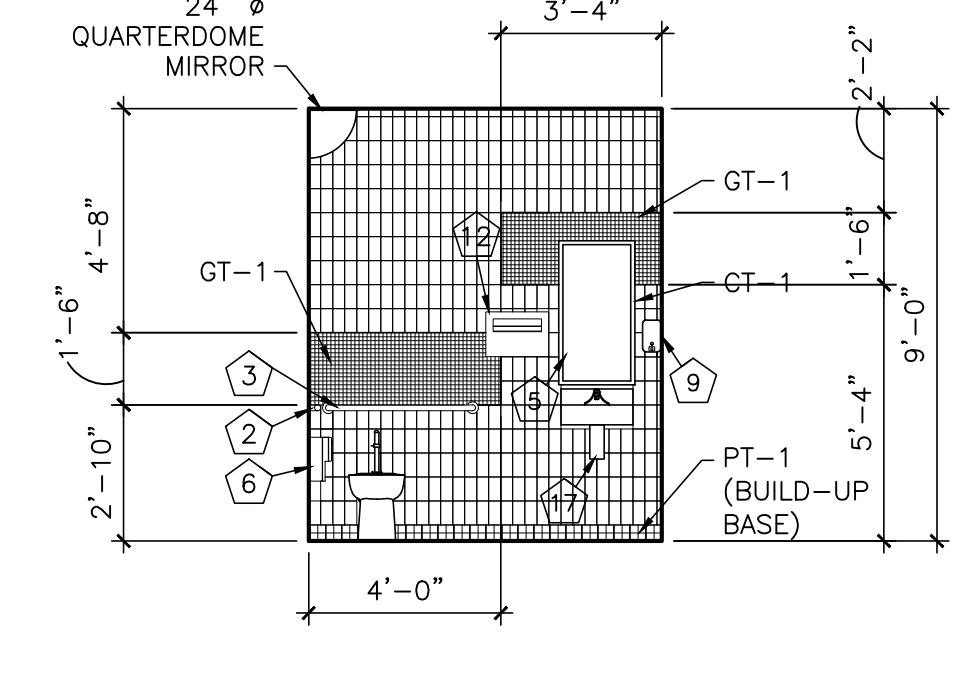
15 WEST ELEVATION RR 111
SCALE: 1/4"=1'-0"



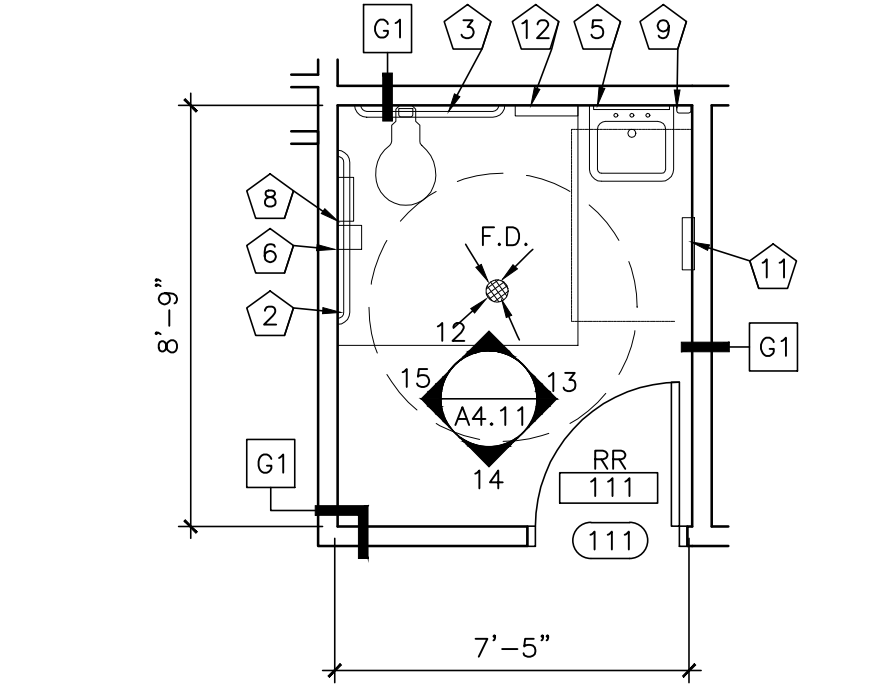
14 SOUTH ELEVATION RR 111
SCALE: 1/4"=1'-0"



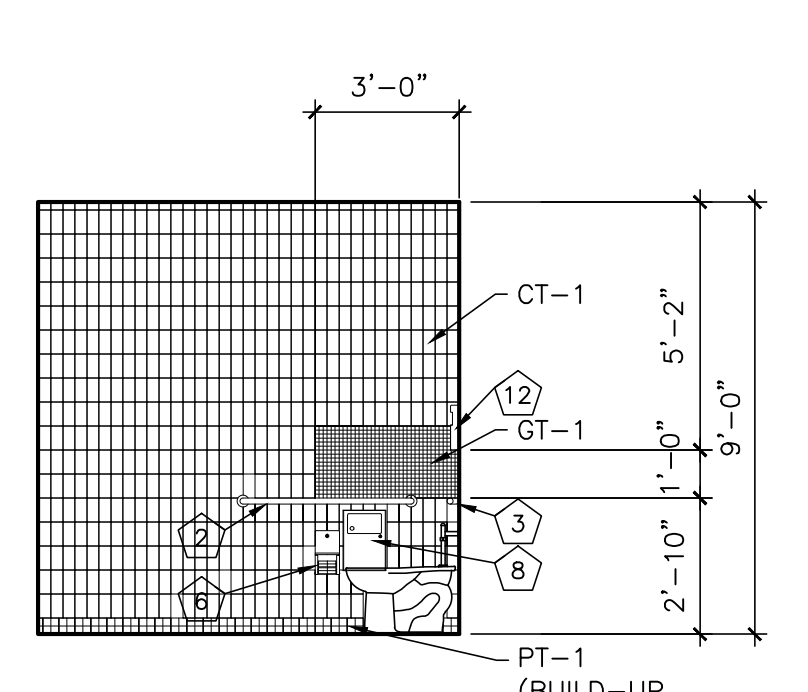
13 EAST ELEVATION RR 111
SCALE: 1/4"=1'-0"



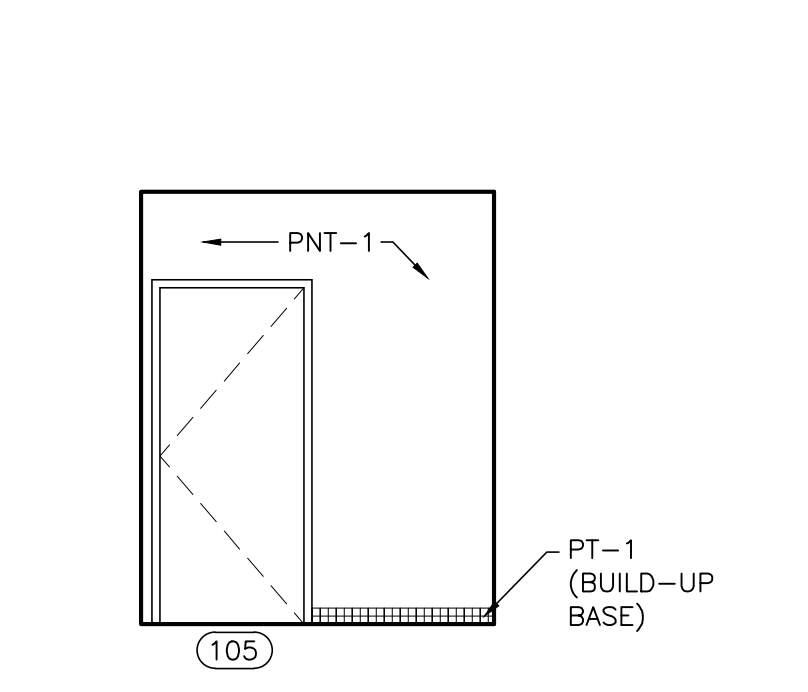
12 NORTH ELEVATION RR 111
SCALE: 1/4"=1'-0"



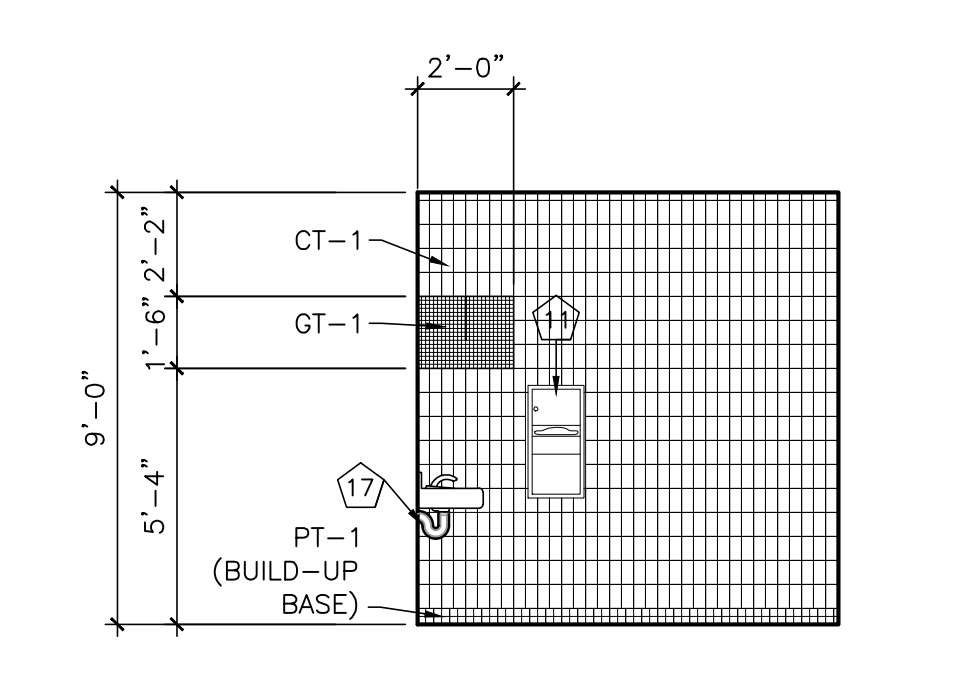
11 ENLARGED PLAN RR 111
SCALE: 1/4"=1'-0"



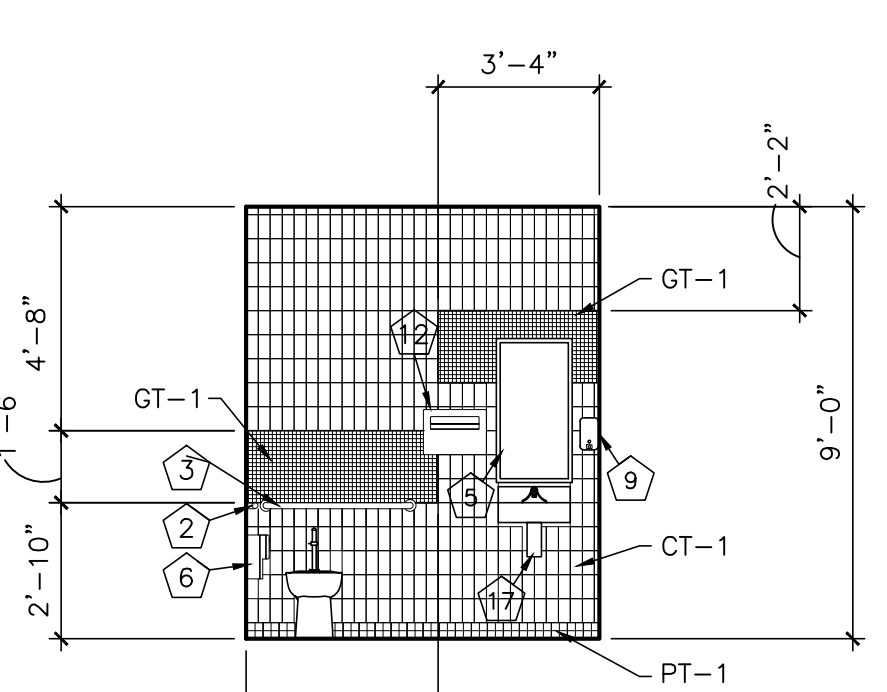
10 WEST ELEVATION RR 105
SCALE: 1/4"=1'-0"



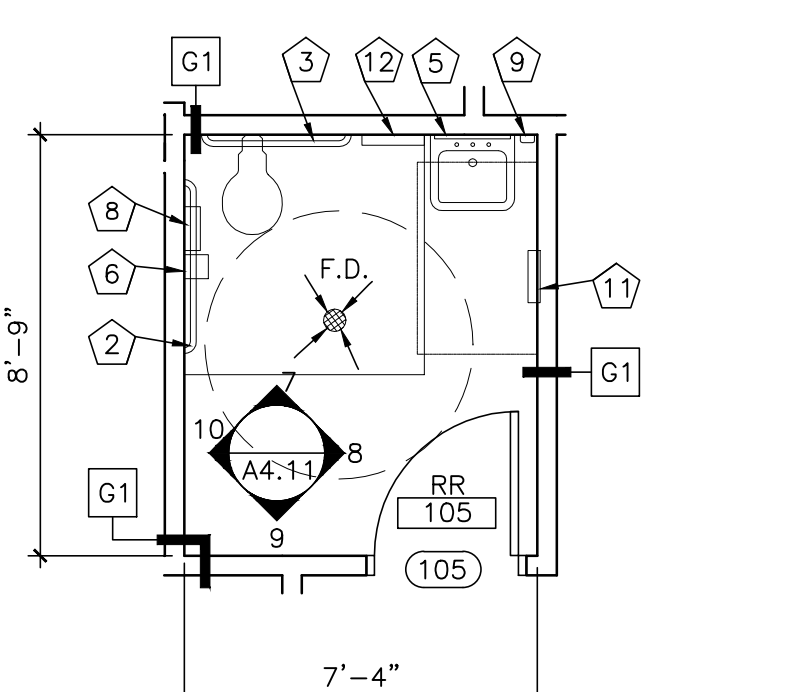
9 SOUTH ELEVATION RR 105
SCALE: 1/4"=1'-0"



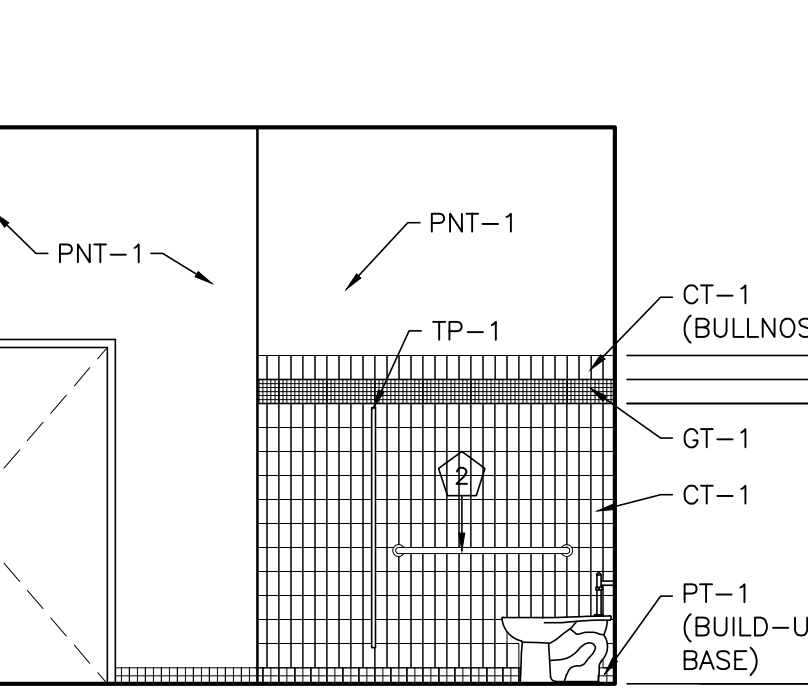
8 EAST ELEVATION RR 105
SCALE: 1/4"=1'-0"



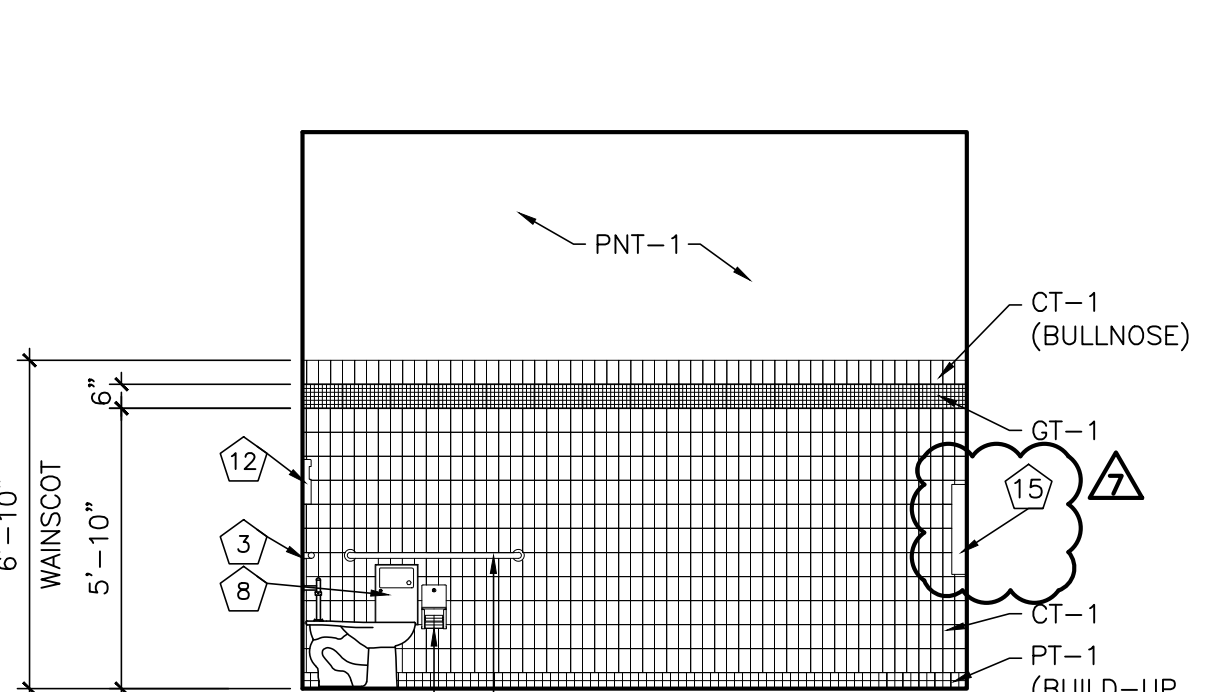
7 NORTH ELEVATION RR 105
SCALE: 1/4"=1'-0"



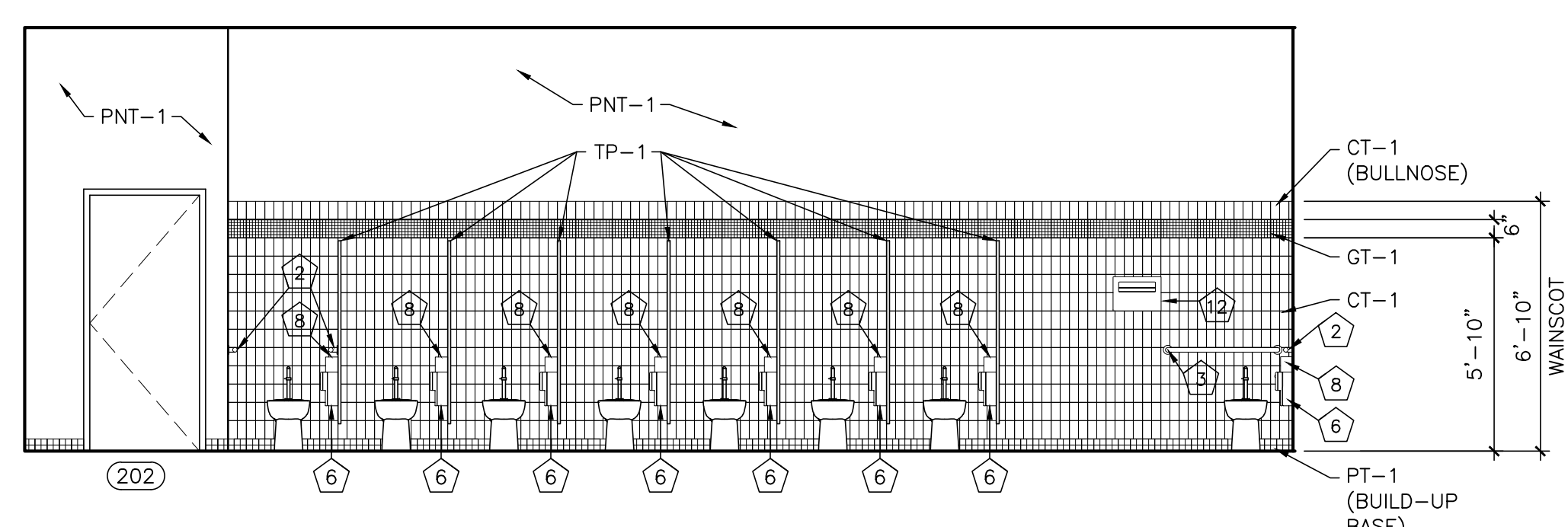
6 ENLARGED PLAN RR 105
SCALE: 1/4"=1'-0"



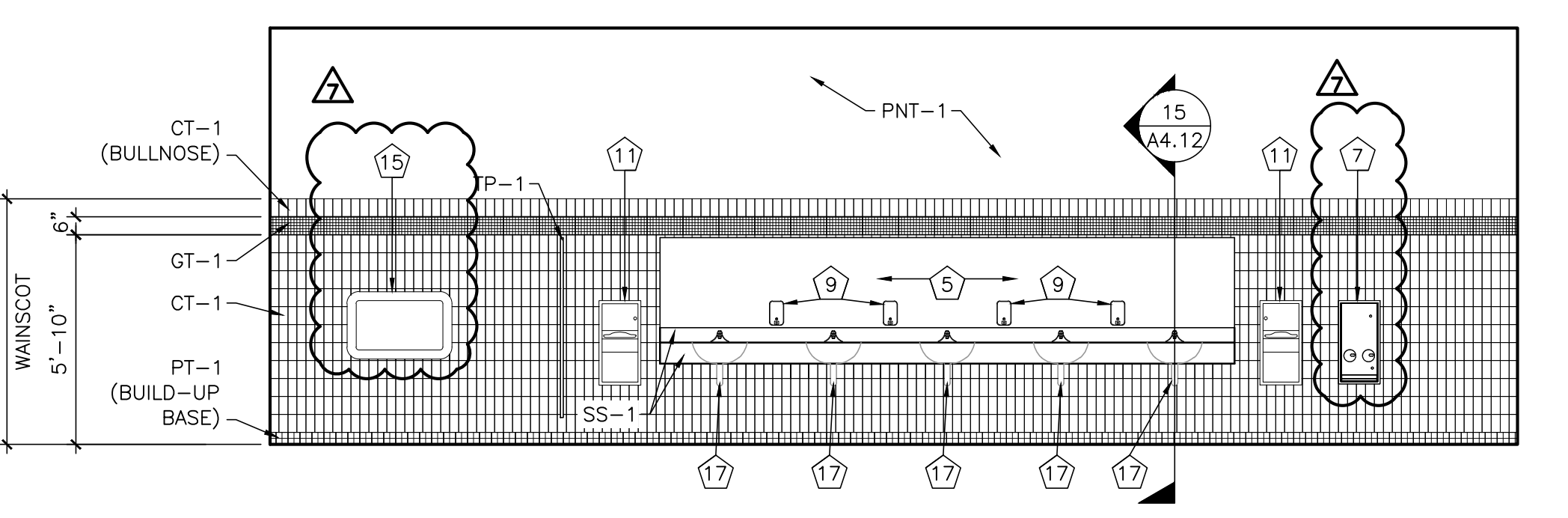
5 SOUTH ELEVATION WOMEN 155
SCALE: 1/4"=1'-0"



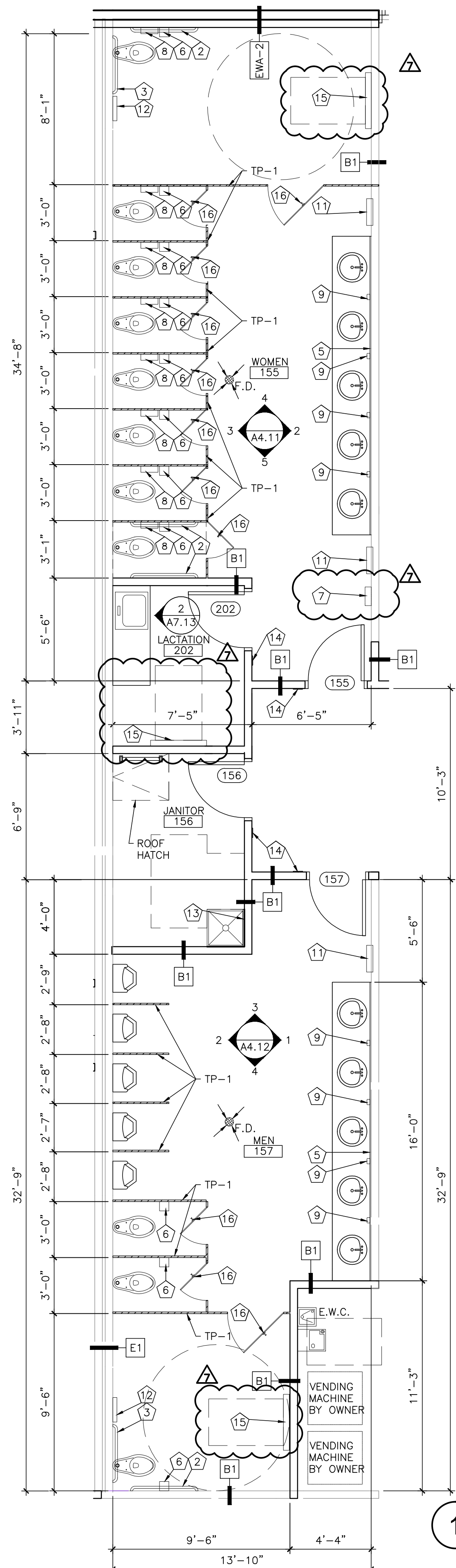
4 NORTH ELEVATION WOMEN 155
SCALE: 1/4"=1'-0"



3 WEST ELEVATION- WOMEN 155
SCALE: 1/4"=1'-0"



2 EAST ELEVATION- WOMEN 155
SCALE: 1/4"=1'-0"



1 ENLARGED FLOOR PLAN
SCALE: 1/4"=1'-0"

SHEET NOTES

1. GENERAL CONTRACTOR TO COMPLY WITH ALL TAS AND ADA APPLICABLE CODES AND REGULATIONS.
2. GENERAL CONTRACTOR TO COORDINATE WITH OWNER FOR ALL ACCESSORY PLACEMENTS AND TO INSTALL THEM PER TAS AND ADA ACCESSIBLE MOUNTING AND ACCESSORY SCHEDULE HEIGHTS.
3. ALL TOILET PARTITIONS TO BE FLOOR ANCHORED.
4. URINAL PARTITIONS TO BE WALL MOUNTED.

ACCESSORY SCHEDULE

KEY	ITEM	ADULT	
		STANDARD	HANDICAP (HC)
-	WATER CLOSET (WC)	15" TO TOP OF SEAT	17" TO TOP OF SEAT
-	URINAL (UR)	24" TO TOP OF RIM	17" TO TOP OF RIM
-	LAVATORY (LAV)	34" TO TOP	27" TO BOTTOM OF APRON
1	GRAB BAR (48")	-	33" MIN./36" MAX. TO THE TOP OF THE GRIPPING SURFACE
2	GRAB BAR (42")	-	33" MIN./36" MAX. TO THE TOP OF THE GRIPPING SURFACE
3	GRAB BAR (36")	-	33" MIN./36" MAX. TO THE TOP OF THE GRIPPING SURFACE
4	ELECTRIC HAND DRYER	48" TO CONTROL	38" TO CONTROL
5	FRAMED WALL MOUNTED MIRROR	74" TO TOP	40" TO BOTTOM OF REFLECTIVE SURFACE
6	TISSUE DISPENSER	15" TO CONTROL DEVICE	15" TO CONTROL DEVICE
7	SANITARY NAPKIN DISPENSER	48" TO CONTROL DEVICE	48" TO CONTROL DEVICE
8	SANITARY NAPKIN DISPOSAL	19" TO CONTROL DEVICE	19" TO CONTROL DEVICE
9	SURFACE MOUNTED SOAP DISPENSER	48" TO CONTROL DEVICE	48" TO CONTROL DEVICE
10	COUNTER MOUNTED SOAP DISPENSER	AT COUNTER	AT COUNTER - 34" MAX.
11	PAPER TOWEL DISPENSER/DISPOSAL	48" TO CONTROL DEVICE	48" TO CONTROL DEVICE
12	DISPOSABLE SEAT COVER DISPENSER	48" TO CONTROL DEVICE	48" TO CONTROL DEVICE
13	MOP-HOOK	48" TO CONTROL DEVICE	48" TO CONTROL DEVICE
14	ACCESSIBLE SIGNAGE	60" TO CENTER OF SIGN	60" TO CENTER OF SIGN
15	DIAPER CHANGING STATION	27" TO UNDER OF UNFOLDED SURFACE	-
16	CLOTHES/TOWEL HOOK	-	48" MAXIMUM TO CENTER
17	FOAM PIPE INSULATION WRAPPING	ALL EXPOSED LAVATORY PIPING	-
18	SHOWER COMPARTMENT SEAT	-	17" MIN 19" MAX TO TOP OF UNFOLDED SURFACE
19	SHOWER CURTAIN AND ROD	76 1/2" TO CENTER OF BAR FOR 72" CURTAIN	-
20	SHOWER HEAD	-	48" W/O HOSE RE: MEP DWG'S
21	GRAB BAR (18")	-	33" MIN./36" MAX. TO THE TOP OF THE GRIPPING SURFACE
22	GRAB BAR (24")	-	33" MIN./36" MAX. TO THE TOP OF THE GRIPPING SURFACE
23	GRAB BAR (60")	-	33" MIN./36" MAX. TO THE TOP OF THE GRIPPING SURFACE
24	TWO-WALL GRAB BAR	-	33" MIN./36" MAX. TO THE TOP OF THE GRIPPING SURFACE

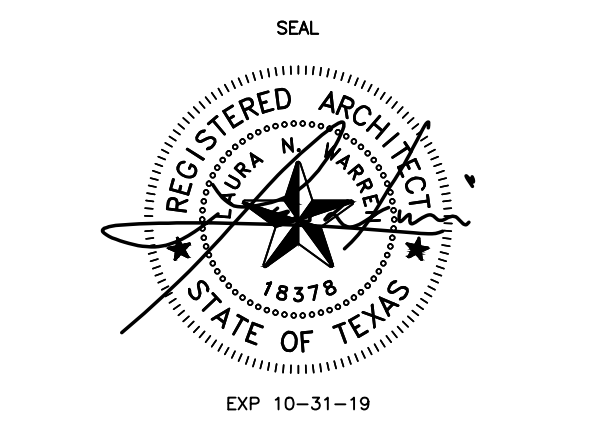
NOTE: NOT ALL ACCESSORIES MAY BE USED.



1801 SOUTH SECOND ST.
SUITE 330
MCALLEN, TX 78503
956.994.1900
twgarch.com

THESE DRAWINGS AND INFORMATION CONTAINED HEREIN ARE PROPERTY AND THE SOLE PROPERTY OF THE WARREN GROUP ARCHITECTS, INC. THEY MAY NOT BE REUSED, REPRODUCED OR ALTERED IN ANY WAY WITHOUT PRIOR WRITTEN APPROVAL FROM AND APPROPRIATE COMPENSATION TO THE WARREN GROUP ARCHITECTS, INC.

REVISION	DATE	DESCRIPTION	APPROVED BY
A001	5-30-2019	REFER ADDENDUM 1 ITEM NO. 3	TWG
A002	5-4-2019	REFER ADDENDUM 2	TWG
A003	5-18-2019	PNT-6 EXTERIOR PAINT; WALL DETAIL FOR PATCHED WALL OPENING; ROOF RIDGE	TWG
A004	5-19-2019	NAPKIN/TAMPON DISPENSER AND DIAPER CHANGING STATIONS ADDED	TWG
A007			



PROPOSED

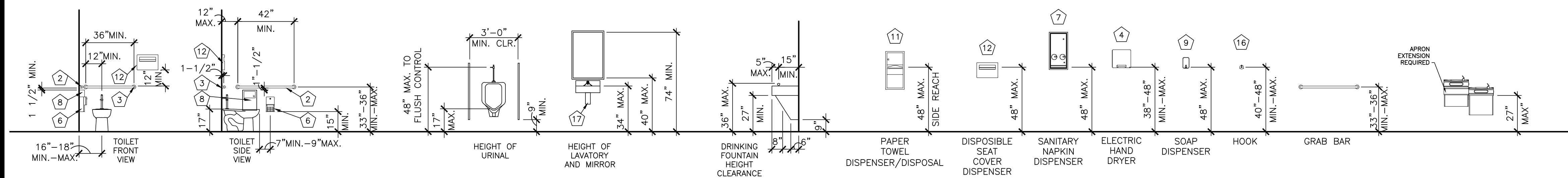
TROPICAL TEXAS BEHAVIORAL HEALTH- AMBULATORY SERVICE FACILITY

871 OLD ALICE ROAD
BROWNSVILLE, TEXAS

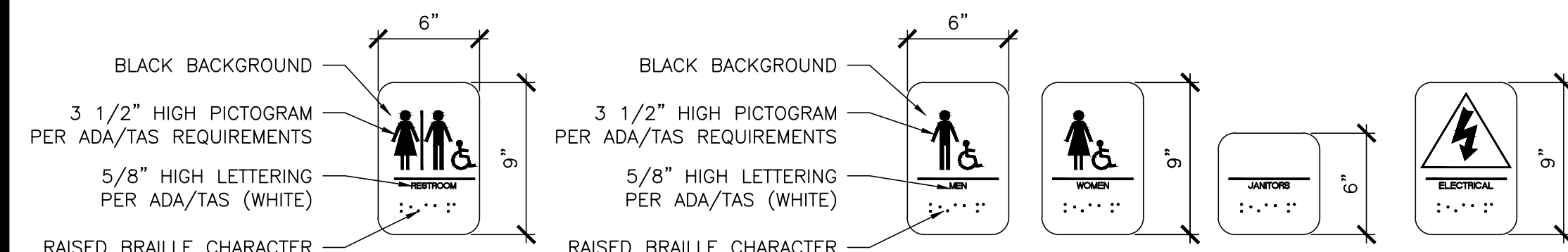
PROJECT
DATE
REVISED

1591801
05/17/2019
06/16/2019

A4.11 ADD7
ENLARGED PLANS

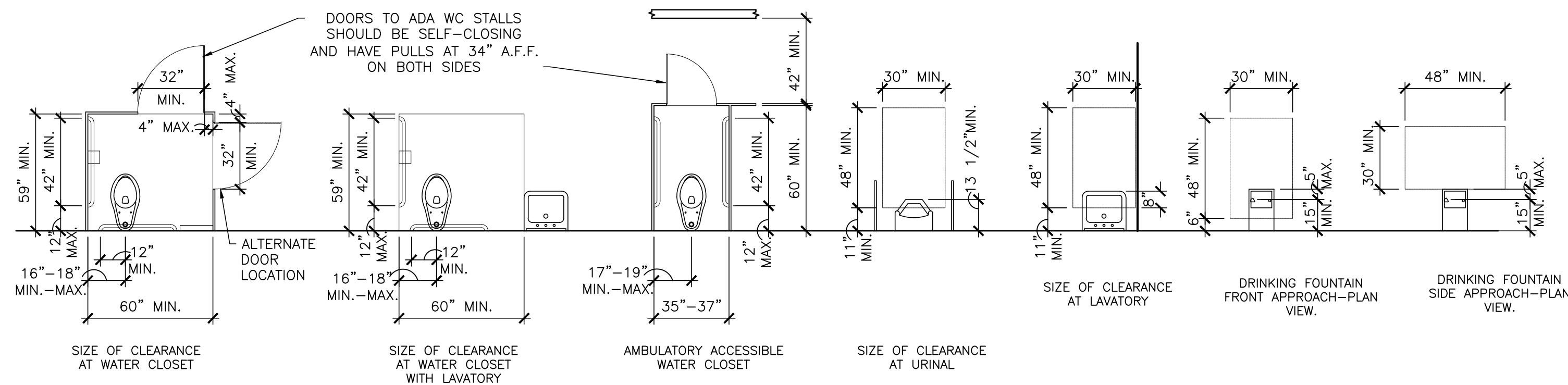


17 TAS/ADA ACCESSIBLE MOUNTING HEIGHT
SCALE: 1/4"=1'-0"

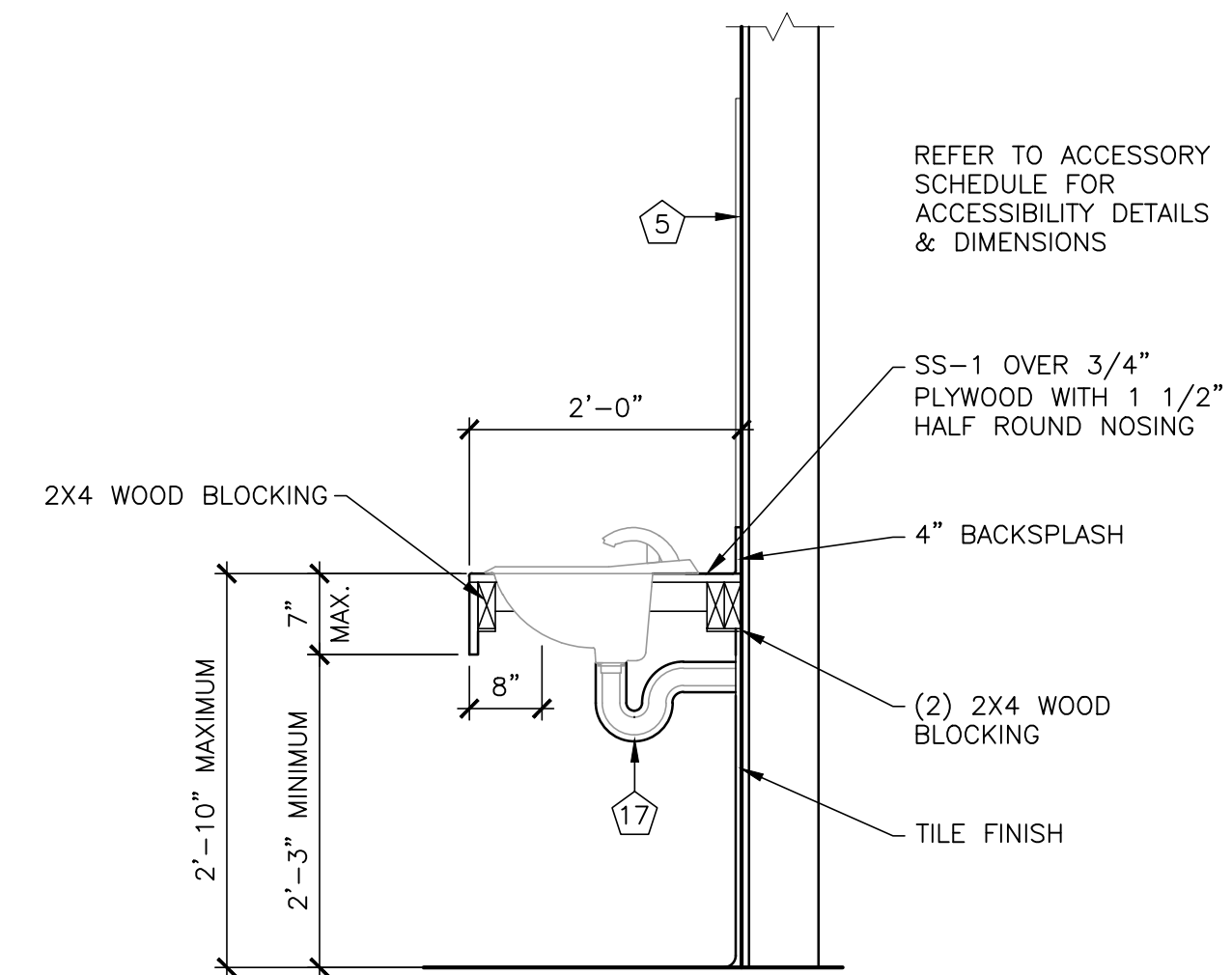


NOTES:
1. GENERAL CONTRACTOR TO COMPLY WITH ALL APPLICABLE ADA/TAS REQUIREMENTS.

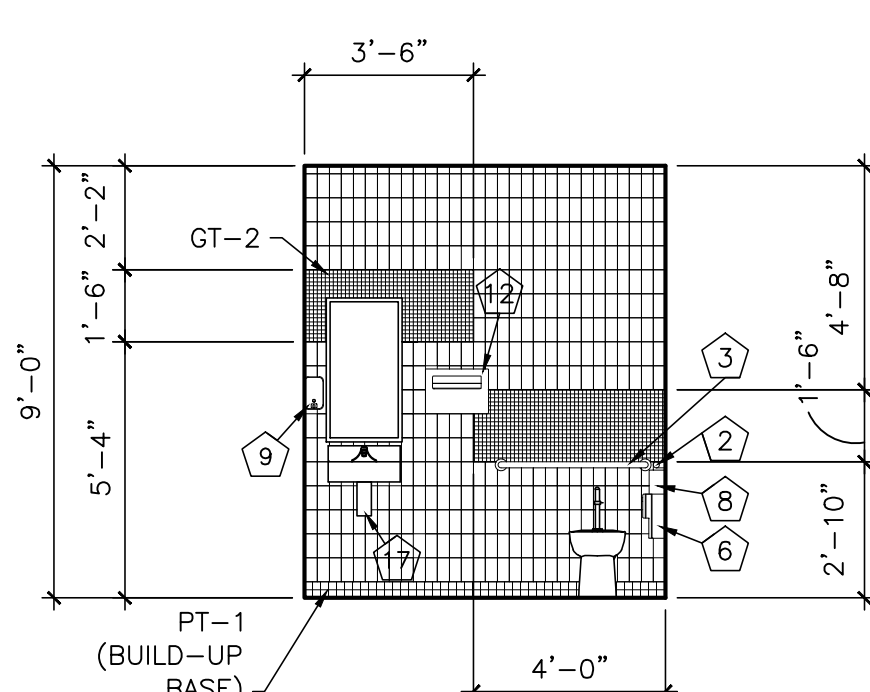
16 TAS/ADA ACCESSIBLE SIGNAGE SCHEDULE
SCALE: 1 1/2"=1'-0"



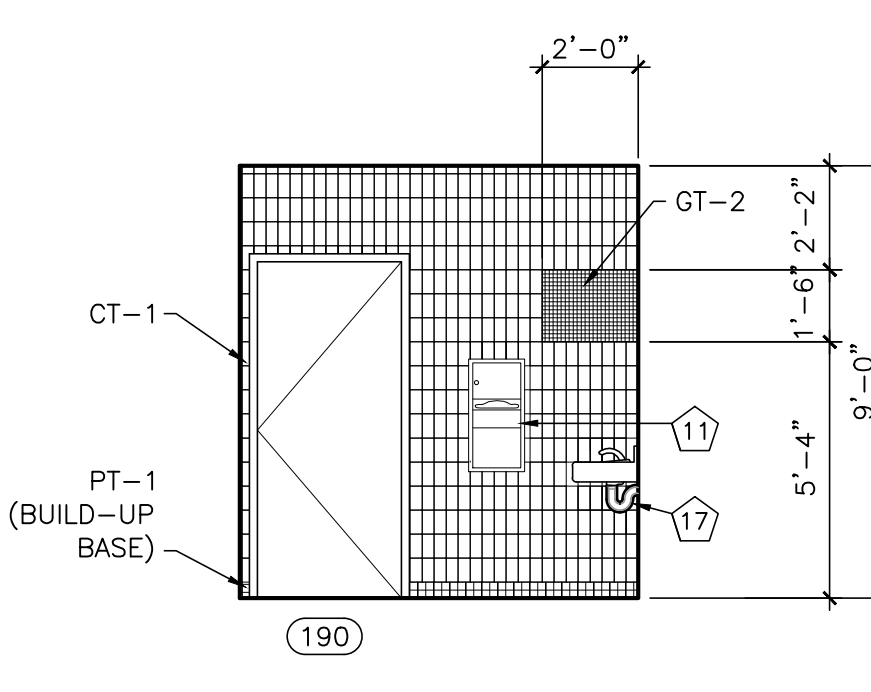
15 TAS/ADA ACCESSIBLE FIXTURE CLEARANCE
SCALE: 1/4"=1'-0"



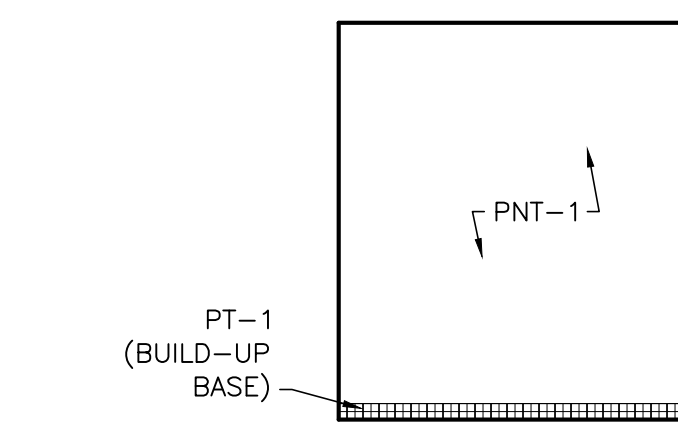
14 LAVATORY COUNTER SECTION
SCALE: 3/4"=1'-0"



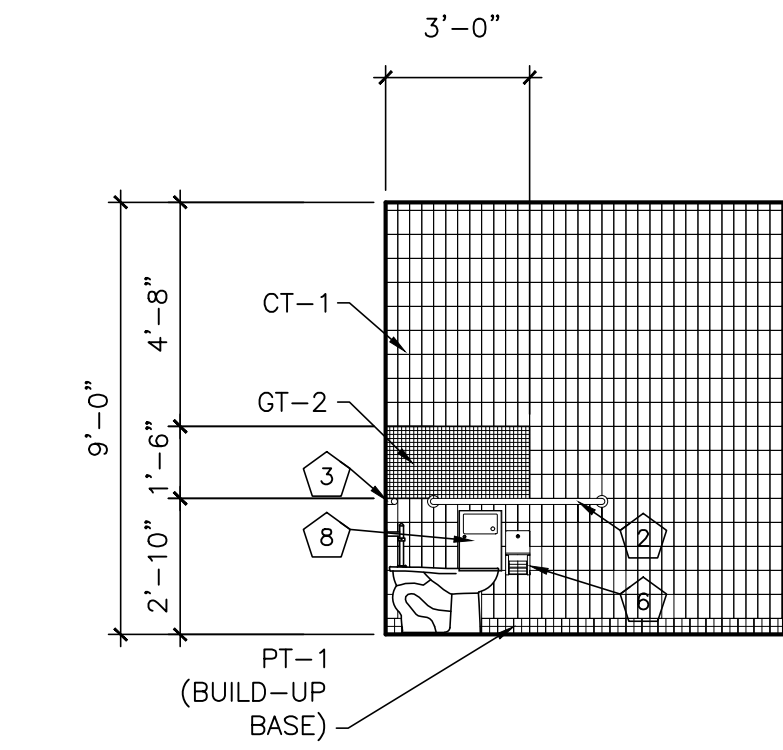
13 WEST ELEVATION RR 190
SCALE: 1/4"=1'-0"



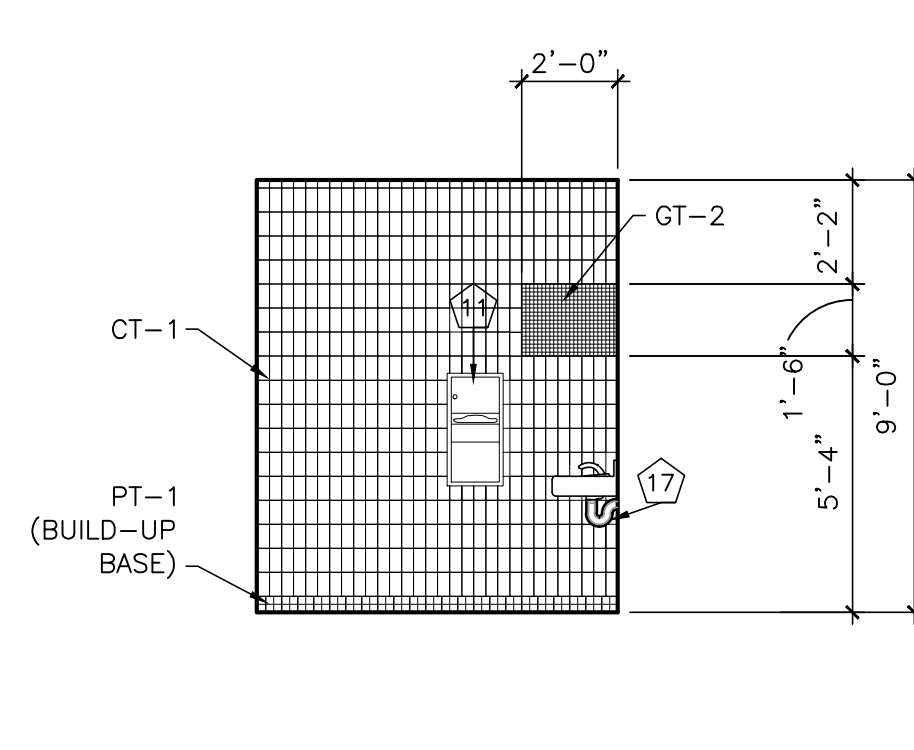
12 SOUTH ELEVATION RR 190
SCALE: 1/4"=1'-0"



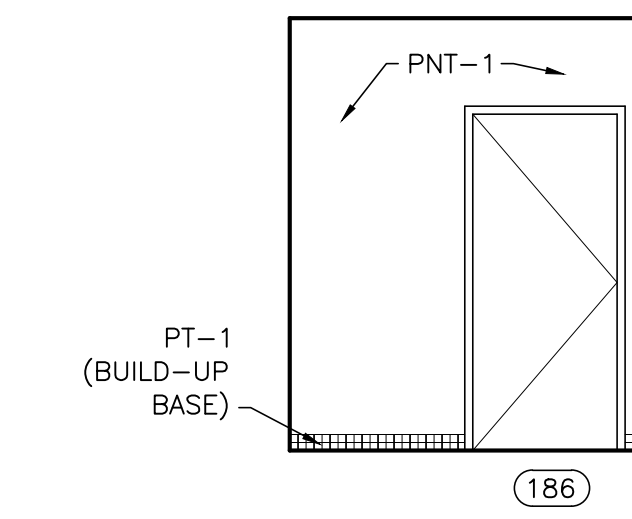
11 EAST ELEVATION RR 190
SCALE: 1/4"=1'-0"



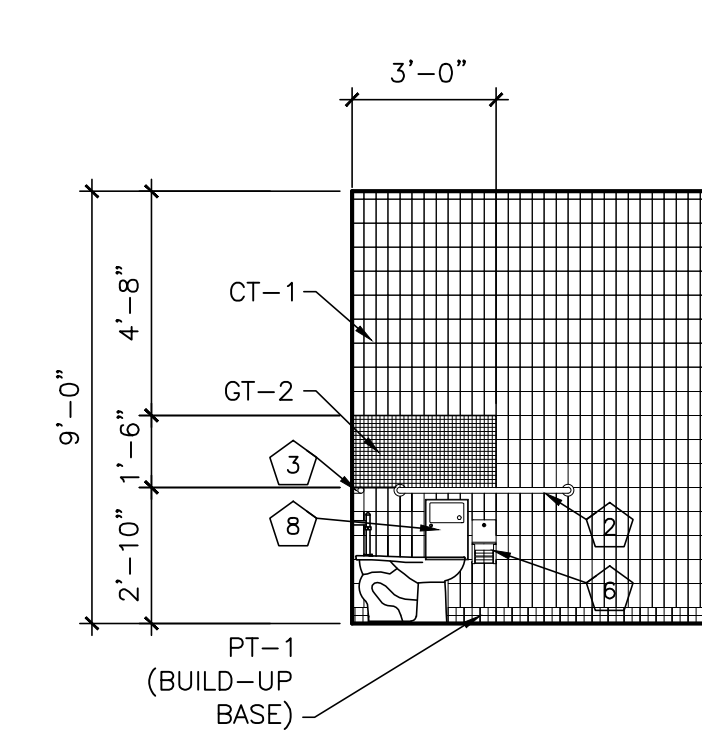
10 NORTH ELEVATION RR 190
SCALE: 1/4"=1'-0"



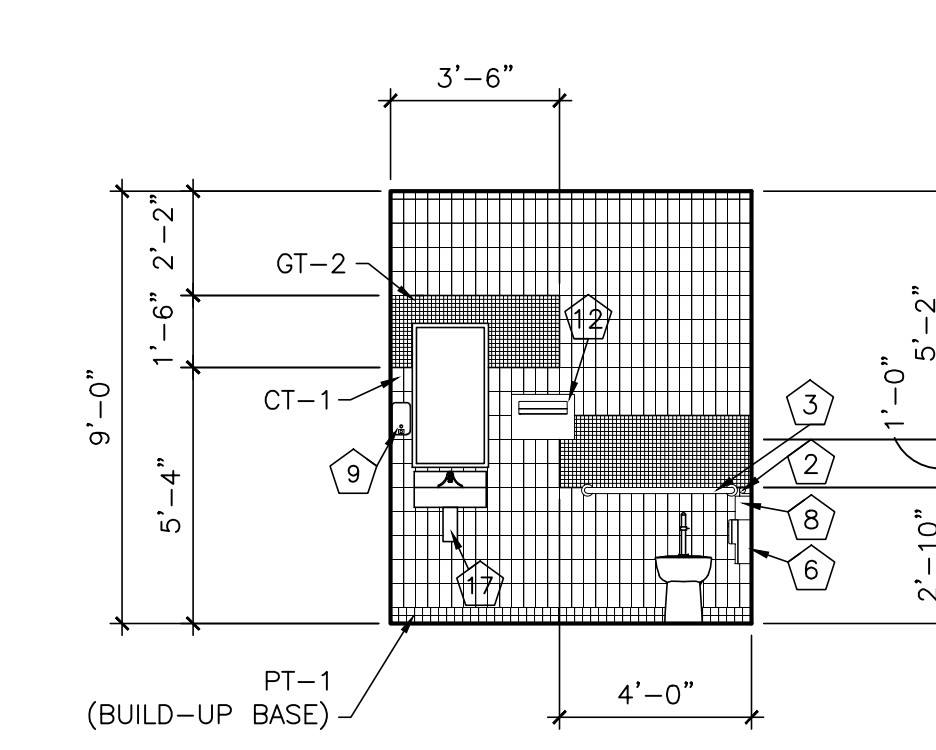
9 WEST ELEVATION RR 186
SCALE: 1/4"=1'-0"



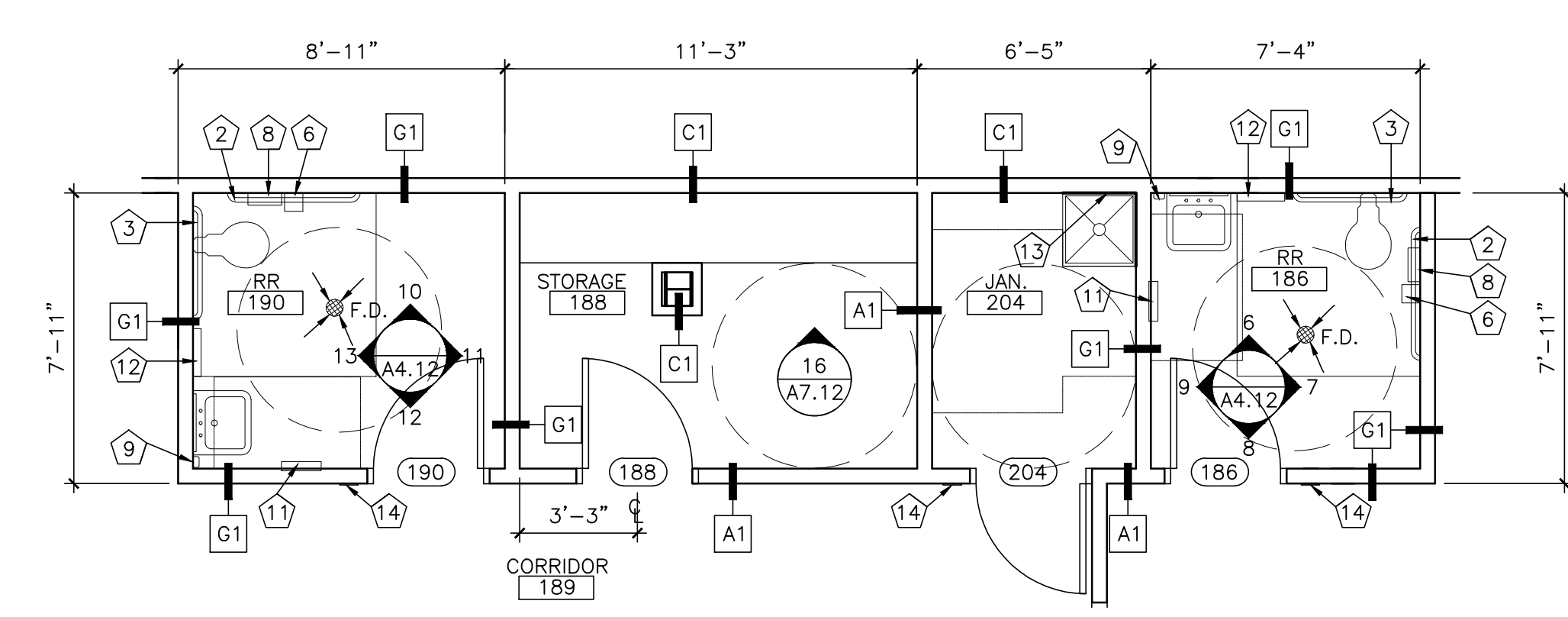
8 SOUTH ELEVATION RR 186
SCALE: 1/4"=1'-0"



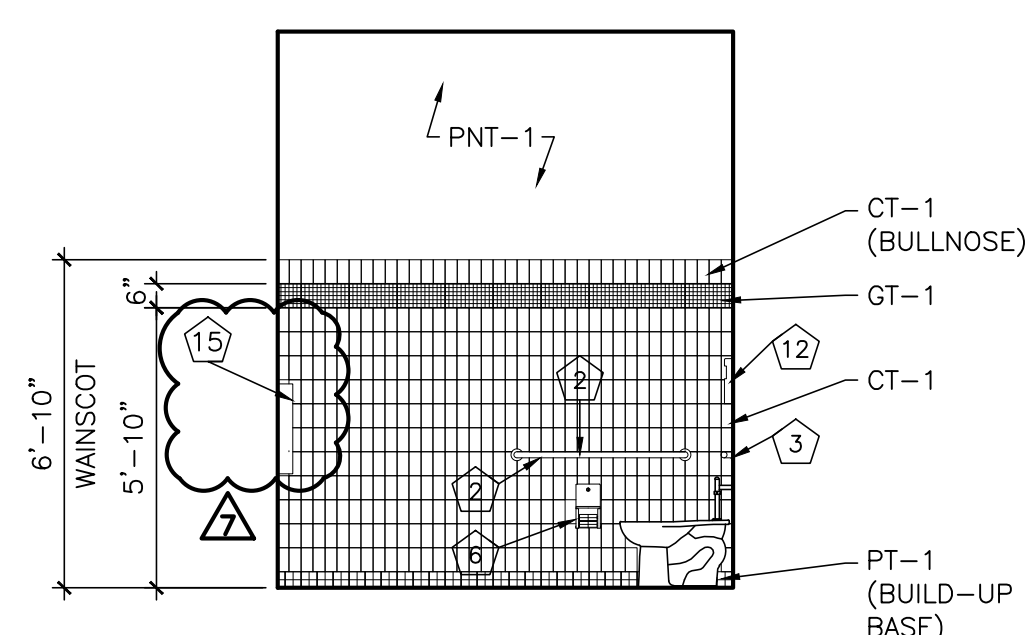
7 EAST ELEVATION RR 186
SCALE: 1/4"=1'-0"



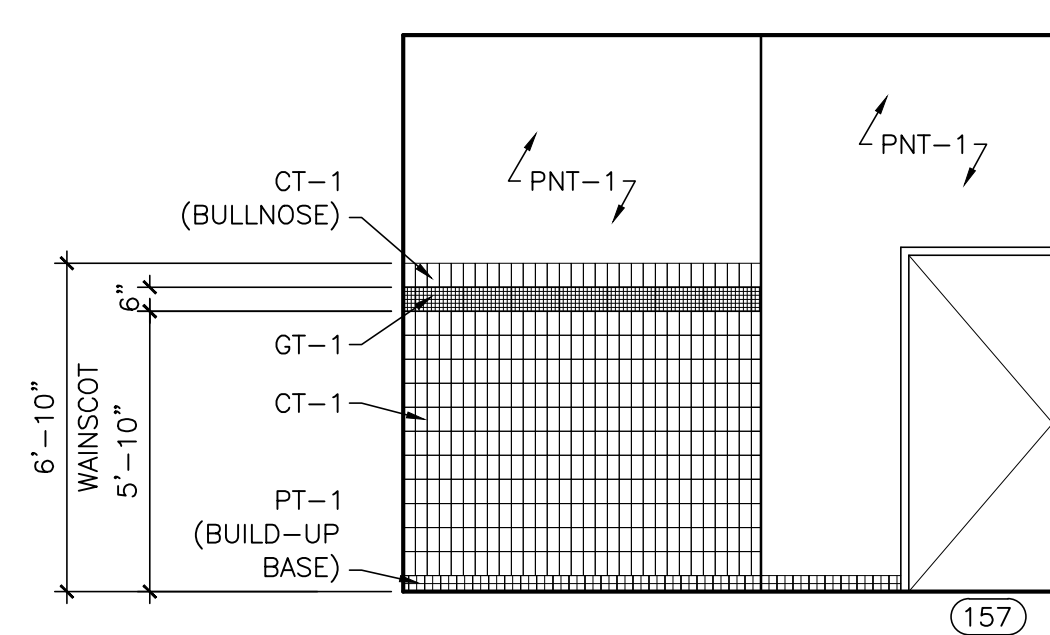
6 NORTH ELEVATION RR 186
SCALE: 1/4"=1'-0"



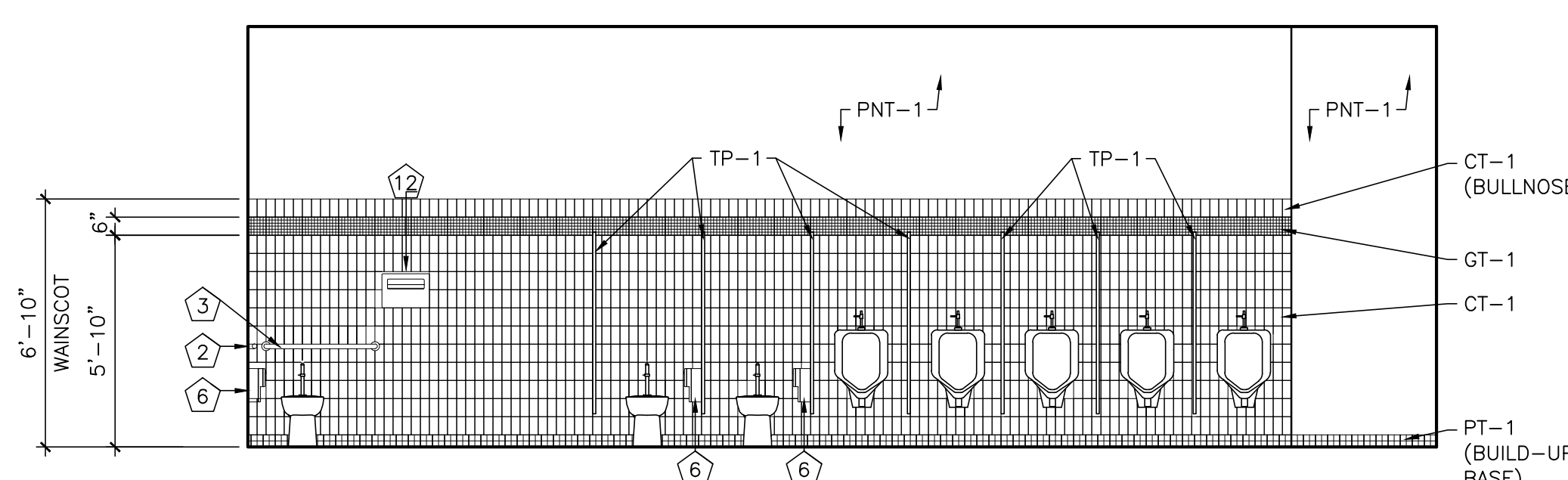
5 ENLARGED FLOOR PLAN
SCALE: 1/4"=1'-0"



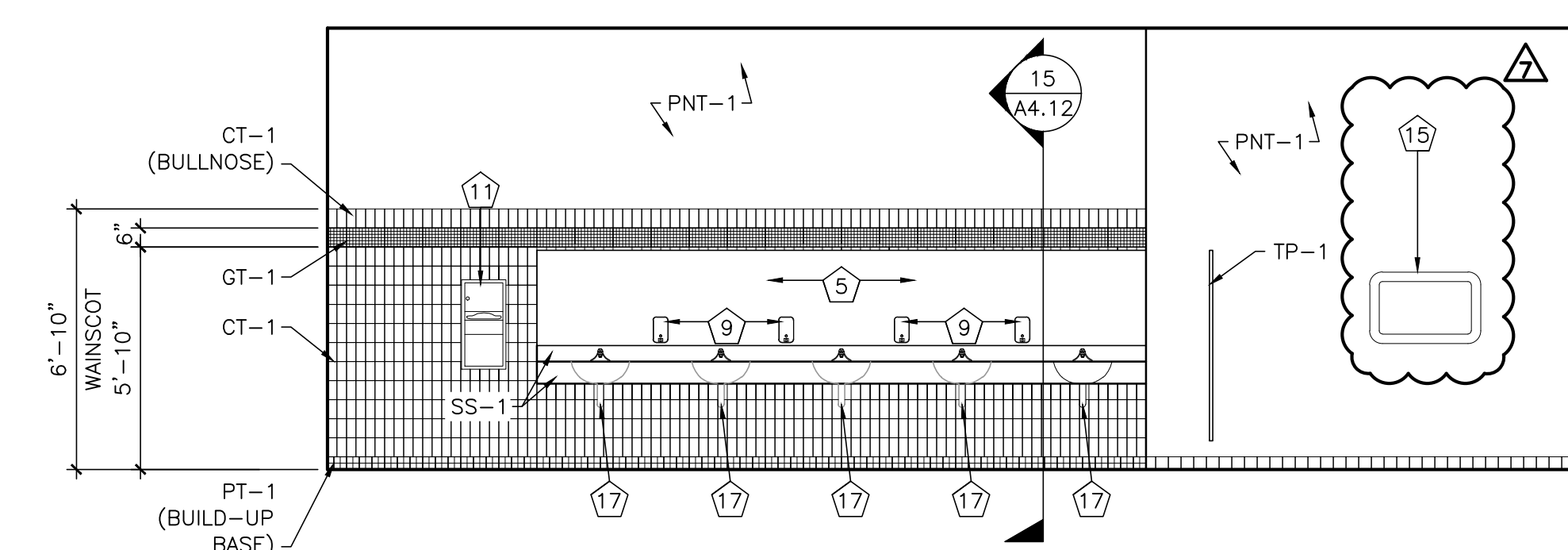
4 SOUTH ELEVATION MEN 157
SCALE: 1/4"=1'-0"



3 NORTH ELEVATION MEN 157
SCALE: 1/4"=1'-0"



2 WEST ELEVATION- MEN 157
SCALE: 1/4"=1'-0"



1 EAST ELEVATION- MEN 157
SCALE: 1/4"=1'-0"

SHEET NOTES

- GENERAL CONTRACTOR TO COMPLY WITH ALL TAS AND ADA APPLICABLE CODES AND REGULATIONS.
- GENERAL CONTRACTOR TO COORDINATE WITH OWNER FOR ALL ACCESSORY PLACEMENTS AND TO INSTALL THEM PER TAS AND ADA ACCESSIBLE MOUNTING AND ACCESSORY SCHEDULE HEIGHTS.
- ALL TOILET PARTITIONS TO BE FLOOR ANCHORED.
- URINAL PARTITIONS TO BE WALL MOUNTED.

ACCESSORY SCHEDULE

KEY	ITEM	ADULT	
		STANDARD	HANDICAP (HC)
-	WATER CLOSET (WC)	15" TO TOP OF SEAT	17" TO TOP OF SEAT
-	URINAL (UR)	24" TO TOP OF RIM	17" TO TOP OF RIM
-	LAVATORY (LAV)	34 TO TOP	27" TO BOTTOM OF APRON
1	GRAB BAR (48")	-	33" MIN./36" MAX. TO THE TOP OF THE GRIPPING SURFACE
2	GRAB BAR (42")	-	33" MIN./36" MAX. TO THE TOP OF THE GRIPPING SURFACE
3	GRAB BAR (36")	-	33" MIN./36" MAX. TO THE TOP OF THE GRIPPING SURFACE
4	ELECTRIC HAND DRYER	48" TO CONTROL	36" TO CONTROL
5	FRAMED WALL MOUNTED MIRROR	74" TO TOP	40" TO BOTTOM OF REFLECTIVE SURFACE
6	TISSUE DISPENSER	15" TO CONTROL DEVICE	15" TO CONTROL DEVICE
7	SANITARY NAPKIN	48" TO CONTROL DEVICE	48" TO CONTROL DEVICE
8	SANITARY NAPKIN DISPOSAL	19" TO CONTROL DEVICE	19" TO CONTROL DEVICE
9	SURFACE MOUNTED SOAP DISPENSER	48" TO CONTROL DEVICE	48" TO CONTROL DEVICE
10	COUNTER MOUNTED SOAP DISPENSER	AT COUNTER	AT COUNTER - 34" MAX.
11	PAPER TOWEL DISPENSER/DISPOSAL	48" TO CONTROL DEVICE	48" TO CONTROL DEVICE
12	DISPOSIBLE SEAT COVER DISPENSER	48" TO CONTROL DEVICE	48" TO CONTROL DEVICE
13	MOP-HOOK	48" TO CONTROL DEVICE	48" TO CONTROL DEVICE
14	ACCESSIBLE SIGNAGE	60" TO CENTER OF SIGN	60" TO CENTER OF SIGN
15	DIAPER CHANGING STATION	27" TO UNDER OF UNFOLDED SURFACE	-
16	CLOTHES/TOWEL HOOK	-	48" MAXIMUM TO CENTER
17	FOAM PIPE INSULATION WRAPPING	ALL EXPOSED LAVATORY PIPING	-
18	SHOWER COMPARTMENT SEAT	-	17" MIN 19" MAX TO TOP OF UNFOLDED SURFACE
19	SHOWER CURTAIN AND ROD	76 1/2" TO CENTER OF BAR FOR 72" CURTAIN	-
20	SHOWER HEAD	-	48"W/O HOSE RE: MEP DWG'S
21	GRAB BAR (18")	-	33" MIN./36" MAX. TO THE TOP OF THE GRIPPING SURFACE
22	GRAB BAR (24")	-	33" MIN./36" MAX. TO THE TOP OF THE GRIPPING SURFACE
23	GRAB BAR (60")	-	33" MIN./36" MAX. TO THE TOP OF THE GRIPPING SURFACE
24	TWO-WALL GRAB BAR	-	33" MIN./36" MAX. TO THE TOP OF THE GRIPPING SURFACE

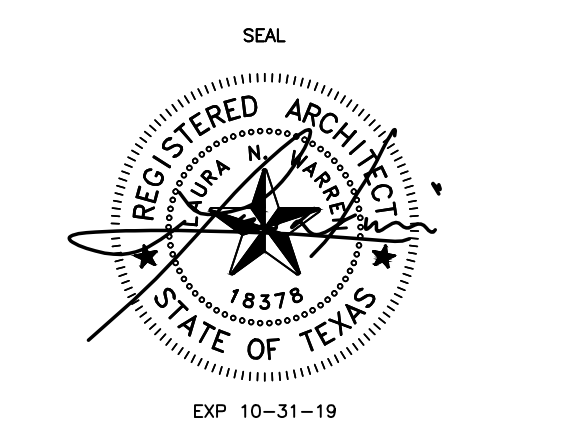
NOTE: NOT ALL ACCESSORIES MAY BE USED.



1801 SOUTH SECOND ST.
SUITE 330
McALLEN, TX 78503
956.994.1900
twgarch.com

THESE DRAWINGS AND INFORMATION CONTAINED HEREIN ARE PROPERTY AND THE SOLE PROPERTY OF THE WARREN GROUP ARCHITECTS, INC. THEY MAY NOT BE REUSED, REPRODUCED OR ALTERED IN ANY WAY WITHOUT PRIOR WRITTEN APPROVAL FROM AND APPROPRIATE COMPENSATION TO THE WARREN GROUP ARCHITECTS, INC.

REVISION	DATE	DESCRIPTION
A001	5-30-2019	REFER ADDENDUM 1 ITEM NO. 3
A002	5-4-2019	REFER ADDENDUM 2
A003	5-18-2019	PNT-6 EXTERIOR PAINT; WALL DETAIL FOR PATCHED WALL OPENING; ROOF RIDGE
A004	5-19-2019	NAPKIN/TAMPON DISPENSER AND DIAPER CHANGING STATIONS ADDED
A007		



PROPOSED

**TROPICAL TEXAS
BEHAVIORAL HEALTH-
AMBULATORY SERVICE
FACILITY**

871 OLD ALICE ROAD
BROWNSVILLE, TEXAS

PROJECT
DATE
REVISED

1591801
06/17/2019
06/19/2019

A4.12 ADD7
ENLARGED PLANS