

May 17, 2019

ADDENDUM ACKNOWLEDGEMENT FORM

To Whom It May Concern:

Concerning the **PSJA ISD CARMAN ELEMENTARY SCHOOL AND SANTOS LIVAS ELEMENTARY SCHOOL PLAYGROUND IMPROVEMENTS BID # 18-19-049**, to be opened at 4:00 p.m., Tuesday, May 21, 2019. Please consider the following:

Addendum Number:	Description of REVISED Addendum:
2	QUESTIONS AND ANSWERS ADDITIONS / CLARIFICATIONS / DRAWINGS

For any questions pertaining to these changes, please contact Emily Garza, Director of Purchasing at (956) 354-2000.

Sincerely,



Emily Garza
Director of Purchasing

With the acceptance of this form, I acknowledge that I have received the above **“ADDENDUM ACKNOWLEDGEMENT FORM”** for the **PSJA ISD CARMAN ELEMENTARY SCHOOL AND SANTOS LIVAS ELEMENTARY SCHOOL PLAYGROUND IMPROVEMENTS BID # 18-19-049**, to be opened at 4:00 p.m., Tuesday, May 21, 2019. Please include a signed copy of this **“ADDENDUM ACKNOWLEDGMENT FORM”** with your bid/proposal.

Company Name: _____	Authorized Signature: _____
Address: _____	Authorized Signature (Print): _____
City / State / Zip: _____	Email: _____
Telephone Number: _____	Fax Number: _____

START COLLEGE NOW! COMPLETE EARLY! GO FAR!

ADDENDUM # 2

Date: May 16, 2019

PROJECT: P S J A I. S. D.
Carman Elementary School & Santos Livas
Elementary School Playground Improvements
Bid # 18-19-049

ARCHITECT: EGV Architects, Inc.
220 S. Bridge
Hidalgo, TX 78557
(956) 843-2987



This addendum applies to work designated herein, shall be understood to be and as such shall be part and is included in the contract.

ITEM #1 Questions / Requests for Substitutions

- Refer to attached questions and answers page labeled **ATTACHMENT #1** (1 page).

ITEM #2 Addition, Specifications Section 10800 Toilet and Bath Accessories

- Add World Dryer to the list of acceptable manufacturers for the hand dryers.
- VERDEdri Q-974 in brushed stainless steel can be used as an equal to that specified.

ITEM #3 Clarification, Specifications Section 11600 Athletic & Outdoor Equipment

- Delete section 2.2.4 Picnic equipment by Belson Outdoors from this specification.
- Picnic tables shall be as per Site Equipment Schedule on Drawings, Sheet L4.
- Add Heartland Park & Recreation (Action Fit Outdoors by Ultra Site) to the list of acceptable manufacturers for the outdoor exercise equipment and shade structures.

ITEM #4 Addition, Specifications Section 11682 Outdoor Basketball Equipment

- Add Draper, Inc. to the list of acceptable manufacturers for the outdoor basketball equipment.

ITEM #5 Clarification, Addendum #1, Question #1 on Attachment #2, 4th bullet

- The playground area shall have engineered wood fiber as per the Landscape Materials Schedule on Sheet L1 and Detail 6/L3. Playground manufacturer shall provide a **turn-key** project to include, but not limited to the following: specific depth relative to the playground fall height and Engineered wood fiber for their playground equipment and the playground concrete curb (refer to Detail 5 on Sheet L3). The General Contractor will then perform the excavation, filter fabric, stone, sumps, etc. as per details.
- Attached please find the specifications for the Engineered wood fiber, labeled **ATTACHMENT #2** (5 pages) for more information.

ITEM #6 Clarification, Drawings, Sheet AS1.1

- Refer to attached drawing labeled **ATTACHMENT #3** (1 sheet) for clarification of chain link fence and deletion of Note #14 on legend. See clouded areas.

NOTIFICATION: It is the responsibility of the General Contractor to notify all of his subcontractors of the contents of all addenda.

P S J A I. S. D.
Carman & Santos Livas Playground Improvements
Bid # 18-19-049

Bids due on May 21, 2019, at 4:00 pm

QUESTIONS / REQUEST FOR SUBSTITUTIONS

1. Draper, Inc. is requesting to be added as an approved manufacturer for the outdoor basketball equipment.

Answer:

- **Draper has been added as an acceptable manufacturer for the basketball equipment.**

2. World Dryer is requesting to be added as an approved manufacturer for the hand dryers. Please let me know if either the AirMax XRM5-Q974, the VERDEdri Q-974 or the SLIMdri L-974 will be added as an equal.

Answer:

- **World Dryer has been added as an acceptable manufacturer for the hand dryers.**
- **VERDEdri Q-974 in brushed stainless steel can be used as an equal to that specified.**

3. Picnic Equipment Page 11660-4 states picnic Tables by Belson Outdoors, plans page L4 state by Park warehouse, which do we use?

Answer:

- **Picnic tables shall be as per Site Equipment Schedule on Drawings, Sheet L4.**

4. Is there a CAD Drawing of the playground for Carman or something that shows components deck heights or a model number?

Answer:

- **Refer to Addendum #1, Attachment #6 for this information.**

5. Heartland Park & Recreation is requesting to be added as an acceptable manufacturer for the outdoor exercise equipment and the shade structure?

Answer:

- **Heartland Park & Recreation (Action Fit Outdoors by Ultra Site) has been added as an acceptable manufacturer for the outdoor exercise equipment and shade structures.**

6. What manufacture do we use for the pre-engineered fabric shade structures?

Answer:

- **Refer to Question #5 above and Item # 3 from Addendum #2.**

7. Will you be needing surfacing on the exercise equipment area?

Answer:

- **No special surfacing will be required at exercise equipment areas. Exercise equipment shall be mounted on concrete surface.**

8. Santos Livas Site, on Sheet AS1.1 Legend #14 it states "New chain link fence around property see Sheet A1.01." Need clarification on fence location on property site.

Answer:

- **Refer to attached drawing labeled ATTACHMENT #3 for clarification of chain link fence and deletion of Note #14 on legend. See clouded areas.**

ADDENDUM #2, ATTACHMENT #1

9. Can Versico Fleeceback fully adhered 135 mil single ply PVR roofing systems membrane be approved as a substitute?

Answer:

Substitution request was not requested 10 days prior to bidding as per specifications Section 01010, Item 1.29.

DIVISION 2 SITEWORK
02980 ENGINEERED WOOD FIBER

Part I – General Information

A. Quality Control, Applicable Testing Certifications and Sustainability

IPEMA Certification (www.ipema.org)

- IPEMA provides a Third-Party Certification Service where an independent laboratory provides written validation of participant's certification of conformance to certain safety standards for their products.
- These certifications include ASTM F1292 and ASTM F2075.
- The Third-Party Certification Service has randomly selected and tested the products of the participating company.
- The Third-Party Certification Service performs plant and home office inspections, involving a review of participant's Quality Assurance Program, installation instructions, and compliant follow-up systems.
- The list of IPEMA certified products is maintained exclusively by TÜV SÜD America.

ASTM F1292

- *Standard Specification for Impact Attenuation of Surfacing Materials Within the Use Zone of Playground Equipment.*
- Test results must be for Engineered Wood Fiber and Mats.
 - Test performed on new material.
 - Test performed on 12-year-old Engineered Wood Fiber.
- Test results for Engineered Wood Fiber must show G-max values of less than 155G for an 8" thick system or 120G for a 12" system with a 12' drop height, and HIC values less than 1,000 for both new and 12-year-old materials.
- Test results for Engineered Wood Fiber must show G-max values of less than 200G for a 12" system with a 14' drop height, and HIC values less than 1,000 for both new and 12-year-old materials.
- Test results for mats must show G-max values of less than 200G and HIC values of less than 1,000 for a 3' drop height.

ASTM F1951

- *Standard Specification for Determination of Accessibility of Surface Systems Under and Around Playground Equipment.*
- Must meet the intent of the Americans with Disabilities Act (ADA).

ASTM F2075

- *Standard Specification for Engineered Wood Fiber for Use as a Playground Safety Surface Under and Around Playground Equipment.*
- Material must pass sieve analyses as well as other tests for tramp metal particles and hazardous metals as described in Section 9.0. Metal particles in the engineered wood fiber may cause injury if a child falls on them. Unsafe levels of hazardous metals such as lead, arsenic, or cadmium can be harmful to children. Standard wood chips, bark mulch or materials from recycled pallets will not be acceptable.

Part II – Material Data

Engineered Wood Fiber by GreenSoft or as recommended by the playground equipment manufacturer provided they meet this specification.

- Shredded virgin wood fiber consisting of randomly sized pieces.
 - From wood mills and truss plants.
 - Does not exceed 2" in length.
 - Must comply with ASTM F2075 sieve size requirements. Contains no more than 15% fines to aid in compaction.
 - No recycled pallets.
 - Depth of material – based on Critical Fall Height
 - <10' = 6"
 - 10' = 8"
 - 12' = 10"
 - 14' = 12"

DEPTH QUANTITY PLAYGROUND AREA

8" 38 cubic yards per 1,000 sq. ft.

9" 42 cubic yards per 1,000 sq. ft.

10" 46 cubic yards per 1,000 sq. ft.

11" 48 cubic yards per 1,000 sq. ft.

12" 50 cubic yards per 1,000 sq. ft.

Drainage System

- Drain Strip
 - Drainage strip that channels water away from playground.
 - Minimum flow rate of 10 gpm/ft.
 - Needle-punched 100% non-woven geotextile sleeve encasing a monofilament nylon mesh.
 - Laid out on 6' centers in the direction of the grade.
 - Prevents deterioration of GreenSoft Engineered Wood Fiber.
- Filter Fabric
 - Needle-punched 100% non-woven geotextile fabric that separates the Engineered Wood Fiber from soil below.
 - Material allows water to flow through, and prevents rock and soil contamination of the Engineered Wood Fiber.
 - Designed to cover the sub-grade and drainage strip to ensure proper drainage.
 - Seams should be overlapped 3".
- **Accessory Items**
 - Wear Mats
 - Prevent excessive wear under swings and slides.
 - 3' x 3' x 1.5" with beveled edges (ADA compliant) on all sides.
 - Placed under each swing seat, tire swing, slide exit, and sliding poles.
 - Can be placed on top, in middle or under Engineered Wood
- Fiber (but over Filter Fabric).
 - ADA Wheelchair Access Ramp
 - Crafted from High-Density Polyethylene.
 - Won't fade, splinter or crack.
 - Wide enough for motorized wheelchairs.
- Borders
 - Crafted from High-Density Polyethylene.
 - Won't fade, splinter or crack.
 - Rounded corners prevent injury.
 - Four feet long and 8" or 12" high.

1. ACCESSIBILITY

Please note: Depending on weather and usage, a GreenSoft surface will compact to provide access for wheelchairs, crutches, walkers, and wheeled vehicles within two to six weeks of installation.

2. VISUAL INSPECTION

Remove debris—especially stones, broken glass, or other foreign objects. In heavily used public parks, inspect frequently.

3. RAKING

Areas of constant wear and impact should be raked level. Pay particular attention to areas under swings, sliding poles, and at slide exits. When a GreenSoft installation is close to a sand pit, the sand may get tracked onto the Engineered Wood Fiber surface. This can change the impact attenuation of the GreenSoft surface. The surface should be vigorously raked.

4. WEAR MATS

To preserve your warranty, GreenSoft wear mats must be installed under all swings, tire swings, and slide exits. They should also be installed at other excessive wear areas, including sliding poles. The preferred method is to place the mats on top of the GreenSoft Engineered Wood Fiber. They can also be placed in the middle of the GreenSoft or directly under the GreenSoft, on top of the GreenSoft filter fabric. If these wear mats were not ordered when you ordered the GreenSoft, please call your local Representative or TFG Installations, Inc. ☐ 800-345-1953 or 914-273-8658.

5. WEEDS

On playgrounds that only receive light usage, conditions could occur that might cause sporadic weed growth. In such instances, the situation can easily be remedied by the use of a safe weed killer (call your local Cooperative Extension office) or remove weeds by hand.

6 . TOP-OFF

Experience has shown us that installations typically require topoffs after three (3) years of use (in heavy-use playgrounds, maybe sooner). The legs of the equipment should have been marked according to the specified depth when originally installed. The marks make it easy to determine when your GreenSoft surface falls below this level and requires topping off with fresh material. If the equipment was not marked, the surface should be checked at several points by using a longhandled screwdriver marked in inches to determine the actual depth. Top-offs can sometimes be scheduled with other deliveries to minimize the freight cost.

7 . WINTER CONDITIONS

Any retained moisture in your GreenSoft surface will freeze when the temperature drops below the freezing mark. Please check your surface in winter weather. When the surface is frozen, the play area should not be used. IF AT ANY TIME YOU ARE CONCERNED ABOUT THE SURFACE AND ITS PERFORMANCE, PLEASE CALL TOLL FREE 800-345-1953 OR 914-273-8658.

PLEASE NOTE:

In accordance with standard design and construction practices, TFG Installations, Inc. and its Representatives recommend using the services of a certified engineer, architect, or landscape architect who is familiar with local soil and climate conditions to evaluate and interpret any information provided.

TFG Installations, Inc. assumes no responsibility for determining the size of the playground or the Use Zone between the equipment and the border. Installer must thoroughly examine the site and specifications, carefully checking the dimensions before starting work. All instructions are subject to equipment manufacturers' installation specifications. Read GreenSoft 03 Specifications,

Installation, and Maintenance Instructions, all available from TFG Installations, Inc. ☐ 800-345-1953 or 914-273-8658 or your local Representative.

A. IN-GROUND INSTALLATIONS

1. Excavate area 8" (for 8" installation) or 12" deep (for 12" installation) with a 1% downward grade to ensure proper drainage to GreenSoft Drain Strip. It is not recommended that a GreenSoft system be installed on a grade greater than 10%. All roots, stones, and vegetation must be removed.
2. The area should be well compacted and accurately graded, especially in areas where additional fill has been brought in.
3. Cut a trench 2" wide by 6" deep all along the inside edge perpendicular to the grade and install GreenSoft Drain Strip. Connect low end of GreenSoft Drain Strip to storm drain or similar device to take water collected from playground away from site.

B. IN-GROUND (CONTINUED) AND ABOVE-GROUND INSTALLATIONS

4. Install playground equipment.
5. Install retaining border if required.
6. Cut GreenSoft Drain Strips and lay them on 6' centers in direction of grade.
7. Cover sub-grade with GreenSoft Filter Fabric 100% non-woven geotextile material. Overlap all seams 3". Make sure to cover the trench and GreenSoft Drain Strip in step #3 (if applicable). It will be necessary to slit the GreenSoft Filter Fabric to fit around the footings of the equipment. Where possible, overlap all slits with the next piece of GreenSoft Filter Fabric.
8. Install GreenSoft rubber wear mats on top or in the middle of GreenSoft® engineered wood fiber or under the fiber (on top of Filter Fabric).

To preserve your warranty, GreenSoft Wear Mats must be installed under all swings, tire swings, and slide exits.

They should also be installed at other excessive wear areas, including sliding poles. GreenSoft Wear Mats are available through your local GreenSoft representative.

9. **IMPORTANT:** With a permanent marker, mark off all the legs of the equipment to the compacted specified system depth.
10. Spread GreenSoft Wood Fiber using a Bobcat or a small front-end loader. Operator should be careful not to travel on the Filter Fabric or turn sharply on the wood fiber. It will also be necessary to use hand labor to spread. To allow for natural compaction, we supply additional wood fiber. Important: Install all the wood fiber delivered. The fiber will be several inches above grade or border until it compacts. Feather the edges to make a smooth transition to existing grade or border.
11. Hand rake for a perfectly smooth, finished surface.
12. After two weeks of active use, surface should be raked level again.
13. CPSC and ASTM Recommended Use Zones. A Use Zone of at least 6 feet must surround all equipment with the exception of:
 - a. Swings: A Use Zone equal to 4 times the height of the top rail is needed in front of and behind swings (2 times in front and 2 times behind).
 - b. Slides: The Use Zone surrounding a slide should be a minimum of 6 feet, except for the slide exit area where the Use Zone shall be a minimum of 6 feet or the distance between the highest point of the slide to the protective surfacing. The Use Zone at the slide exit need not exceed 8 feet.

PLEASE NOTE:

In accordance with standard design and construction practices, TFG Installations, Inc. and its Representatives recommend using the services of a certified engineer, architect, or landscape architect who is familiar with local soil and climate conditions to evaluate and interpret any information provided. TFG Installations, Inc. assumes no responsibility for determining the size of

the playground or the Use Zone between the equipment and the border. Installer must thoroughly examine the site and specifications, carefully checking the dimensions before starting work. All instructions are subject to equipment manufacturers' installation specifications. Read GreenSoft 01 Specifications, Installation, and Maintenance Instructions, all available from TFG Installations, Inc. ☐ 800-345-1953 or 914-273-8658 or your local Representative.

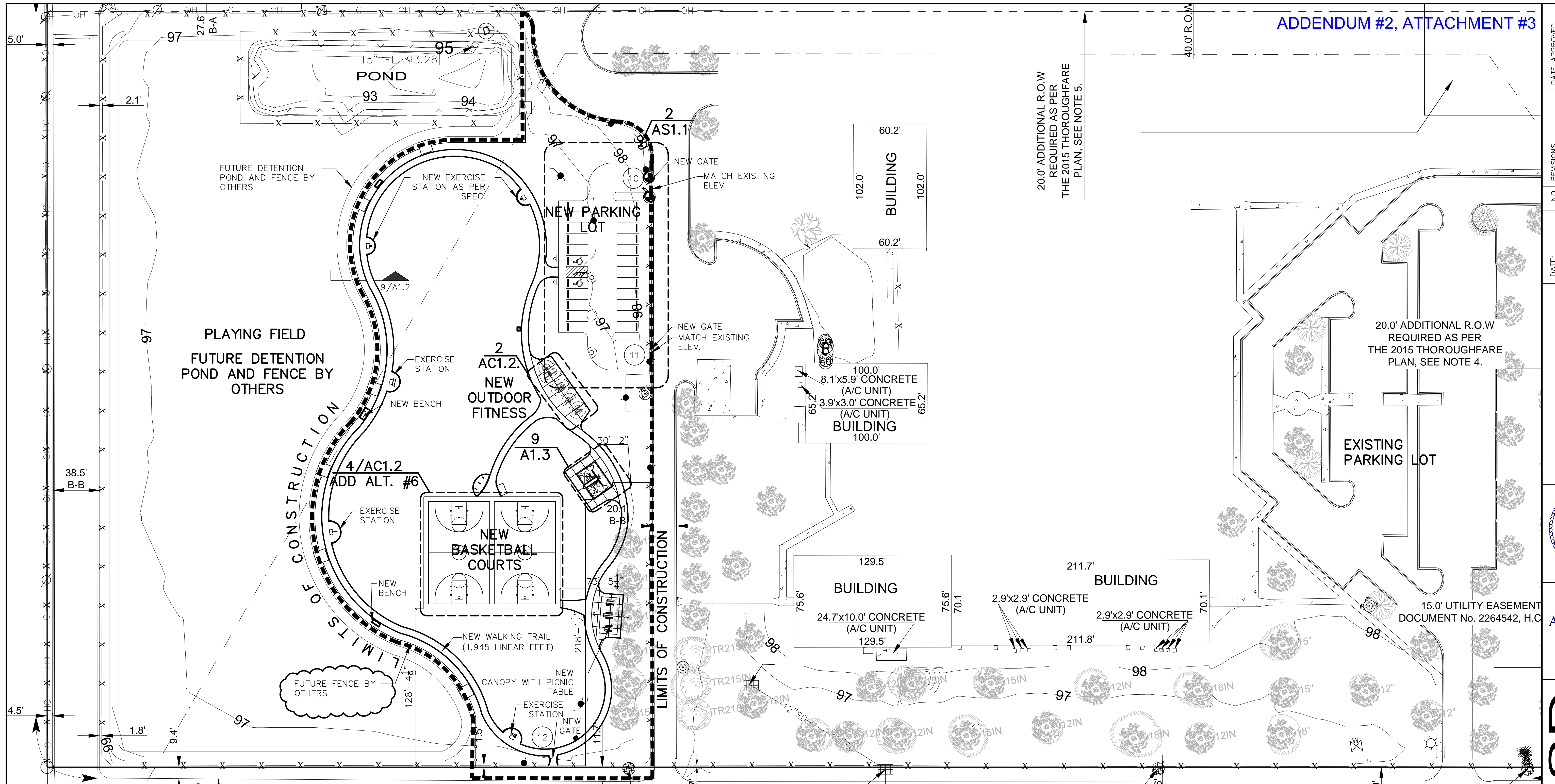
A. ABOVE-GROUND INSTALLATION ONLY

1. The area should be accurately graded with a 1% downward grade and well compacted.
2. Layout should allow for water to flow to a storm drain or similar device to take water collected from playground away from site.
3. Install playground equipment.
4. Cover sub-grade with GreenSoft Filter Fabric 100% non-woven geotextile material. Overlap all seams 3". It will be necessary to slit the GreenSoft Filter Fabric to fit around the footings of the equipment. Where possible, overlap all slits with the next piece of GreenSoft Filter Fabric.
5. Install GreenSoft rubber wear mats on top or in the middle of GreenSoft® engineered wood fiber or under the fiber (on top of Filter Fabric).

To preserve your warranty, GreenSoft Wear Mats must be installed under all swings, tire swings, and slide exits.

They should also be installed at other excessive wear areas, including sliding poles. GreenSoft Wear Mats are available through your local GreenSoft representative.

6. Install retaining border.
7. **IMPORTANT:** With a permanent marker, mark off all the legs of the equipment to the compacted specified system depth.
8. Spread GreenSoft Wood Fiber using a Bobcat or a small front-end loader. Operator should be careful not to travel on the Filter Fabric or turn sharply on the wood fiber. It will also be necessary to use hand labor to spread. To allow for natural compaction, we supply additional wood fiber. Important: Install all the wood fiber delivered. The fiber will be several inches above grade or border until it compacts. Feather the edges to make a smooth transition to existing grade or border.
9. Hand rake for a perfectly smooth, finished surface.
10. After two weeks of active use, surface should be raked level again.
11. CPSC and ASTM Recommended Use Zones. A Use Zone of at least 6 feet must surround all equipment with the exception of:
 - a. Swings: A Use Zone equal to 4 times the height of the top rail is needed in front of and behind swings (2 times in front and 2 times behind).
 - b. Slides: The Use Zone surrounding a slide should be a minimum of 6 feet, except for the slide exit area where the Use Zone shall be a minimum of 6 feet or the distance between the highest point of the slide to the protective surfacing. The Use Zone at the slide exit need not exceed 8 feet.



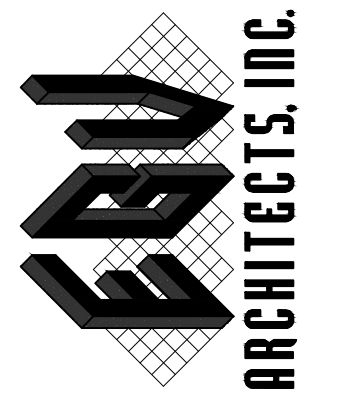
20.0' ADDITIONAL R.O.W
REQUIRED AS PER
THE 2015 THOROUGHFARE
PLAN, SEE NOTE 5.

20.0' ADDITIONAL R.O.W
REQUIRED AS PER
THE 2015 THOROUGHFARE
PLAN, SEE NOTE 4.

15.0' UTILITY EASEMENT
DOCUMENT No. 2264542, H.C

NO.	REVISIONS	DATE	APPROVED

EGV ARCHITECTS, INC.
220 S. BRIDGE STREET
PO BOX 8827
HIDALGO, TX 78557



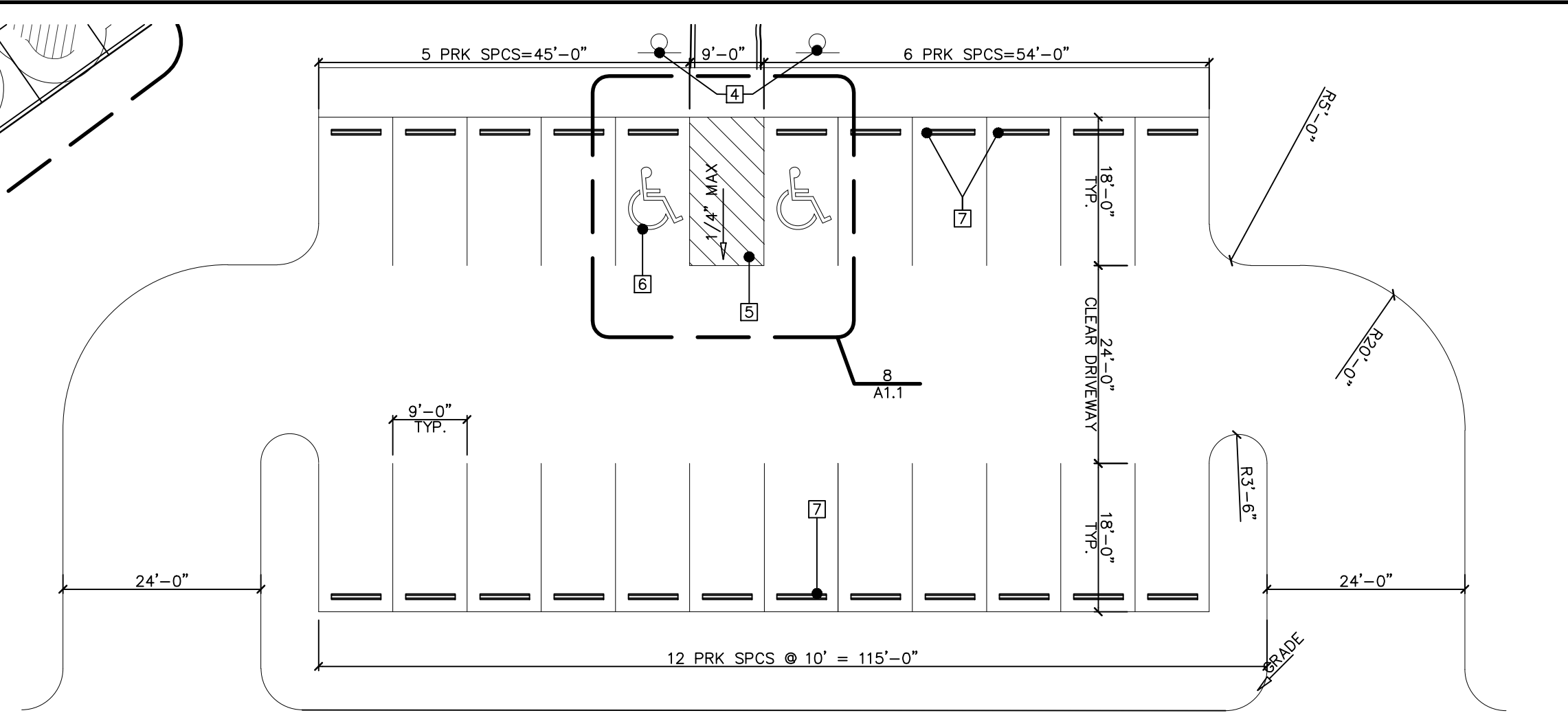
ADDENDUM #2

P.S.J.A. ISD
CARMAN ELEM. & SANTOS LIVAS ELEM.
PLAYGROUND IMPROVEMENTS

JOB NO.
FILE NO. dwg/psj/psj/playgrounds

AS1.1 SHEET OF 11

1 PROPOSED SITE PLAN
SCALE: 1" = 60' (SANTOS-LIVAS ELEMENTARY)



2 PROPOSED PARKING LOT
SCALE: 1/16" = 1' - 0"

- ALTERNATE LIST**
- ADD ALTERNATE #1: CARMAN ELEMENTARY PLAYGROUND
ADD ADDITIONAL IRRIGATION AS DETAILED IN LANDSCAPING SHEETS.
 - ADD ALTERNATE #2: CARMAN ELEMENTARY PLAYGROUND
ADD ADDITIONAL HYDROMULCH AS DETAILED IN LANDSCAPING SHEETS.
 - ADD ALTERNATE #3: CARMAN ELEMENTARY PLAYGROUND
ADD BASKETBALL COURT, BASKETBALL EQUIPMENT AND LIGHTING. DEDUCT IRRIGATION AND HYDROMULCH IF ADD ALTERNATE #3 IS ACCEPTED.
 - ADD ALTERNATE #4: CARMAN ELEMENTARY PLAYGROUND
ADD SOFTBALL FIELD LIGHTING, CONDUITS AND PULL STRINGS TO BE INCLUDED IN BASE BID.
 - ADD ALTERNATE #5: CARMAN ELEMENTARY PLAYGROUND
ADD FIELD LIGHTING AT OPEN PLAYING FIELD. CONDUITS AND PULL STRINGS TO BE INCLUDED IN BASE BID.
 - ADD ALTERNATE #6: SANTOS LIVAS ELEMENTARY PLAYGROUND
ADD BASKETBALL COURT, BASKETBALL EQUIPMENT AND LIGHTING. DEDUCT IRRIGATION AND HYDROMULCH IF ADD ALTERNATE #6 IS ACCEPTED.

- LEGEND**
- 1 NEW SIDEWALK W/ GUTTER
RE: DET. 5/G4.1
 - 2 NEW SIDEWALK WITH PIPES BELOW PAVING RE: 3/G4.1
 - 3 SIDEWALK H/C RAMP SEE DETAIL 2/G4.1 TYP.
 - 4 H/C SIGN AT EACH H/C SPACE REFER TO DET. 7/G4.1 TYP.
 - 5 PAINT/STRIP ACCESSIBLE ROUTE PER ADA STANDARDS
 - 6 MAX. 1/4" FT SLOPE
 - 7 NEW WHEEL STOP
 - 8 SAW CUT & REPLACE EXISTING CONCRETE CURB AND GUTTER
 - 9 PAINT H/C LOGO, PARKING SPACE LINES & ACCESS AISLE PER ADA STANDARDS.
 - 10 MATCH EXISTING ELEVATION
 - 11 MATCH EXISTING ASPHALT ELEVATION
 - 12 TYP. PAINTED CURB:
PAINT CURB RED & PROVIDE THE PHASE "NO PARKING TOW AWAY ZONE & FIRE LANE" AT ENDS AND 50' o.c. TYP. ALL STRIPING TO BE DONE AS PER LOCAL FIRE DEPARTMENT CODE
 - 13 NEW SPOT ELEV.
 - 14 LIMITS OF CONSTRUCTION

NOTE:
1. CONTACT CIVIL ENGINEER & ARCHITECT TO CHECK FLATWORK FORM BEFORE POURING CONCRETE. REFER TO SHEET G3.1 FOR EXISTING GRADES.
2. ALL SIDEWALKS / PORCHES / CONCRETE STOPS SHALL SLOPE MIN. 1/4" AWAY FROM ENTRANCES