



IFB – BICENTENNIAL HIKE & BIKE TRAIL (RE-BID)

PROJECT NO. 09-18-C35-336

BID OPENING DATE: September 27, 2018 at 3:00 p.m. CST

A D D E N D U M N O . 2

Prospective bidders are advised that for purposes of this project, all original bid requirements and Addendum No. 2 requirements as expressed herein shall be considered part of the bid package. As such, bidders are advised to recognize and comply with all aspects of this bid.

Bidders are advised of the following revisions:

REVISION: Revised L2 Sheet in response to Clarification Request No. 8.

CLARIFICATION REQUESTS AND RESPONSE:

NO.	COMPANY	DATE	QUESTION:	RESPONSE:
8	FR Green Thumb Landscaping LLC	09/19/2018	On the provided drawings Sabal palm and Mexican palm sizes are specified as (3" Cal. B&B, Strong Central Leader). On other projects palms are specified by height. Could you please verify the provided sizes and specify the height of the palms?	Sabal Palm and Mexican Palm tree trunks should be at a minimum height of four (4) feet. Updated L2 sheet will be provided with Addendum 2.

ALL OTHER SPECIFICATIONS SHALL REMAIN THE SAME.

Signature, Acknowledge Add. #1

Date

Company Name (Print/Type Name)

September 21, 2018
Date

Gerardo Noriega, CTPM,
Director of Purchasing & Contracting

GN/EV

All Addenda issued in respect to this project shall be considered official changes to the original bidding documents. It shall be the Bidder(s) responsibility to ensure that all Addenda have been received. Furthermore, bidders are advised that they must recognize, comply with, and attach a signed copy of each Addenda which shall be made part of their Bid Submittal. Bidder(s) signature on Addenda shall be interpreted as the vendor's "recognition and compliance to" official changes as outlined by the City of McAllen and as such are made part of the original bidding documents.

CSJ NO:
 DATE: 01/06/16
 SURVEYED BY: 00
 DESIGNED BY: 00
 DRAWN BY: 00
 CHECKED BY: 00
 PROJECT NO: 00-0000

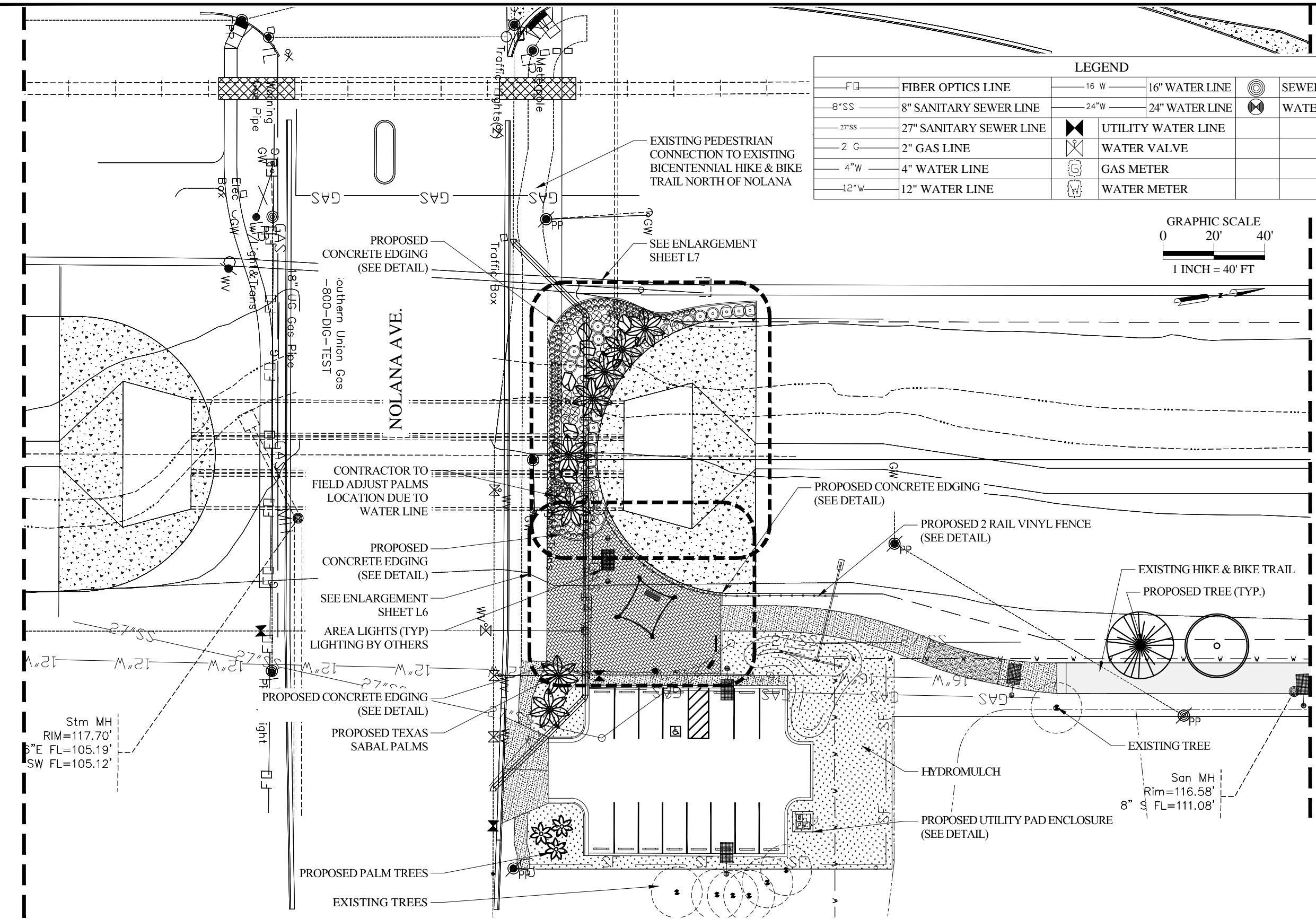
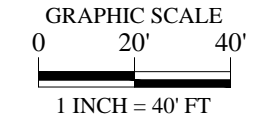
PROJECT:
 BICENTENNIAL HIKE & BIKE TRAIL
 BEAUTIFICATION PROJECT
 NOLANA AVE TO RR TRACKS
 LANDSCAPE IMPROVEMENTS
 SEG. NOLANA ST. TO STA. 12+00

CITY OF
McALLEN
 PARKS AND RECREATION DEPARTMENT

SCALE: HOR: 1" = 40'
 REVISIONS:
 1.
 2.
 3.
 4.
 SEAL:

SHEET NO: L2

LEGEND					
F	FIBER OPTICS LINE	16" W	16" WATER LINE	☉	SEWER MANHOLE
8"SS	8" SANITARY SEWER LINE	24" W	24" WATER LINE	⊕	WATER VALVE
27"SS	27" SANITARY SEWER LINE	⊕	UTILITY WATER LINE		
2" G	2" GAS LINE	⊕	WATER VALVE		
4" W	4" WATER LINE	⊕	GAS METER		
12" W	12" WATER LINE	⊕	WATER METER		



Stm MH
 RIM=117.70'
 6"E FL=105.19'
 SW FL=105.12'

San MH
 Rim=116.58'
 8" S FL=111.08'

SYMBOL	SCIENTIFIC NAME	COMMON NAME	QTY	SIZE & COMMENTS
	PITHECELLOBIUM FLEXICAULE	EBONY TREE	1	3" CAL. B&B, STRONG CENTRAL LEADER
	ULMUS CRASSIFOLIA	CEDAR ELM	1	3" CAL. B&B, STRONG CENTRAL LEADER
	SABAL PALMETTO	SABAL PALM	8	MIN. HEIGHT 4'
	WASHINGTONIA ROBUSTA	MEXICAN PALM	3	MIN. HEIGHT 4'

SYMBOL	DESCRIPTION	QTY
	VINYL FENCE	107 LF
	UTILITY PAD ENCLOSURE	1
	AREA LIGHTS	4
	AREA LIGHTS	1
	BENCH	1

BIOSWALE GRASS MIX	
COMMON NAME	SCIENTIFIC NAME
ALAMO SWITCHGRASS	PANICUM VIRGATUM 'ALAMO'
LAVACA CANADA WILDRYE	ELYMUS CANADENSIS VAR. CANADENSIS
BUSHY BLUESTEM	ANDROPOGON GLOMERATUS
PLAINS COREOPSIS	COREOPSIS TINCTORIA

SYMBOL	DESCRIPTION	QTY
	6" LANDSCAPE CONCRETE CURB	176 LF

LAYOUT NAME: L2
 DATE: AUG 07, 2018 - 4:05PM
 LAST SAVED: AUG 07, 2018 - 4:05PM
 DRAWING FILE: H:\BICENTENNIAL\2017-BICENTENNIAL NOLANA TO RR TRACKS\CAD FILES\LANDSCAPE\L2.L2.dwg