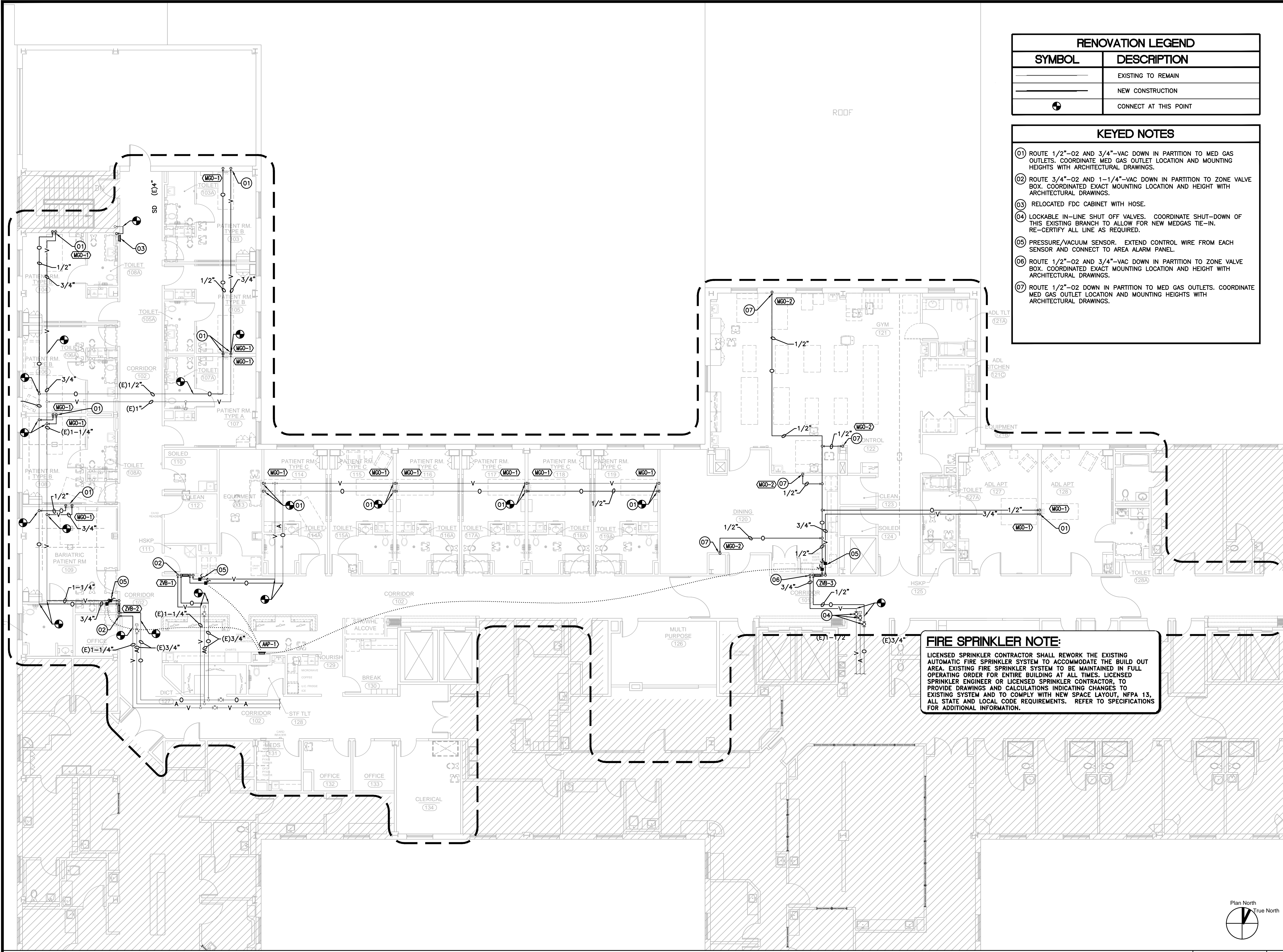


Sep 06, 2018 - 9:19am
 M:\2018\18022 HCA RGRH Inpatient Rehab\Drawings\18022_P3.01_FLOOR PLAN - MED GAS AND FIRE PROTECTION.dwg
 aqurinez



RENOVATION LEGEND	
SYMBOL	DESCRIPTION
	EXISTING TO REMAIN
	NEW CONSTRUCTION
	CONNECT AT THIS POINT

- KEYED NOTES**
- 01 ROUTE 1/2"-O2 AND 3/4"-VAC DOWN IN PARTITION TO MED GAS OUTLETS. COORDINATE MED GAS OUTLET LOCATION AND MOUNTING HEIGHTS WITH ARCHITECTURAL DRAWINGS.
 - 02 ROUTE 3/4"-O2 AND 1-1/4"-VAC DOWN IN PARTITION TO ZONE VALVE BOX. COORDINATED EXACT MOUNTING LOCATION AND HEIGHT WITH ARCHITECTURAL DRAWINGS.
 - 03 RELOCATED FDC CABINET WITH HOSE.
 - 04 LOCKABLE IN-LINE SHUT OFF VALVES. COORDINATE SHUT-DOWN OF THIS EXISTING BRANCH TO ALLOW FOR NEW MEDGAS TIE-IN. RE-CERTIFY ALL LINE AS REQUIRED.
 - 05 PRESSURE/VACUUM SENSOR. EXTEND CONTROL WIRE FROM EACH SENSOR AND CONNECT TO AREA ALARM PANEL.
 - 06 ROUTE 1/2"-O2 AND 3/4"-VAC DOWN IN PARTITION TO ZONE VALVE BOX. COORDINATED EXACT MOUNTING LOCATION AND HEIGHT WITH ARCHITECTURAL DRAWINGS.
 - 07 ROUTE 1/2"-O2 DOWN IN PARTITION TO MED GAS OUTLETS. COORDINATE MED GAS OUTLET LOCATION AND MOUNTING HEIGHTS WITH ARCHITECTURAL DRAWINGS.

FIRE SPRINKLER NOTE:
 LICENSED SPRINKLER CONTRACTOR SHALL REWORK THE EXISTING AUTOMATIC FIRE SPRINKLER SYSTEM TO ACCOMMODATE THE BUILD OUT AREA. EXISTING FIRE SPRINKLER SYSTEM TO BE MAINTAINED IN FULL OPERATING ORDER FOR ENTIRE BUILDING AT ALL TIMES. LICENSED SPRINKLER ENGINEER OR LICENSED SPRINKLER CONTRACTOR, TO PROVIDE DRAWINGS AND CALCULATIONS INDICATING CHANGES TO EXISTING SYSTEM AND TO COMPLY WITH NEW SPACE LAYOUT, NFPA 13, ALL STATE AND LOCAL CODE REQUIREMENTS. REFER TO SPECIFICATIONS FOR ADDITIONAL INFORMATION.

3rd Floor INPATIENT REHAB UNIT

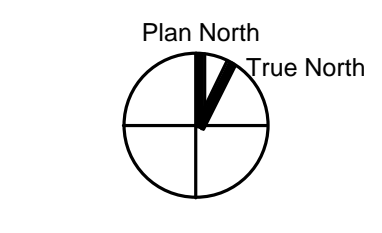
FOR INTERIM REVIEW ONLY
 THIS DOCUMENT IS RELEASED FOR THE PURPOSE OF INTERIM REVIEW ONLY, UNDER THE AUTHORITY OF:
 Name: GREG W. MERCER
 P.E. No. 114431
 DATE: 09/06/2018
 AND IS NOT INTENDED TO BE USED FOR BIDDING OR CONSTRUCTION PURPOSES.

REVISIONS

NO.	ISSUE	DATE

Sheet Information	
DATE	09/06/2018
JOB NUMBER	18302
TITLE	FLOOR PLAN - MED GAS AND FIRE PROTECTION
SHEET	P3.01

FLOOR PLAN - MED GAS AND FIRE PROTECTION



1/8" = 1'-0" 1