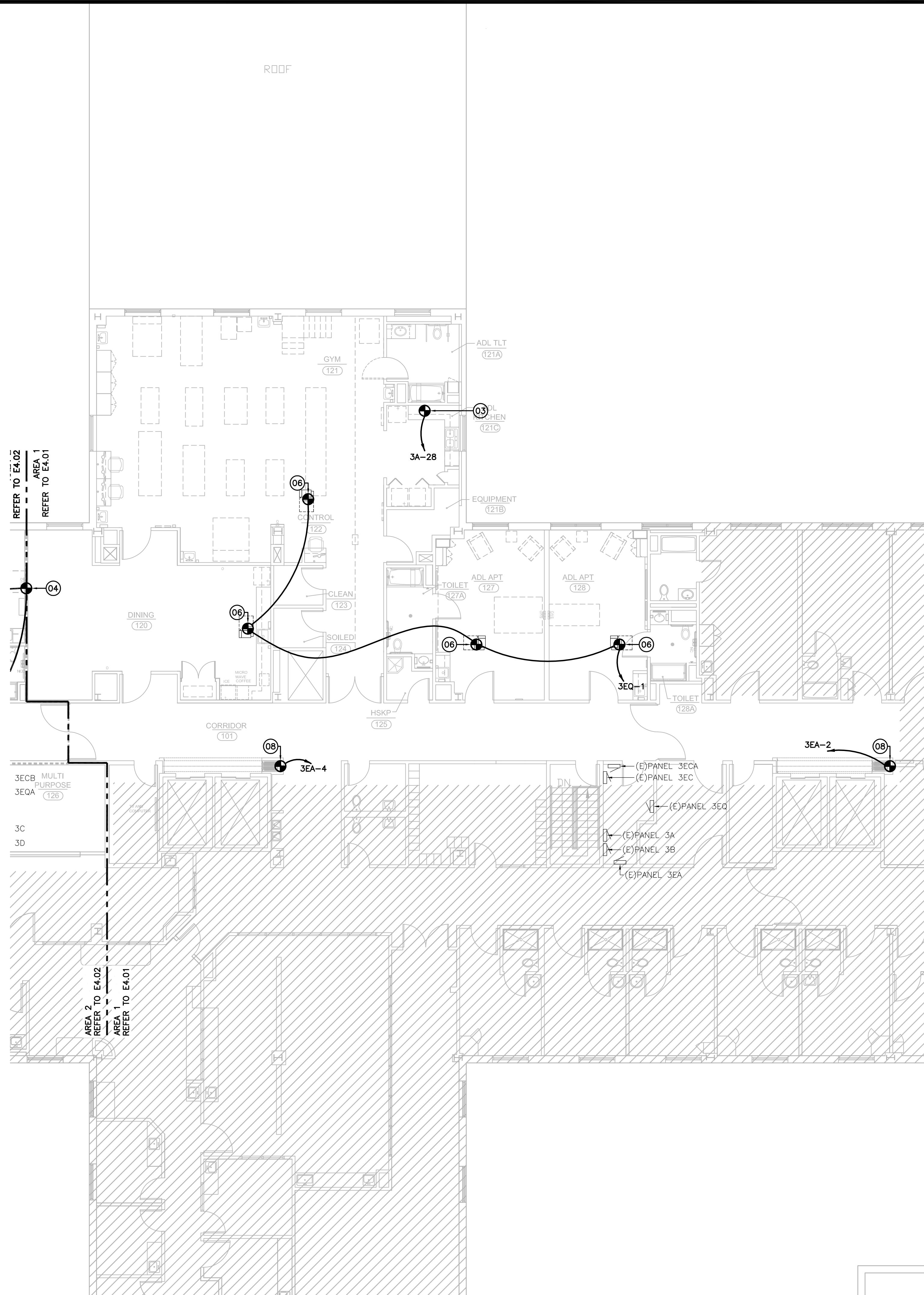


Sep 06, 2018 - 9:25am
 M:\2018\18022 HCA RGRH Inpatient Rehab\Drawings\Elect\E4_01_FLOOR PLANS - EQUIPMENT POWER.dwg
 crothlauf



RENOVATION LEGEND	
SYMBOL	DESCRIPTION
---	EXISTING TO REMAIN "(E)"
---	RELOCATED "(R)"
---	NEW CONSTRUCTION

- GENERAL EQUIPMENT POWER NOTES**
- REFER TO THE GENERAL NOTES ON THE INFORMATION SHEET FOR ADDITIONAL INFORMATION.
 - REFER TO ARCHITECTURAL DRAWINGS FOR ADDITIONAL INFORMATION.
 - REFER TO THE MECHANICAL AND/OR PLUMBING PLANS FOR EXACT EQUIPMENT LOCATIONS. EQUIPMENT LOCATIONS SHOWN ON THE ELECTRICAL PLANS ARE FOR REFERENCE ONLY.
 - ALL PANELBOARDS ARE EXISTING TO REMAIN UNLESS INDICATED OTHERWISE.
 - PROVIDE PERMANENT AFFIXED NAMEPLATES ON ALL ELECTRICAL EQUIPMENT ENCLOSURES OR HOUSINGS THAT ARE PART OF THE SCOPE OF WORK UNLESS NOTED OTHERWISE.
 - ALL ELECTRICAL EQUIPMENT SHALL BE INSTALLED PER THE NEC REQUIRED CLEARANCES. THE WORKING/SPACE CLEARANCES SHALL BE AT A MINIMUM OF 4FT. IN FRONT OF THE EQUIPMENT AND 6FT. ABOVE (OR AS INDICATED PER THE NEC). PRIOR TO THE ELECTRICAL CONTRACTOR BID PROCESS, VERIFY THAT ALL ELECTRICAL CLEARANCES ARE MET BY OBTAINING THE EQUIPMENT DIMENSIONS FROM A MANUFACTURER AND GRAPHICALLY POSITION SCALED EQUIPMENT FIGURES INTO THE ELECTRICAL ROOMS DRAWINGS AND OTHER AREAS. CONSIDER ALL CEILING HEIGHT LIMITATIONS. PRIOR TO THE START OF ANY CONSTRUCTION, NOTIFY THE ENGINEER IN A WRITTEN MANNER IF ANY DISCREPANCIES ARE FOUND.
 - COORDINATE ANY ROOF PENETRATION WITH OTHER TRADES. ALL ROOF PENETRATIONS SHALL BE PROPERLY SEALED IN ORDER TO PREVENT WATER LEAKAGE.
 - COORDINATE THE LOCATION, MOUNTING HEIGHT, AND ORIENTATION OF ALL ELECTRICAL DEVICES AND OUTLETS WITH ALL OTHER TRADES PRIOR TO ROUGH-IN AND/OR INSTALLATION.
 - REFER TO THE MECHANICAL DRAWINGS TO VERIFY EQUIPMENT REQUIRING SINGLE POINT CONNECTION. IF SINGLE POINT CONNECTION IS PRESENT, CONFIRM EXACT LOCATION OF CONNECTION WITH MANUFACTURER.
 - THE WIRING BETWEEN EQUIPMENT SHALL INDICATE THAT THE CONNECTED EQUIPMENT SHARE A COMMON CIRCUIT BREAKER. REFER TO THE EQUIPMENT CONNECTION SCHEDULE FOR THE CIRCUIT BREAKER SIZE, CIRCUIT SIZE, AND PANEL SOURCE IDENTIFICATION. THE CIRCUIT HOMERUN TO THE PANEL OR SUPPLY SOURCE SHALL BE MADE FROM THE MIDDLE OF THE CONNECTED EQUIPMENT, AS TO MINIMIZE THE VOLTAGE DROP. THE EQUIPMENT SHALL BE WIRED IN A MANNER IN WHICH EACH PIECE OF EQUIPMENT CAN BE DISCONNECTED INDEPENDENTLY FROM THE CIRCUIT WITHOUT AFFECTING ANY DOWNSTREAM OR UPSTREAM CONNECTED DEVICES/EQUIPMENT.
 - REFER TO THE MECHANICAL PLANS AND VERIFY WHICH EQUIPMENT REQUIRES A BAS CONNECTION. PROVIDE ALL NEW NECESSARY WIRING, CONDUIT, CONNECTIONS, AND TERMINATIONS FROM THE EQUIPMENT TO THE BUILDING AUTOMATION SYSTEM CONTROL PANEL. ALL WIRING SHALL BE IN CONDUIT.
 - DO NOT PENETRATE ANY EQUIPMENT UNIT HOUSINGS. PENETRATIONS SHALL ONLY BE ALLOWED IF MADE INTO THE EQUIPMENT MANUFACTURER'S PROVIDED KNOCK-OUTS OR OPENINGS.

- EQUIPMENT POWER KEYED NOTES**
- PROVIDE POWER CONNECTION TO CARD READER ACCESS DOOR. VERIFY AND COORDINATE REQUIREMENTS.
 - PROVIDE POWER CONNECTION TO MEDICAL GAS ALARM PANEL. VERIFY AND COORDINATE REQUIREMENTS.
 - PROVIDE POWER CONNECTION TO RANGE HOOD. VERIFY AND COORDINATE REQUIREMENTS.
 - PROVIDE POWER CONNECTION TO FIRE/SMOKE DAMPER. VERIFY AND COORDINATE REQUIREMENTS.
 - PROVIDE POWER CONNECTION TO MOTORIZED DAMPER. VERIFY AND COORDINATE REQUIREMENTS.
 - PROVIDE POWER CONNECTION TO TERMINAL UNIT CONTROLS. VERIFY AND COORDINATE REQUIREMENTS.
 - PROVIDE POWER CONNECTION TO AHU UV LIGHTS, MARINE LIGHTS, AND RECEPTACLE. VERIFY AND COORDINATE REQUIREMENTS.
 - PROVIDE POWER CONNECTION TO WON FIRE DOOR. VERIFY AND COORDINATE REQUIREMENTS.

HEITKAMP SWIFT ARCHITECTS
 Architecture • Interiors • Planning
 1165 BRITTMOORE RD.
 HOUSTON, TEXAS 77043
 (T) 713.626.4300
 (F) 713.626.4301

in association with:
GF Garner-Fritzsche ENGINEERING, INC.
 8554 Katy Freeway, Suite 101, Houston, TX 77024
 713.432.1422 • Fax 713.432.1253
 www.garnerfritzsche.com
 Texas Reg. No. F-5712
 GFE Project No. 18022

{b} bennett design group
 1165 Brittmoores Rd.
 Houston, Texas 77043
 p: 713.850.8833 f: 713.850.0383

Rio Grande REGIONAL HOSPITAL
 An HCA Affiliated Hospital

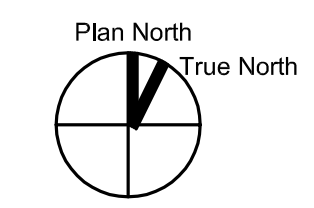
3rd Floor INPATIENT REHAB UNIT

FOR INTERIM REVIEW ONLY
 THIS DOCUMENT IS RELEASED FOR THE PURPOSE OF INTERIM REVIEW ONLY UNDER THE AUTHORITY OF:
 Name: GREG W. MERCIER
 P.E. No. 114431
 DATE: 09/06/2018
 AND IS NOT INTENDED TO BE USED FOR BIDDING OR CONSTRUCTION PURPOSES.

REVISIONS

NO.	ISSUE	DATE

SHEET
PARTIAL FLOOR PLAN - EQUIPMENT POWER - AREA 1



PARTIAL FLOOR PLAN - EQUIPMENT POWER - AREA 1

1/8" = 1'-0" 1

E4.01
 ISSUED FOR PRICING ONLY
 Copyright © 2018 Heitkamp Swift Architects