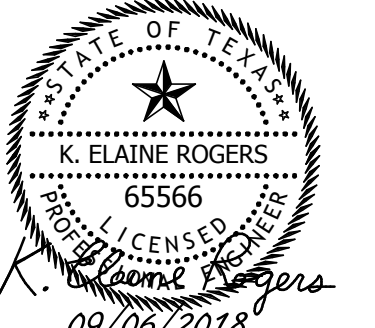


3rd Floor
INPATIENT
REHAB UNIT

Henderson Rogers
 Structural Engineers, LLC
 TBPE Firm Registration No. 8755



REVISIONS

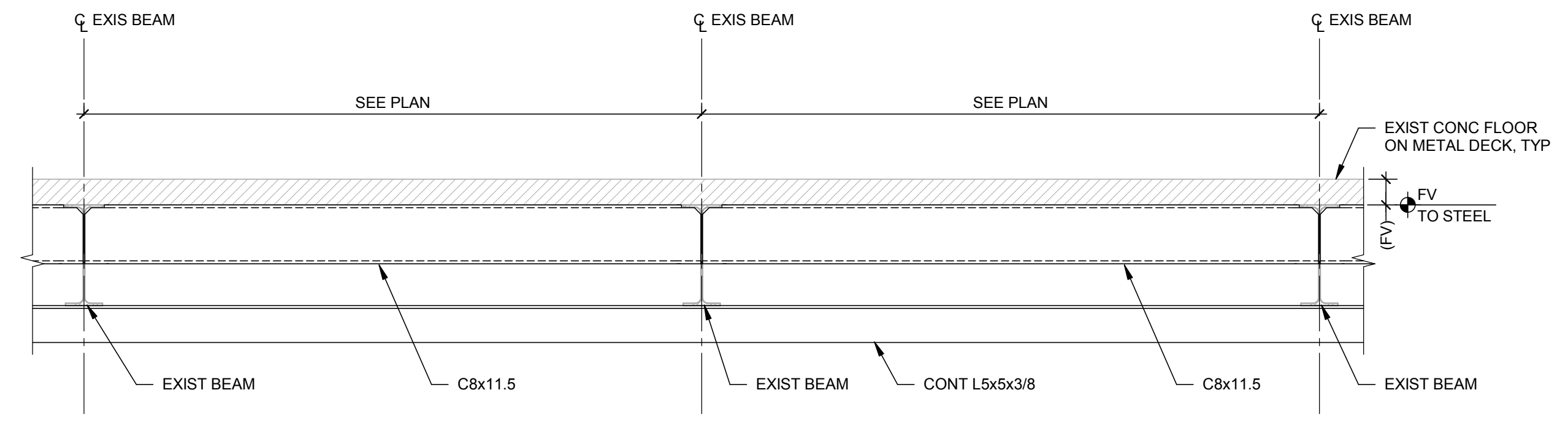
NO.	ISSUE	DATE
1	ISSUED FOR BID	09/06/2018

Sheet Information
 DATE 09/06/2018
 JOB NUMBER 18302
 TITLE

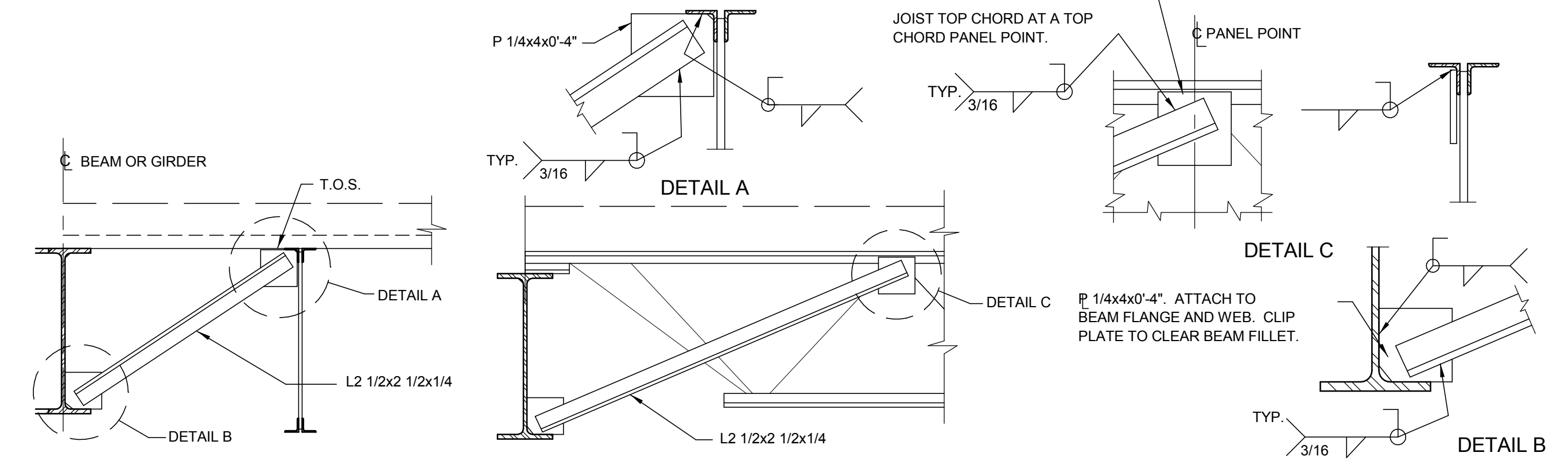
FRAMING DETAILS

SHEET

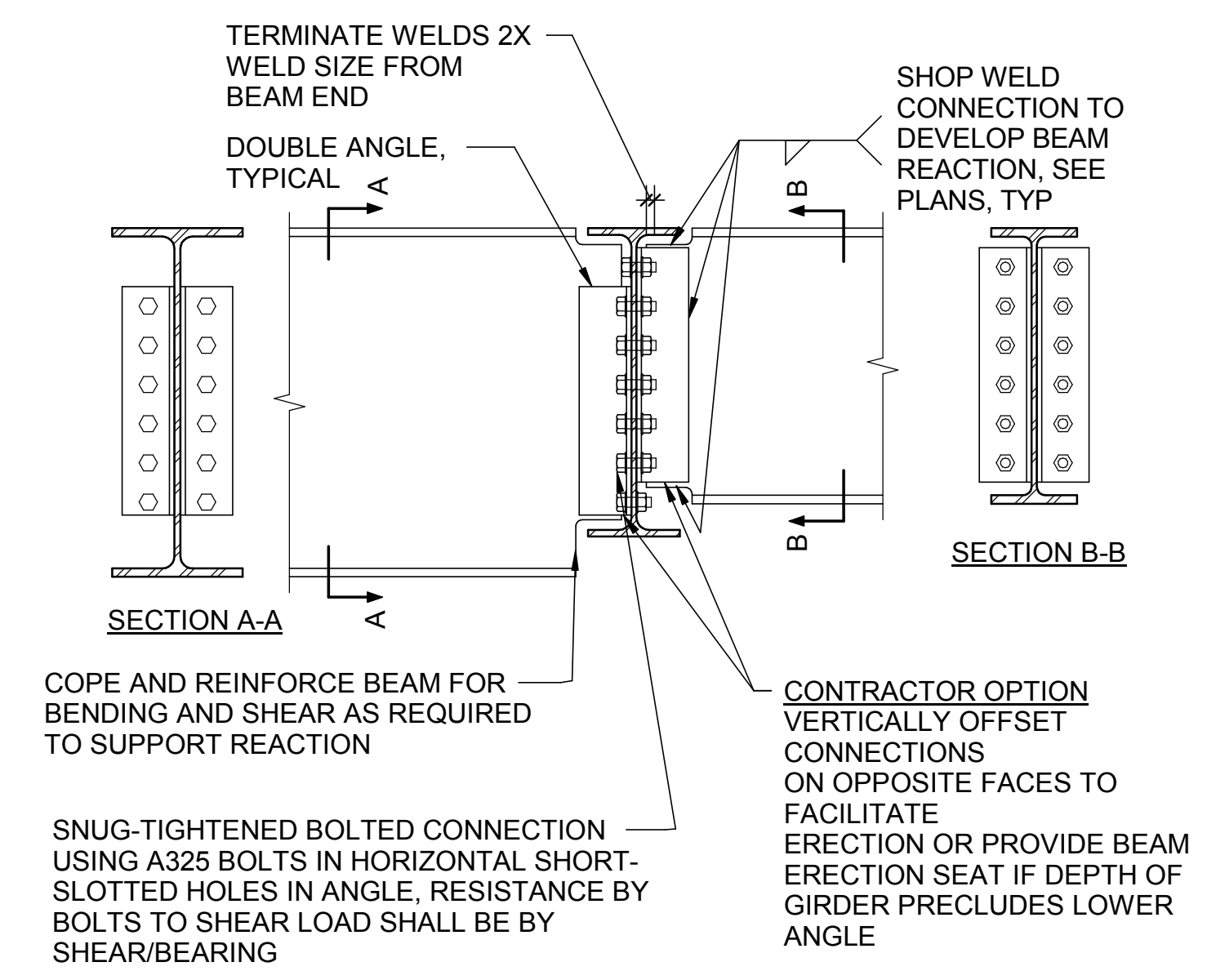
S3.01
 ISSUED FOR BID



2 JOIST BRACING
 3/4" = 1'-0"

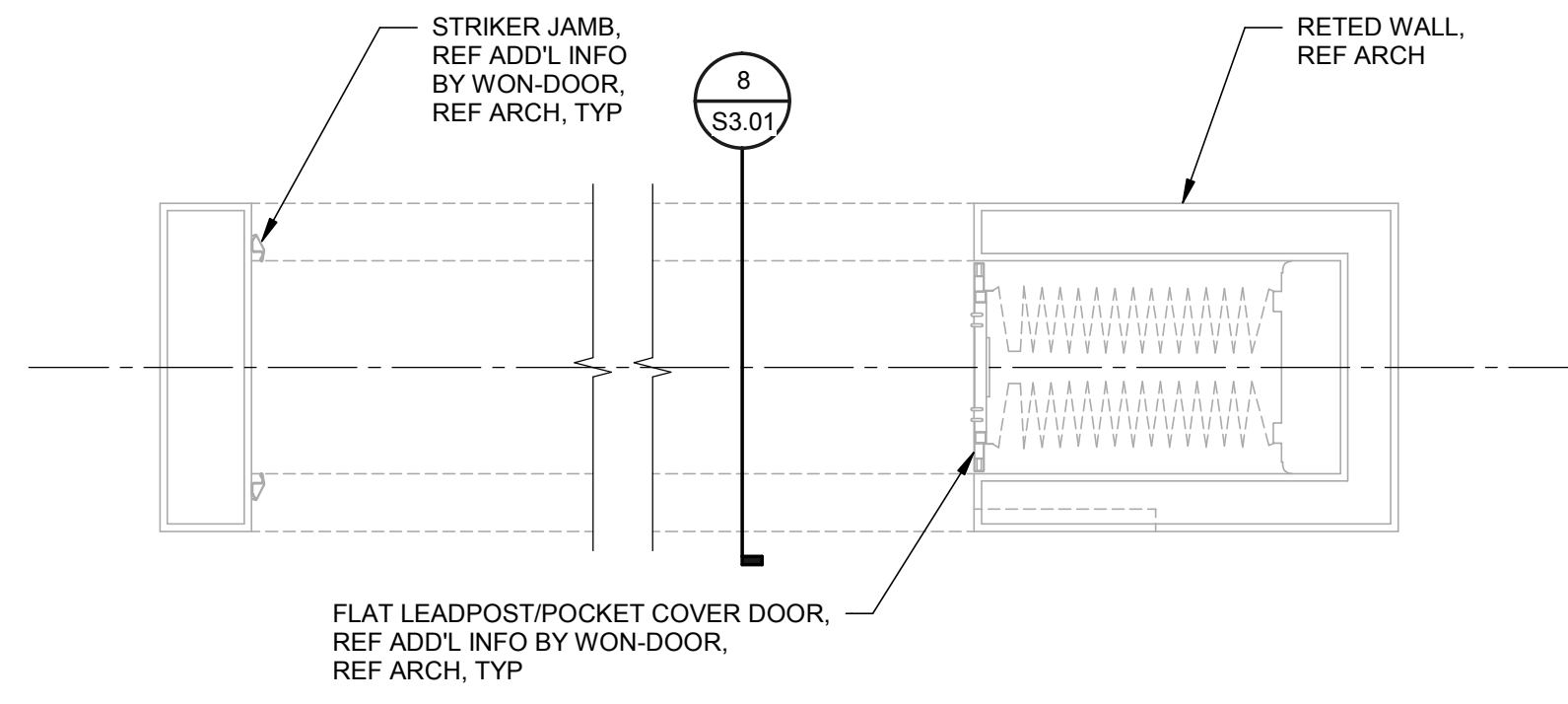


4 TYPICAL BRACING ANGLE CONNECTION
 3/4" = 1'-0"



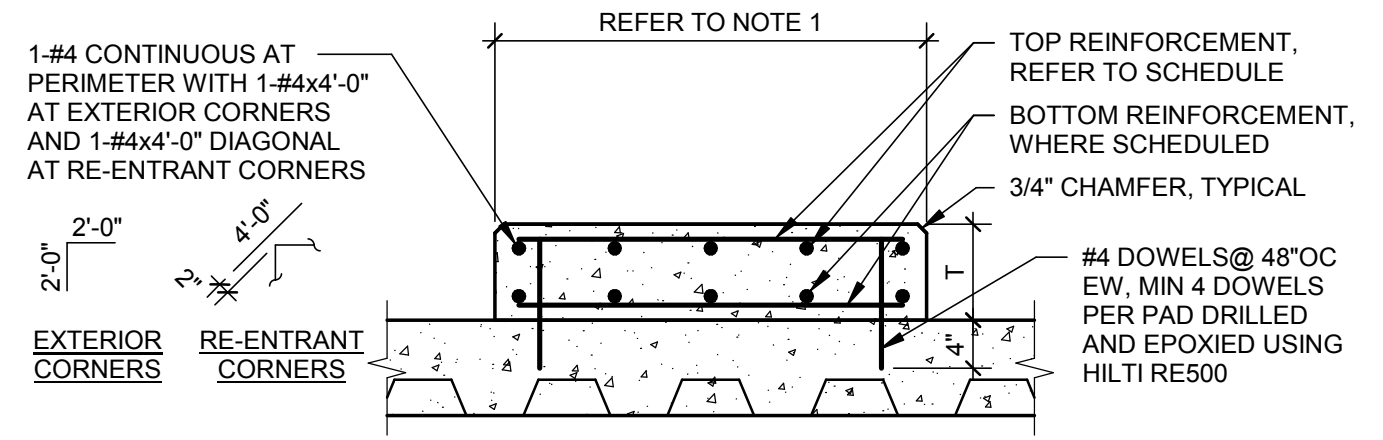
- NOTES:**
- REFER TO SPECIFICATIONS FOR CONNECTION DESIGN CRITERIA.
 - PROVIDE PREDESIGNED CONNECTIONS AS SHOWN IN AMERICAN INSTITUTE OF STEEL CONSTRUCTION MANUAL WHERE APPLICABLE.

5 TYPICAL BEAM-TO-BEAM SHEAR CONNECTION
 NO SCALE



8 SECTION AT WON DOOR ASSEMBLY
 3/4" = 1'-0"

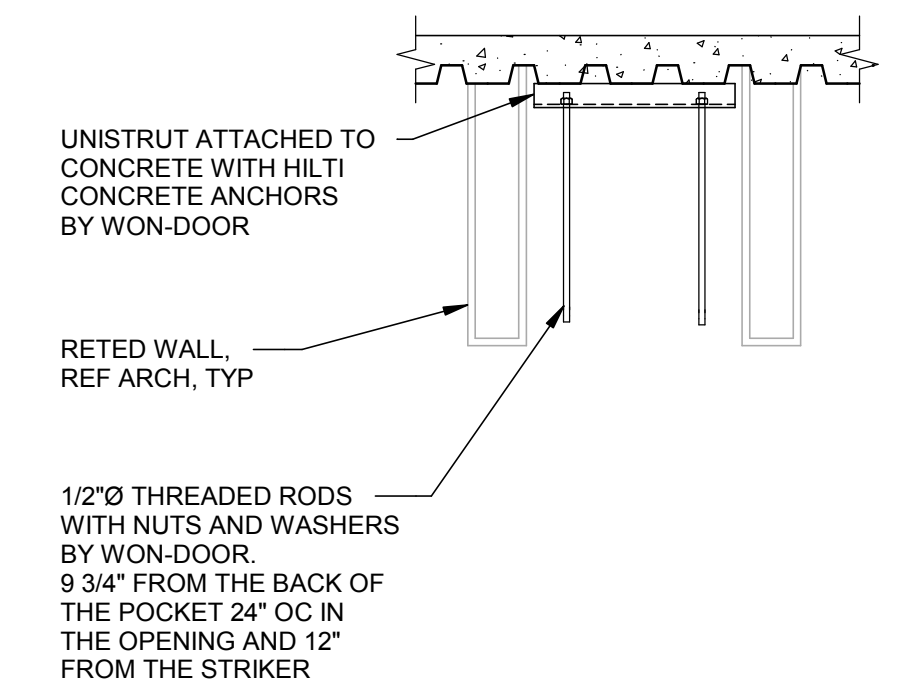
7 WON DOOR ASSEMBLY
 3/4" = 1'-0"



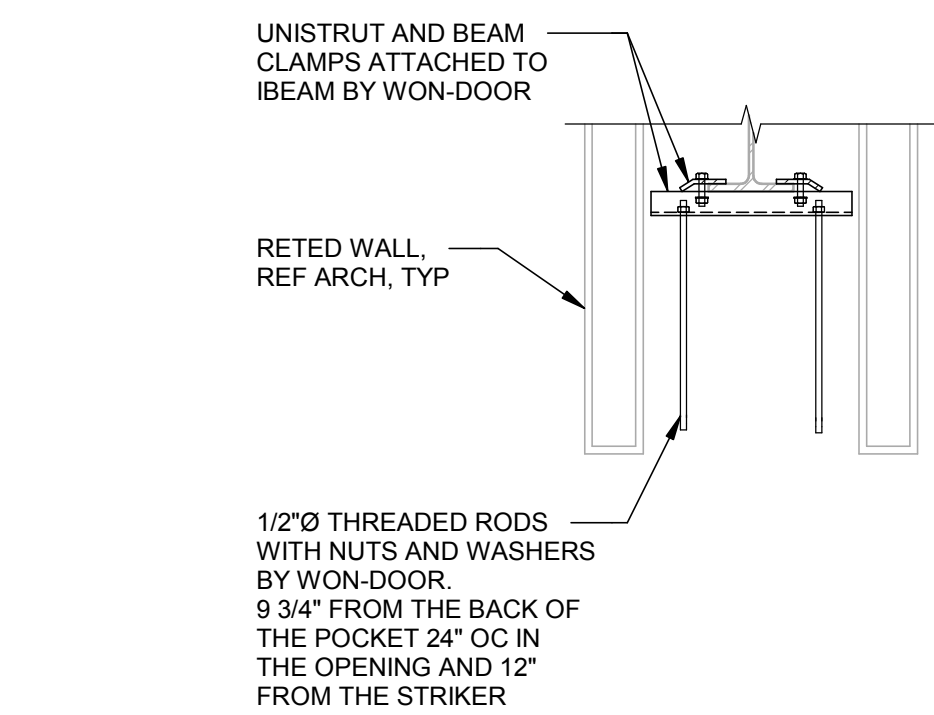
PAD THICKNESS	TOP REINFORCEMENT	BOTTOM REINFORCEMENT
T = 4"	WWR 4x4-W2.9xW2.9 OR #3@12" EACH WAY	NONE
4" < T ≤ 6"	WWR 4x4-W4xW4 OR #4@18" EACH WAY	NONE
6" < T ≤ 8"	WWR 4x4-W6xW6 OR #4@12" EACH WAY	NONE
8" < T ≤ 12"	#4@18" EACH WAY	#4@18" EACH WAY
12" < T ≤ 16"	#4@12" EACH WAY	#4@12" EACH WAY

- NOTES:**
- REFER TO ARCHITECTURAL, STRUCTURAL OR MEP DRAWINGS FOR HOUSEKEEPING PAD PLAN DIMENSIONS AND THICKNESS (4" MINIMUM THICKNESS).
 - CONTRACTOR SHALL COORDINATE DIMENSIONS AND OTHER SPECIAL REQUIREMENTS WITH EQUIPMENT MANUFACTURERS AND PROVIDE WHERE REQUIRED WHETHER SHOWN ON STRUCTURAL DRAWINGS OR NOT.
 - MAKE SURE TO LOCATE DOWELS WITHIN THE VALLEYS OF THE DECK.

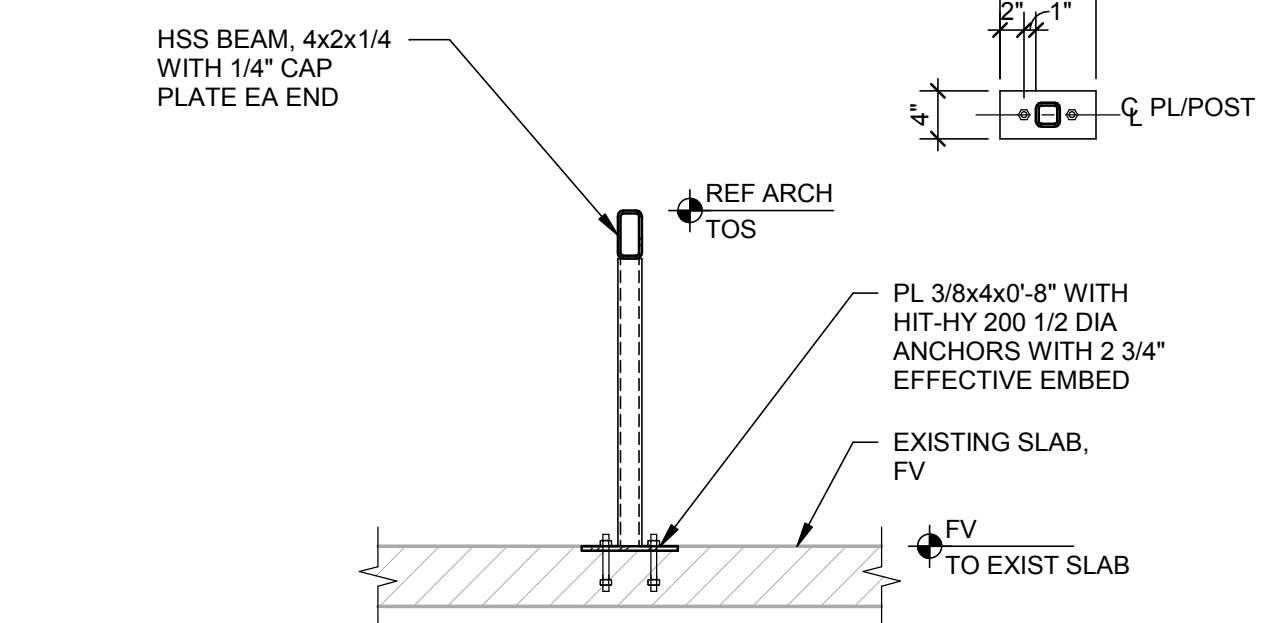
11 HOUSEKEEPING PAD OVER COMPOSITE DECK
 NO SCALE



10 WON DOOR SECTION FOR MOUNTING TO COMPOSITE DECK
 3/4" = 1'-0"



9 WON DOOR SECTION FOR MOUNTING TO BOTTOM OF WIDE FLANGE BEAM
 3/4" = 1'-0"



12 SECTION
 3/4" = 1'-0"