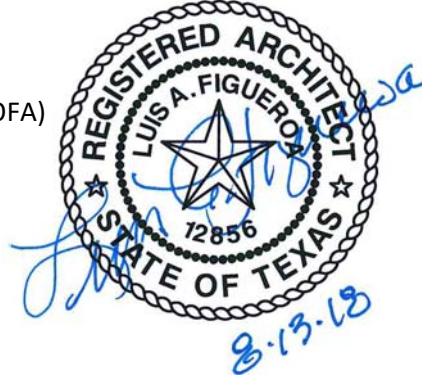


DOCUMENT 009113 – ADDENDA (NUMBER-7)

1.1 PROJECT INFORMATION

- A. Project Name: TROPICAL TEXAS BEHAVIORAL HEALTH PHASE I AND PHASE II BUILDING RENOVATIONS AND ADDITIONS
- B. Owner: Tropical Texas Behavioral Health
- C. Architect: Rike-Ogden-Figueroa-Alex Architects, Inc. (ROFA)
- D. Architect Project Number: 2017.16.
- E. Date of Addendum: August 13, 2018.



1.2 NOTICE TO BIDDERS

- A. This Addendum is issued to all registered plan holders pursuant to the Instructions to Bidders and Conditions of the Contract. This Addendum serves to clarify, revise, and supersede information in the Project Manual, Drawings, and previously issued Addenda. Portions of the Addendum affecting the Contract Documents will be incorporated into the Contract by enumeration of the Addendum in the Owner/Contractor Agreement.
- B. The Bidder shall acknowledge receipt of this Addendum in the appropriate space on the Bid Form.
- C. The date for receipt of proposals is unchanged by this Addendum, at same time and location.

1. Proposal Submittal Date: Tuesday, August 14, 2018 ΔΔ

1.3 ATTACHMENTS

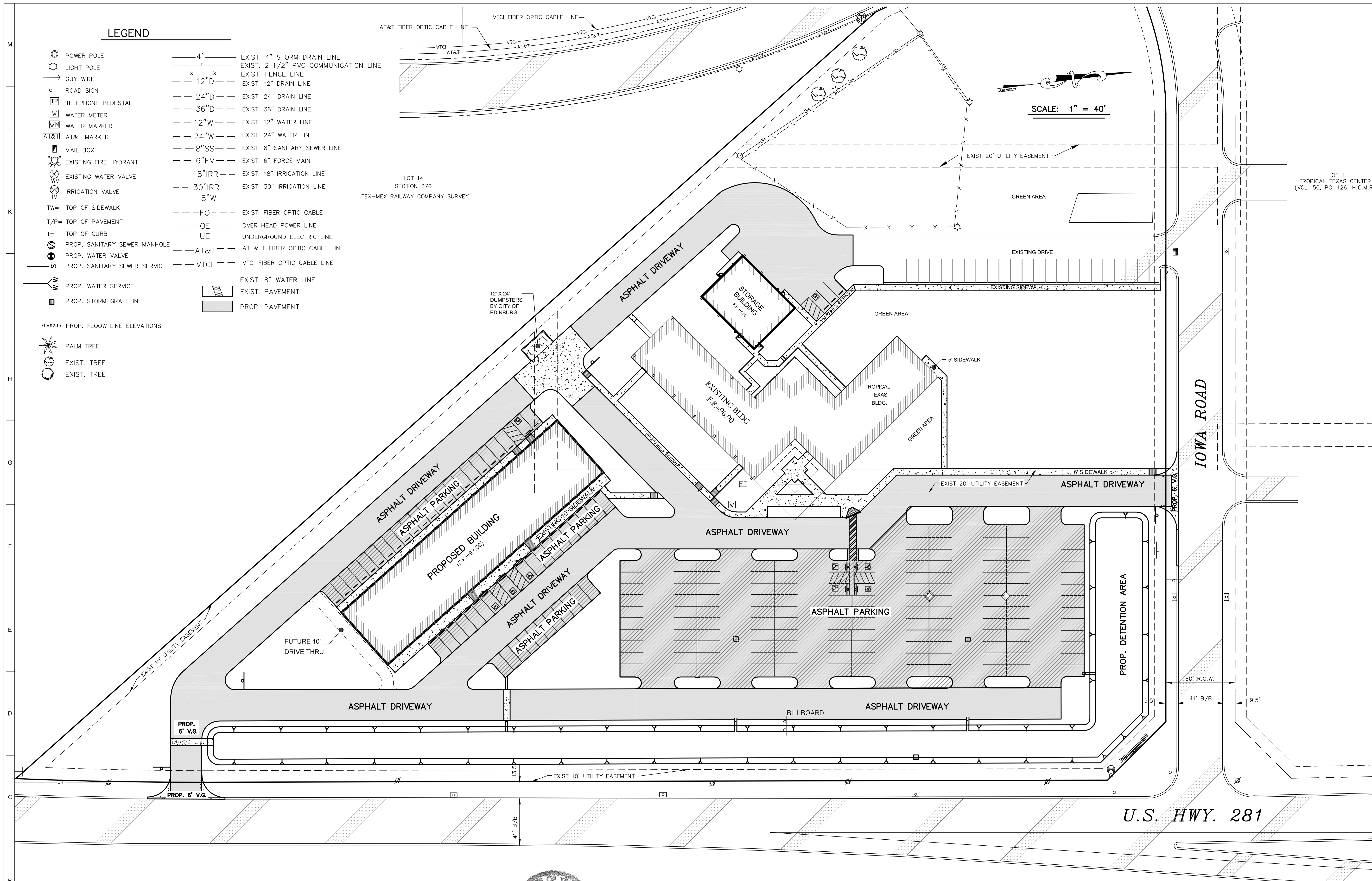
- A. This Addendum includes attachments:
 - 1. 2 – 8.5x11 Letter size sheets. (Documents/Specifications)
 - 2. 1 – 24x36 Arch-D size sheets. (Drawings)
- B. This Addendum includes the following attached Sheets:
 - 1. Civil Sheet C2A, dated 08/13/2018, (new).

END OF DOCUMENT 009113

LEGEND

- ⊙ POWER POLE
- ⊙ LIGHT POLE
- GUY WIRE
- ⊙ ROAD SIGN
- ⊙ TELEPHONE PEDESTAL
- ⊙ WATER METER
- ⊙ WATER MARKER
- ⊙ AT&T MARKER
- ⊙ MAIL BOX
- ⊙ EXISTING FIRE HYDRANT
- ⊙ EXISTING WATER VALVE
- ⊙ IRRIGATION VALVE
- TW= TOP OF SIDEWALK
- T/P= TOP OF PAVEMENT
- T= TOP OF CURB
- ⊙ PROP. SANITARY SEWER MANHOLE
- ⊙ PROP. WATER VALVE
- ⊙ PROP. SANITARY SEWER SERVICE
- ⊙ PROP. WATER SERVICE
- ⊙ PROP. STORM GRATE INLET
- FL=92.15 PROP. FLOOD LINE ELEVATIONS
- ⊙ PALM TREE
- ⊙ EXIST. TREE
- ⊙ EXIST. TREE

- 4" — EXIST. 4" STORM DRAIN LINE
- 1" — EXIST. 2 1/2" PVC COMMUNICATION LINE
- x — EXIST. FENCE LINE
- 12"D — EXIST. 12" DRAIN LINE
- 24"D — EXIST. 24" DRAIN LINE
- 36"D — EXIST. 36" DRAIN LINE
- 12"W — EXIST. 12" WATER LINE
- 24"W — EXIST. 24" WATER LINE
- 8"SS — EXIST. 8" SANITARY SEWER LINE
- 6"FM — EXIST. 6" FORCE MAIN
- 18"IRR — EXIST. 18" IRRIGATION LINE
- 30"IRR — EXIST. 30" IRRIGATION LINE
- 8"W —
- FO — EXIST. FIBER OPTIC CABLE
- OE — OVER HEAD POWER LINE
- UE — UNDERGROUND ELECTRIC LINE
- AT&T — AT & T FIBER OPTIC CABLE LINE
- VTCI — VTCI FIBER OPTIC CABLE LINE
- EXIST. 8" WATER LINE
- EXIST. PAVEMENT
- PROP. PAVEMENT



SCALE: 1" = 40'



McAllen
 1007 Walnut Ave.
 McAllen, Texas 78501
 V. 956.686.7771
 F. 956.687.3433
 www.rofainc.com

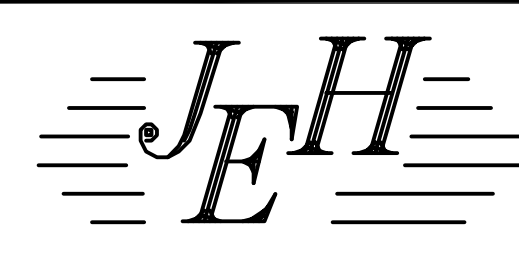
McAllen Harlingen
 COPYRIGHT ROFA ARCHITECTS 2018
 CONSULTANTS:

NO.	DATE	DESCRIPTION
1.	7/25/18	ADDENDUM NO.2
2.	7/31/18	ADDENDUM NO.4

PHASE I & PHASE II BUILDING RENOVATIONS AND ADDITIONS
 TROPICAL TEXAS BEHAVIORAL HEALTH
 Texas
 Edinburg.

PROJECT NO:	2017.16
DATE:	6/26/2018 3:56:04 PM
STARTING DATE:	
CK BY/Checker:	DWN BY: Author
PROJECT No:	180105
DATE:	JULY 8, 2018
DRAWN BY:	LHDZ
CHECKED BY:	JH

C-2A



JAVIER HINOJOSA ENGINEERING
 CONSULTING ENGINEERS
 416 E. DOVE AVENUE McALLEN, TEXAS 78504
 PHONE (956) 668-1588
 javhin@rgv.rr.com
 TBPE FIRM No. F-1295



J. Hinojosa
 8/13/18

LEGEND:

- ▭ ASPHALT DRIVEWAY
- ▨ ASPHALT PARKING

PROPOSED PAVING LAYOUT