

ADDENDUM NUMBER TWO

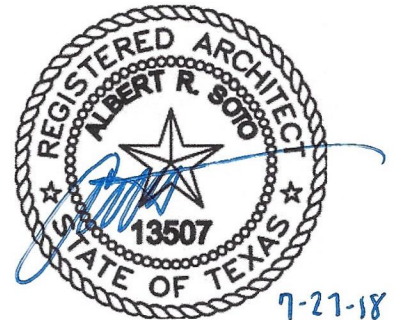
DATE July 27, 2018

TO THE PLANS AND SPECIFICATIONS FOR:

PAGE 1 OF 10 PAGES

RENOVATIONS AT ADMINISTRATION BUILDING
SANTA ROSA INDEPENDENT SCHOOL DISTRICT
SANTA ROSA, TEXAS

LAMARR WOMACK & ASSOCIATES, LP
711 N. CARANCAHUA, SUITE 404
CORPUS CHRISTI, TX 78401
361/884-7442 FAX: 361/883-1612



This addendum is generally separated into sections for convenience; however, all contractors, subcontractors, materialmen, and other parties shall be responsible for reading the entire addendum. The failure to list an item or items in all affected sections of this addendum does not relieve any party affected from performing as per instructions, providing that the information is set forth any time, any place in this addendum. These documents shall be attached to and become a part of the contract documents for this project.

CLARIFICATION ITEMS

- Item C-1 Section 00020 – Invitation to Offerors – CHANGE Date and Time for Receipt of the Competitive Sealed Proposal from August 2, 2018 at 3:00 P.M. CST **TO** August 21, 2018 at 3:00 P.M. CST.
- Item C-2 Section 00300 – Competitive Sealed Proposal – CHANGE Date and Time for the Receipt of the Competitive Sealed Proposal from August 2, 2018 at 3:00 P.M. CST **TO** August 21, 2018 at 3:00 P.M. CST.
- Item C-3 Section 01020 – Allowances, 1.6 Roof Repair, per Addendum Number One – CHANGE lump sum from \$ 3,000.00 **TO** \$ 9,000.00.

SPECIFICATION ITEMS

- Item S-1 Section 075113.13 Built-Up Asphalt Roofing, Cold-Applied – ADD the attached specification section **AND** 6 pages to the Table of Contents.
- Item S-2 Section 101416 – Plaques, 2.3 Plaques, A. – CHANGE Refer to sheet A900 **TO** Refer to Sheet A003.

PLAN ITEMS

- Item P-1 Sheet A100 Site Plan, 1 Site Plan – For the existing high wall above the roof that separates the Administration from the Existing High School Building – ADD note To provide repairs at existing base flashing.

- Item P-2 Sheet A100 Site Plan, Site Plan Keyed Notes, Note 19 – **ADD** the following:
- A. Spud gravel at base flashing at raised intersecting wall of high school. Prime existing substrate with specified asphalt primer. Install in cold process new modified bitumen base flashing. Ensure all base flashing extends a minimum of 8" into field of roof, secure new modified bitumen base flashing to existing substrate and provide additional counter flashing to existing. Provide 3-course vertical striping at all vertical laps. Reinstall new gravel as required to complete repairs in cold process. Install new urethane based caulk at top of surface mounted counter flashing located below brick lintel.
 - B. Spud gravel at all mechanical curb corners as required to install new 3-course striping.
 - C. Install new 3-course striping at perimeter of all scupper locations.
 - D. Provide 3-course striping at all perimeter base flashing open laps, punctures, tears, splits or other deficiencies.
 - E. Install new aluminum coating at all new 3-course striping repairs.
 - F. Provide 8 hours min of water testing at intersecting wall to verify leaks are repaired or identify additional work needed.
 - G. Address all rooftop pitch pans. Refill and seal existing bonnets.
- Item P-3 Sheet A200 Floor Plan, 1 Floor/Fixture Plan, Rooms A136 Executive Session, A130 Secretary, A131 Superintendent – **REVISE** locations of Doors and Walls, refer to attached page AD2-1.
- Item P-4 Sheet A200 Floor Plan, 1 Floor/Fixture Plan, Room A125 Classroom – **REVISE** Location of Door and Wall, refer to attached page AD2-2.

SECTION 075113.13 - BUILT-UP ASPHALT ROOFING, COLD-APPLIED

PART 1 - GENERAL

1.1 RELATED DOCUMENTS

- A. Drawings and general provisions of the Contract, including General and Supplementary Conditions and Division 01 Specification Sections, apply to this Section.

1.2 SUMMARY

- A. Section Includes:

- 1. Cold-applied built-up asphalt roofing system on metal deck, including but not limited to:
 - a. Roof membrane and membrane base flashings.
 - b. Roof surfacing consisting of mineral granulated cap sheet.

- B. Related Sections:

1.3 DEFINITIONS

- A. Roofing Terminology: See ASTM D 1079 and glossary of NRCA's "The NRCA Roofing and Waterproofing Manual" for definition of terms related to built-up roofing.

1.4 ACTION SUBMITTALS

- A. Product Data: For each type of product indicated.

1.5 DELIVERY, STORAGE, AND HANDLING

- A. Deliver roofing materials to Project site in original containers with seals unbroken and labeled with manufacturer's name, product brand name and type, date of manufacture, approval or listing agency markings, and directions for storing and mixing with other components.
- B. Store liquid materials in their original undamaged containers in a clean, dry, protected location and within the temperature range required by roofing manufacturer. Protect stored liquid material from direct sunlight.
 - 1. Discard and legally dispose of liquid material that cannot be applied within its stated shelf life.
- C. Handle and store roofing materials and place equipment in a manner to avoid permanent deflection of deck.

1.6 PROJECT CONDITIONS

- A. Weather Limitations: Proceed with installation only when existing and forecasted weather conditions permit roofing to be installed according to manufacturer's written instructions and warranty requirements.
- B. Daily Protection: Coordinate installation of roofing so insulation and other components of roofing system not permanently exposed are not subjected to precipitation or left uncovered at the end of the workday or when rain is forecast.

1.7 WARRANTY

- A. No warranty on repairs.

PART 2 - PRODUCTS

2.1 MANUFACTURERS

- A. Manufacturers: Subject to compliance with requirements, provide products by a manufacturer meeting qualification requirements in Quality Assurance Article.
- B. Basis-of-Design Manufacturer/Product: The roof system specified in this Section is based upon products of Tremco, Inc., Beachwood, OH, (800) 562-2728, www.tremcoroofing.com that are named in other Part 2 articles. Provide specified products.

2.2 PERFORMANCE REQUIREMENTS

- A. General Performance: Roofing shall withstand exposure to weather without failure or leaks due to defective manufacture or installation.
 - 1. Accelerated Weathering: Roofing system shall withstand 2000 hours of exposure when tested according to ASTM G 152, ASTM G 154, or ASTM G 155.
 - 2. Impact Resistance: Roofing system shall resist impact damage when tested according to ASTM D 3746 or ASTM D 4272.
- B. Material Compatibility: Provide roofing materials that are compatible with one another under conditions of service and application required, as demonstrated by built-up roofing manufacturer based on testing and field experience.

2.3 ROOFING MEMBRANE MATERIALS

- A. Base Flashing Sheets:
 - 1. ASTM D 6162 Type III Grade G SBS/SEBS-modified asphalt-coated composite polyester and glass-fiber-reinforced sheet, granular surfaced.
 - a. Basis of design product: Tremco, POWERply 300 FR.
 - b. Exterior Fire-Test Exposure, ASTM E 108: Class A.

- c. Tensile Strength at 73 deg. F (23 deg. C), minimum, ASTM D 5147: Machine direction 345 lbf/in (60. kN/m); Cross machine direction 340 lbf/in (60 kN/m).
- d. Tear Strength at 73 deg. F (23 deg. C), minimum, ASTM D 5147: Machine direction, 600 lbf (2.6 kN); Cross machine direction 580 lbf (2.5 kN).
- e. Elongation at 73 deg. F (23 deg. C), minimum, ASTM D 5147: Machine direction 12.0 percent; Cross machine direction 8.0 percent.
- f. Low Temperature Flex, maximum, ASTM D 5147: -35 deg. F (-37 deg. C).
- g. Thickness, minimum, ASTM D 5147: 0.138 inch (3.5 mm).

B. Detailing Fabric:

- 1. Woven Glass Fiber Mesh, Vinyl-Coated: Non-shrinking, non-rotting, vinyl-coated woven glass mesh for reinforcing flashing seams, membrane laps, and other roof system detailing..
 - a. Basis of design product: Tremco, BURmesh.
 - b. Tensile strength, 70 deg. F, ASTM D 146: Warp, 65 lbf/in (289 N); fill, 75 lbf/in (311 N).

2.4 COLD-APPLIED ADHESIVE MATERIALS

A. General: Adhesive and sealant materials recommended by roofing manufacturer for intended use and compatible with built-up roofing.

- 1. Liquid-type auxiliary materials shall comply with VOC limits of authorities having jurisdiction.

B. Asphalt Primer:

- 1. Asphalt primer, water-based, polymer modified.
 - a. Basis of design product: Tremco, TREMprime WB.
 - b. Volatile Organic Compounds (VOC), maximum, ASTM D 3960: 2 g/L.

C. Vertical Striping & 3-course Stripping Mastic:

- 1. Elastomeric Roofing Mastic, Low-Volatile: One-part, trowel-grade, elastomeric roof mastic, formulated for compatibility and use with specified roofing membranes and flashings.
 - a. Basis of design product: Tremco, POLYroof LV.
 - b. Volatile Organic Compounds (VOC), maximum, ASTM D 3960: 300 g/L.
 - c. Elongation at -30 deg. F (-34 deg. C), minimum, ASTM D 412: 100 percent.

- d. Recovery from 500 percent Elongation, minimum, ASTM D 412: 90 percent.
- e. Flexibility at -40 deg. F (-40 deg. C), ASTM D 3111: No cracking.

D. Flashing Sheet Adhesive:

- 1. Roof Cement, Asphalt-Based: ASTM D 4586, Type II, Class I, fibrated roof cement formulated for use in installation and repair of asphalt ply and modified bitumen roofing plies and flashings; UL-classified for fire resistance..
 - a. Basis of design product: Tremco, ELS.
 - b. Volatile Organic Compounds (VOC), maximum, ASTM D 3960: 190 g/L.
 - c. Non-Volatile Matter, ASTM D 4586: 85 percent.

E. Asphalt Roofing Cement: ASTM D 4586, asbestos free, of consistency required by roofing manufacturer for application.

F. Mastic Sealant: Polyisobutylene, plain or modified bitumen, nonhardening, nonmigrating, nonskinning, and nondrying.

2.5 SURFACING

A. Cold-applied roofing adhesive and surfacer, one-part, formulated for compatibility and use with specified roofing membranes and flashings.

- 1. Basis of design product: Tremco, BURmastic Adhesive.
- 2. Volatile Organic Compounds (VOC), maximum, ASTM D 6511: 250 g/L.
- 3. Nonvolatile Content, minimum, ASTM D 6511: 72 percent.
- 4. Flash Point, minimum, ASTM D 93: 100 deg F (38 deg C).

B. Aggregate Stone Surfacing: Clean, dry, opaque, water-worn or crushed stone, free of sharp edges..

- 1. Basis of design product: Aggregate Stone Surfacing.
- 2. Size, ASTM D 1863: No. 6 or 67.

PART 3 - EXECUTION

3.1 EXAMINATION

A. Examine substrates, areas, and conditions, with Installer present, for compliance with the following requirements and other conditions affecting performance of roofing system:

- 1. Verify that roof openings and penetrations are in place and curbs are set and braced and that roof drain bodies are securely clamped in place.

3.2 PREPARATION

- A. Spud gravel at repair areas as required.
- B. Clean substrate of dust, debris, moisture, and other substances detrimental to roofing installation according to roofing manufacturer's written instructions. Remove sharp projections.
- C. Prevent materials from entering and clogging roof drains and conductors and from spilling or migrating onto surfaces of other construction. Remove roof-drain plugs when no work is taking place or when rain is forecast.

3.3 INSTALLATION, GENERAL

- A. Install roofing system in accordance with the following NRCA Manual Plates and NRCA recommendations; modify as required to comply with requirements of FMG references above:
 - 1. Base Flashing for Wall-supported Deck: Plates BUR-5 and BUR-5S.
 - 2. Base Flashing for Non-wall-supported deck (Movement Joint): Plates BUR-6 and BUR-6S.
 - 3. Base and Surface-mounted Counterflashing: Plates BUR-4 and BUR-4S.
 - 4. Expansion Joint with Metal Cover: Plates BUR-7 and BUR-7S and Division 07 Section "Sheet Metal Flashing and Trim."
 - 5. Expansion Joint with Premanufactured Cover: Plates BUR-7A and BUR-7AS and Division 07 Section "Roof Expansion Assemblies."
 - 6. Raised Curb Detail at Rooftop HVAC Units, Premanufactured: Plates BUR-12 and BUR-12S and Division 7 Section "Roof Accessories."
 - 7. Raised Curb Detail at Rooftop HVAC Units (Job site constructed wood curb): Plates BUR-13 and BUR-13S and Division 06 Section "Miscellaneous Rough Carpentry."
 - 8. Penetration, Sheet Metal Enclosure for Piping Through Roof Deck: Plates BUR-16 and BUR-16S
 - 9. Penetration, Isolated Stack Flashing: Plates BUR-17 and BUR-17S.
 - 10. Penetration, Isolated Stack Flashing: Plates BUR-17A and BUR-17AS.
 - 11. Penetration, Plumbing Vent: Plates BUR-18 and BUR-18S.
 - 12. Penetration, Pocket: Plates BUR-19 and BUR-19S.
 - 13. Roof Drain: Plates BUR-20 and BUR-20S.
 - 14. Roof Drain: Plates BUR-20A and BUR-20AS.

3.4 COLD-APPLIED BUILT-UP ROOFING INSTALLATION, GENERAL

- A. Install roofing membrane according to roofing manufacturer's written instructions and applicable recommendations of ARMA/NRCA's "Quality Control Guidelines for the Application of Built-up Roofing" and as follows:
 - 1. Deck Type: Metal deck.
 - 2. Mineral-granule-surfaced cap sheet in addition to number of ply sheets specified.
 - a. Adhering Method: Cold-applied adhesive.
 - 3. Surfacing Type: A (aggregate).

3.5 FLASHING AND STRIPPING INSTALLATION

- A. Install base flashing over cant strips and other sloping and vertical surfaces, at roof edges, and at penetrations through roof, and secure to substrates according to built-up roofing manufacturer's written instructions and as follows:
 - 1. Extend base flashing up walls or parapets a minimum of 12 inches (300 mm) above built-up roofing and 6 inches (150 mm) onto field of built-up roofing.
 - 2. Prime substrates with asphalt primer if required by built-up roofing manufacturer.
 - 3. Flashing Sheet Application: Adhere flashing sheet to substrate in cold-applied adhesive. Apply cold-applied flashing sheet adhesive to back of flashing sheet if recommended by roofing manufacturer. Mechanically fasten top of base flashing securely at terminations and perimeter of roofing.
- B. Seal top termination of base flashing with a metal termination bar.
- C. Install stripping, according to roofing manufacturer's written instructions, where metal flanges and edgings are set on built-up roofing.
 - 1. Flashing-Sheet Stripping: Install flashing-sheet stripping in a continuous coating of cold-applied flashing sheet adhesive, and extend onto roofing membrane.

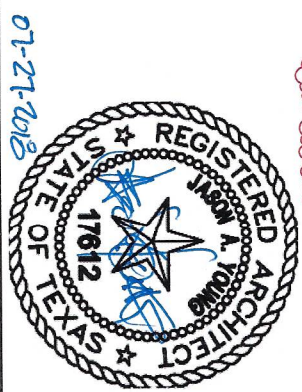
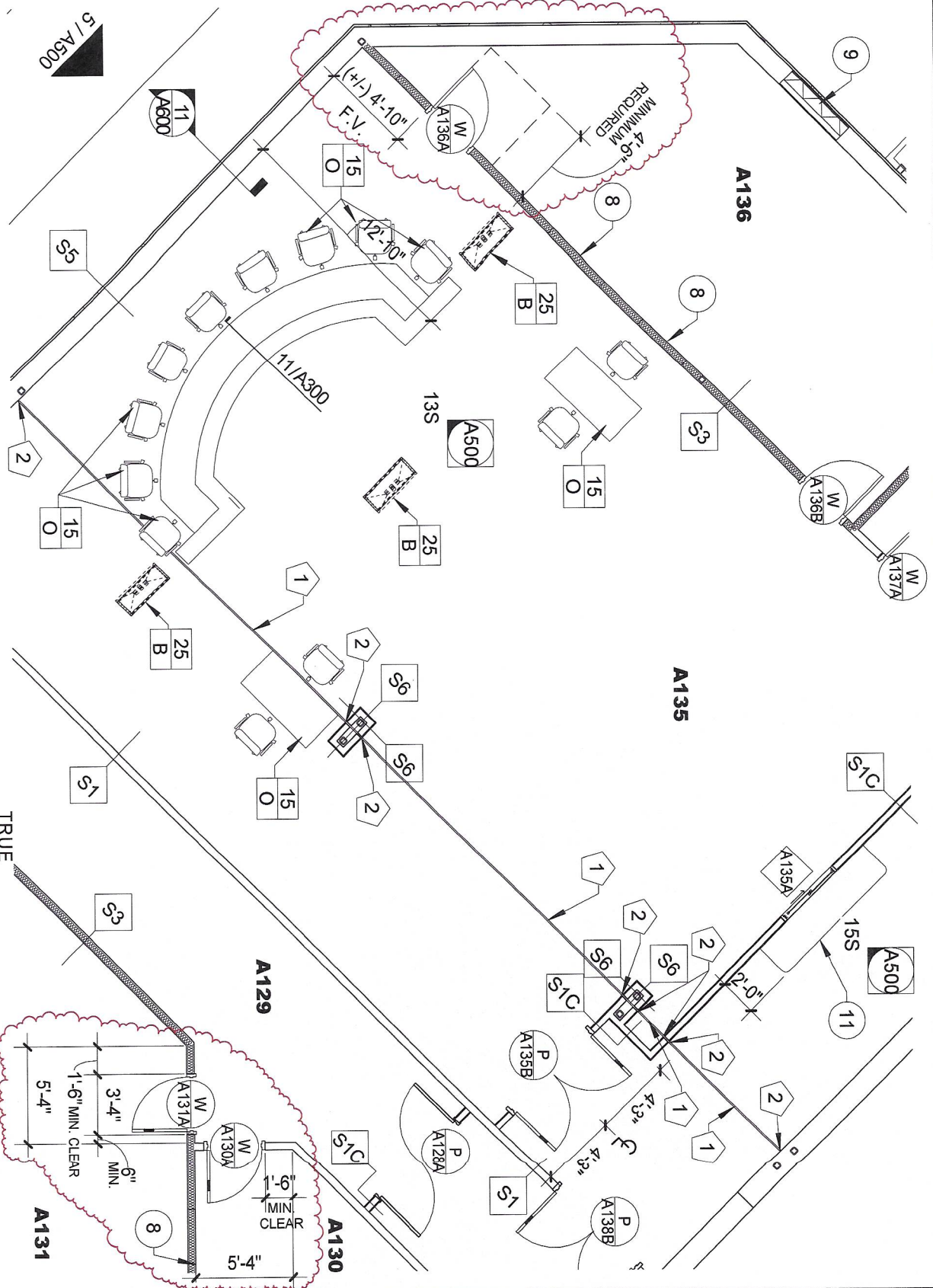
3.6 PROTECTING AND CLEANING

- A. Protect built-up roofing from damage and wear during remainder of construction period. When remaining construction will not affect or endanger roofing, inspect roofing for deterioration and damage, describing its nature and extent in a written report, with copies to Architect and Owner.
- B. Correct deficiencies in or remove built-up roofing that does not comply with requirements, repair substrates, and repair or reinstall roofing to a condition free of damage and deterioration at time of Substantial Completion and according to warranty requirements.

END OF SECTION 075113.13

1 FLOOR / FIXTURE PLAN
 REVISED FROM SHEET A200

1/8" = 1'-0"



07-27-2018

LWA ARCHITECTS

American Bank Plaza
 711 N. Carancahua, Suite 404
 Corpus Christi, Texas 78401

Phone: 361.884.7442
 www.lwarchitects.com

RENOVATIONS AT ADMINISTRATION BUILDING
 SANTA ROSA INDEPENDENT SCHOOL DISTRICT
 SANTA ROSA, TEXAS

DATE: 07/27/2018

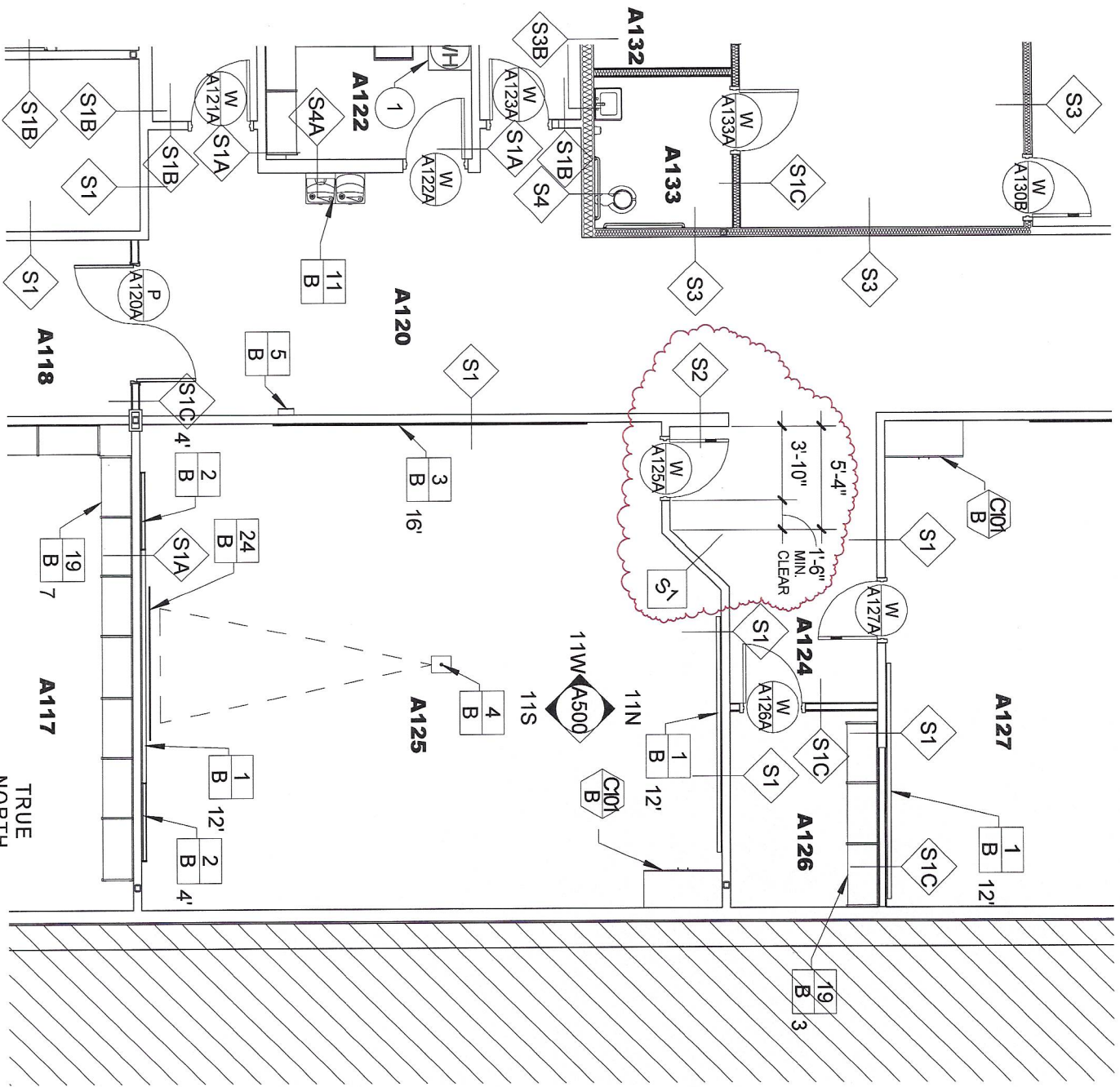
JOB NO: 1706
 SHT. NO. AD2-1

1

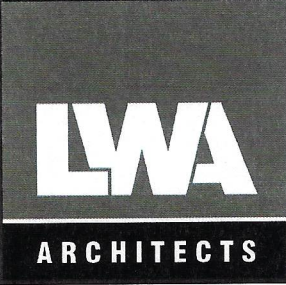
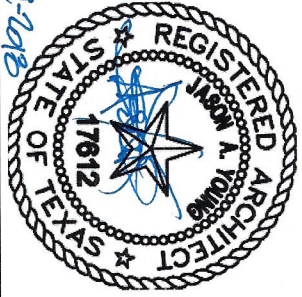
FLOOR / FIXTURE PLAN

REVISED FROM SHEET A200

1/8" = 1'-0"



07-27-2018



American Bank Plaza
 711 N. Carancahua, Suite 404
 Corpus Christi, Texas 78401
 Phone: 361.884.7442
 www.lwarchitects.com

RENOVATIONS AT ADMINISTRATION BUILDING SANTA ROSA INDEPENDENT SCHOOL DISTRICT SANTA ROSA, TEXAS

DATE: 07/27/2018

JOB NO: 1706

SHT. NO. AD2-2