

**BROWN REYNOLDS WATFORD  
ARCHITECTS**



2700 EARL RUDDER FWY SOUTH  
SUITE 4000  
COLLEGE STATION, TEXAS 77845  
979-694-1791  
WWW.BRWARCH.COM

## ADDENDUM NO. 04

**PROJECT:** LOS FRESNOS CITY HALL  
**LOCATION:** LOS FRESNOS, TEXAS  
**PROJECT NO:** 217072.00  
**DATE:** July 17, 2018

The Construction Documents on the above referenced project, dated 6/11/18, shall be revised as follows:

### DRAWINGS

- Item No. 1** (RE: Sheet C1.1, Detail 1) - One additional van accessible parking space is added on the west side of the visitor parking area. The access aisle and ramp arrangement is mirrored from the east side. This change is reflected in attached revised sheets **C1.1, C1.3, C1.4, L1.1, and L1.2.**
- Item No. 2** (RE: Sheet A4.1, Door Schedule) - The hardware set for Door 144A is changed to DK201HR.
- Item No. 3** (RE: Sheet A4.2, Window Types) - Window Types A and B are changed from originally specified Kawneer IR501T storefront framing to Kawneer 1600 curtain wall system, or approved equal. IR501T storefront framing is not available in an arched configuration.
- Item No. 4** (RE: Sheet M0.2, Split System Cooling Units Schedule) – Accessory #12 is added to the Split System Cooling Units (Electrical Heat) Schedule. Accessory #12 shall be “Seacoast Protection Package.” Accessory #12 shall be applied to all CUs on the schedule (CU-1 thru CU-8).
- Item No. 5** (RE: Sheet E0.1, Light Fixture Schedule) – The light fixture schedule on Sheet E0.1 is replaced with the attached **Base Bid Light Fixture Schedule** and **Alternate #11 Light Fixture Schedule.**

### SPECIFICATIONS

- Item No. 6** (RE: Section 08 71 00 Door Hardware) - Article 3.07.
- Set AK714A is revised so that Auto Operator shall only be required on the right hand leaf of each pair of doors.
  - Set DK201HR was originally written for a dutch door and shall be revised to add all necessary hardware for wicket door operation, including continuous hinge, astragal, and dead lock.
- Item No. 7** (RE: Section 26 32 13 Emergency Standby Generator) - Article 1.01. Paragraph B is revised as follows: B. Generator shall be rated as follows: 150kW, 180KVA at 35% maximum voltage dip. The generator tank shall have a minimum run time capacity of **24 48 hours** at full load.

**Item No. 8** (RE: Section 32 14 00 Unit Paving) – Article 3.03. Paragraph G is deleted:  
~~G. Provide steps made of pavers as indicated. Install paver steps before installing adjacent pavers.  
Paver steps installed using mortar setting bed method unless otherwise indicated.~~  
There are no paver steps in the project.

**CLARIFICATIONS**

**Item No. 9** (RE: Sheet C1.3, Detail 1; Section 01 23 00 Alternates) - If Alternate #4 is accepted, some areas will remain as concrete paving, as indicated by the hatch patterns on C1.3. These areas include the driveway aprons, dumpster turn around, and the portion of the drive thru lane(s) underneath the canopy.

**Item No. 10** (RE: Sheet A4.2, Window Types) - Regarding window sizes exceeding TDI test reports: After changing arched openings (types A & B) to 1600 curtain wall system, they will comply with the maximum height tested for that system. Our Kawneer representative has indicated that mullion spacing is flexible as long as the glass area does not exceed 38.9 square feet. This will be confirmed with the TDI inspector during the submittal process.

**Item No. 11** (RE: Section 00 30 00C Geotechnical Addendum Letter, Section 31 32 13 Lime Soil Stabilization) - Regarding percentage of lime stabilization for both Base Bid and Alternate #4: For estimating purposes, assume 8% lime by weight. For construction purposes, optimum lime content of subgrade soils shall be determined by laboratory testing. Laboratory testing shall be paid for by Owner.

**Item No. 12** (RE: Section 00 20 00 Instructions to Proposers) – Compliance with prevailing wage rates and certified payroll is not required for this project. This project is tax exempt. Background checks are not required.

**Item No. 13** (RE: Section 32 14 00 Unit Paving) – Article 1.02. Paragraph A. Concrete pavers forming Texas shape in plaza (Detail 1/C1.2) shall be installed over a sand leveling bed. ADA detectable warning pavers shall be installed set in mortar bed.

**Item No. 14** (RE: Section 32 14 00 Unit Paving) – Article 2.03. Paragraph B. Sand for joints shall be as specified in this paragraph. Polymeric sand is not required.

**Item No. 15** (RE: Section 32 14 00 Unit Paving) – Article 3.04. Paragraph B. Provide 1-1/2 to 2 inches of bedding sand for concrete pavers installed over a sand leveling bed.

**SUBSTITUTIONS**

**Item No. 16** (RE: Section 26 32 13 Emergency Standby Generator) - Article 1.03. Paragraph A. Kohler **IS** an acceptable manufacturer for the Emergency Standby Generator.

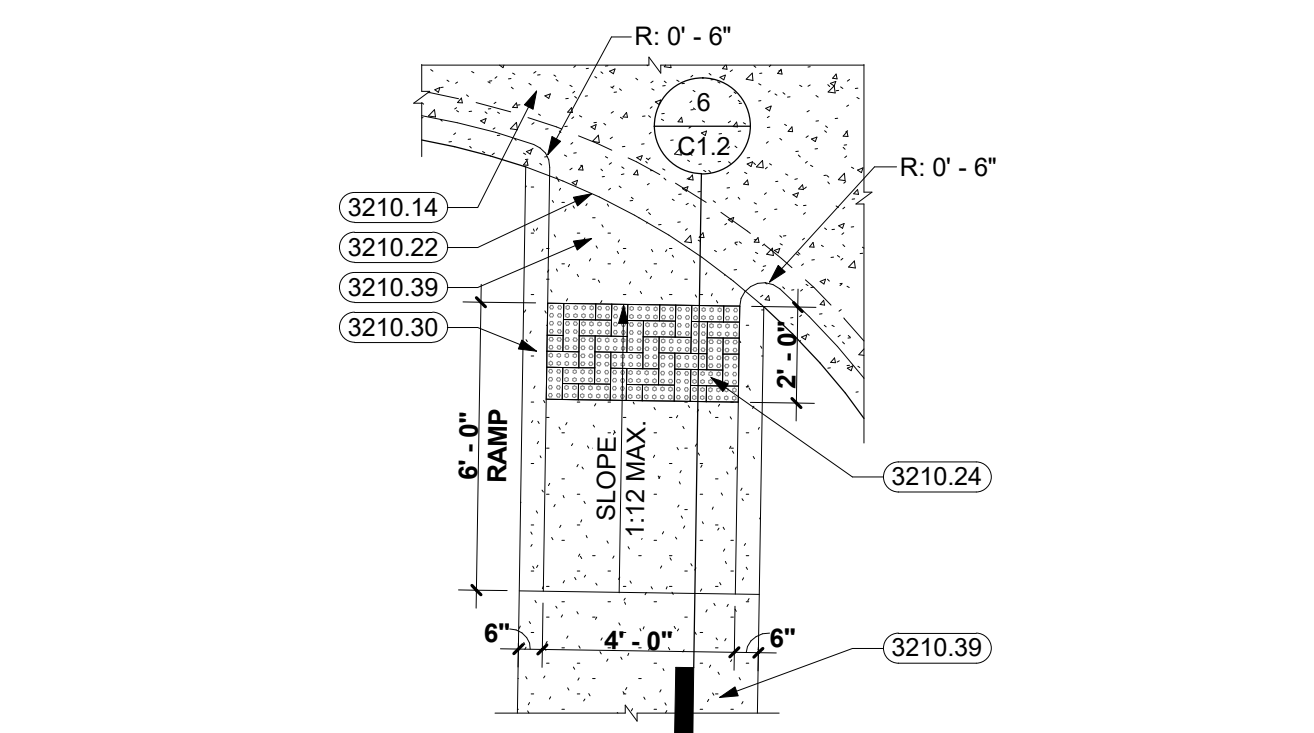
**Item No. 17** (RE: Section 28 05 06 Access Control System) – Article 2.01. Paragraph A. 3xLogic Infinias **IS** an acceptable manufacturer for the Access Control System.

**Item No. 18** (RE: Section 28 31 11 Fire Alarm System) – Article 1.03. Paragraph A. IFP/Silent Knight **IS** an acceptable manufacturer for the Fire Alarm System.

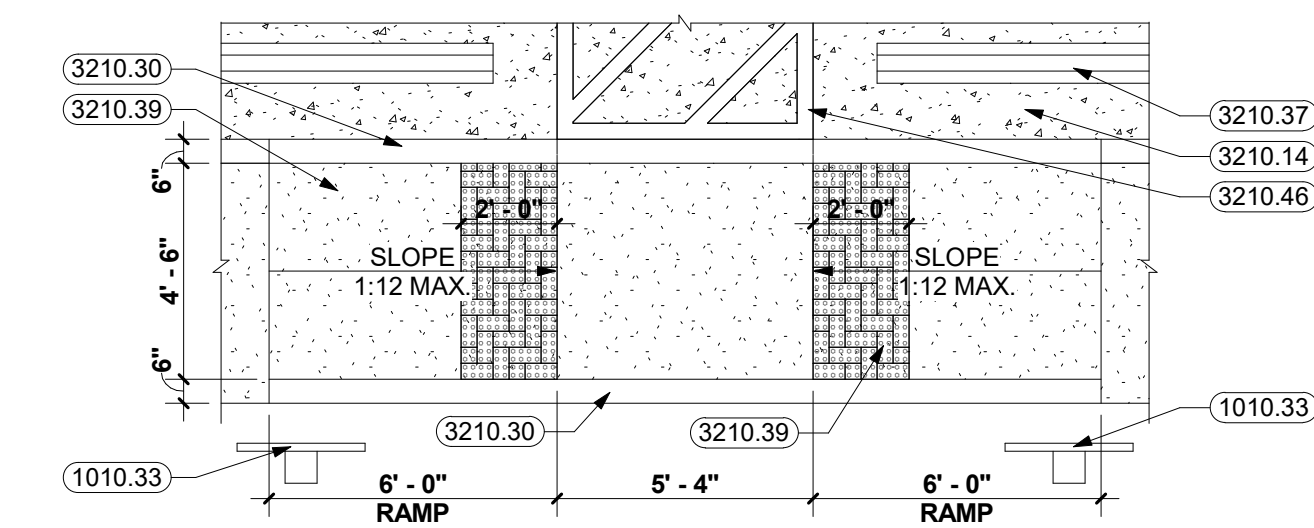
**Item No. 19** (RE: Section 28 31 11 Fire Alarm System) – Article 1.03. Paragraph A. Kidde **IS NOT** an acceptable manufacturer for the Fire Alarm System.

**Attachments: C1.1, C1.3, C1.4, L1.1, L1.2, Base Bid Light Fixture Schedule, Alternate #11 Light Fixture Schedule**

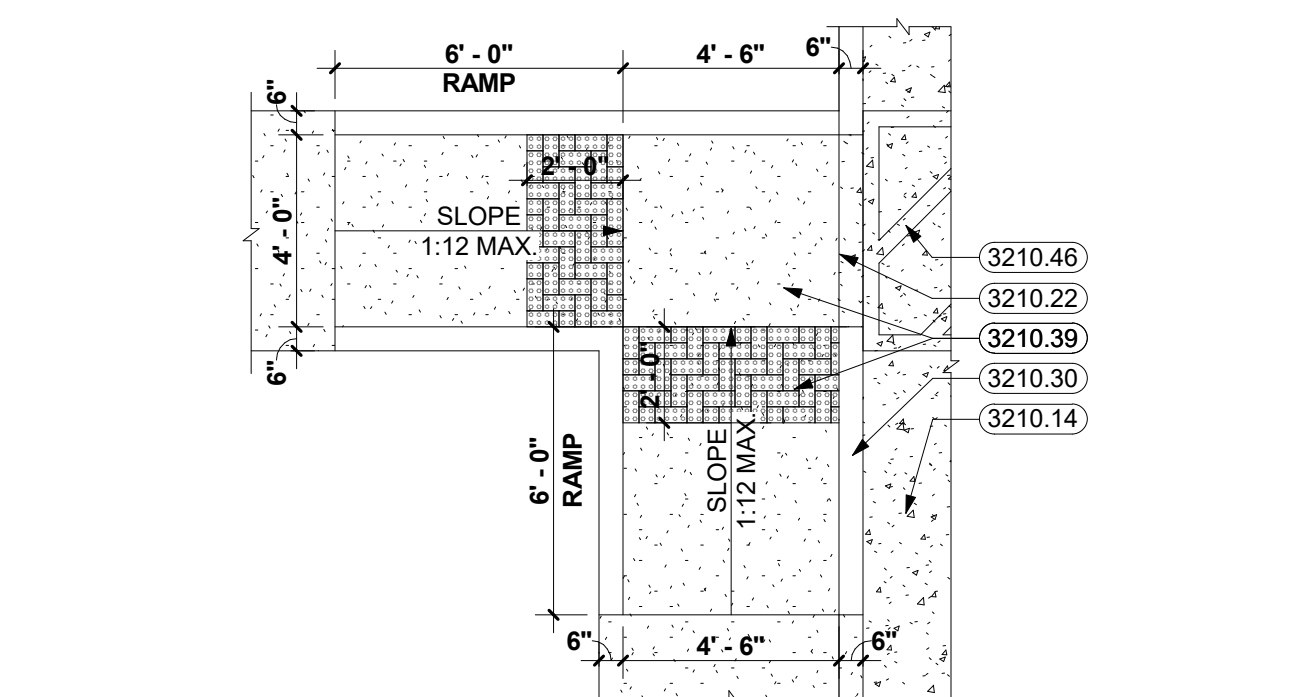
END OF ADDENDUM NO. 04 \* \* \* \* \*



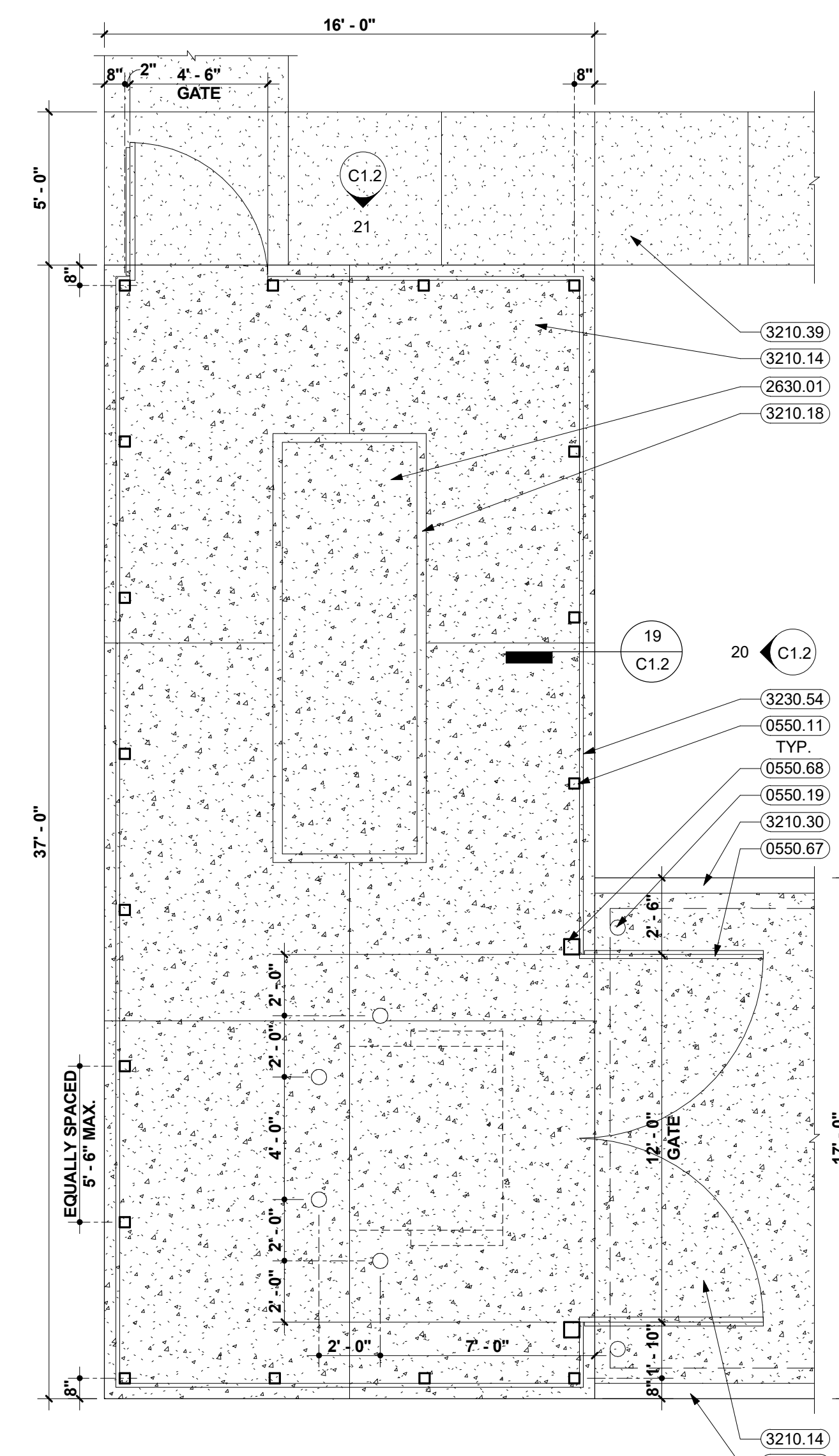
**2 SITE RAMP PLAN**  
1/4" = 1'-0"



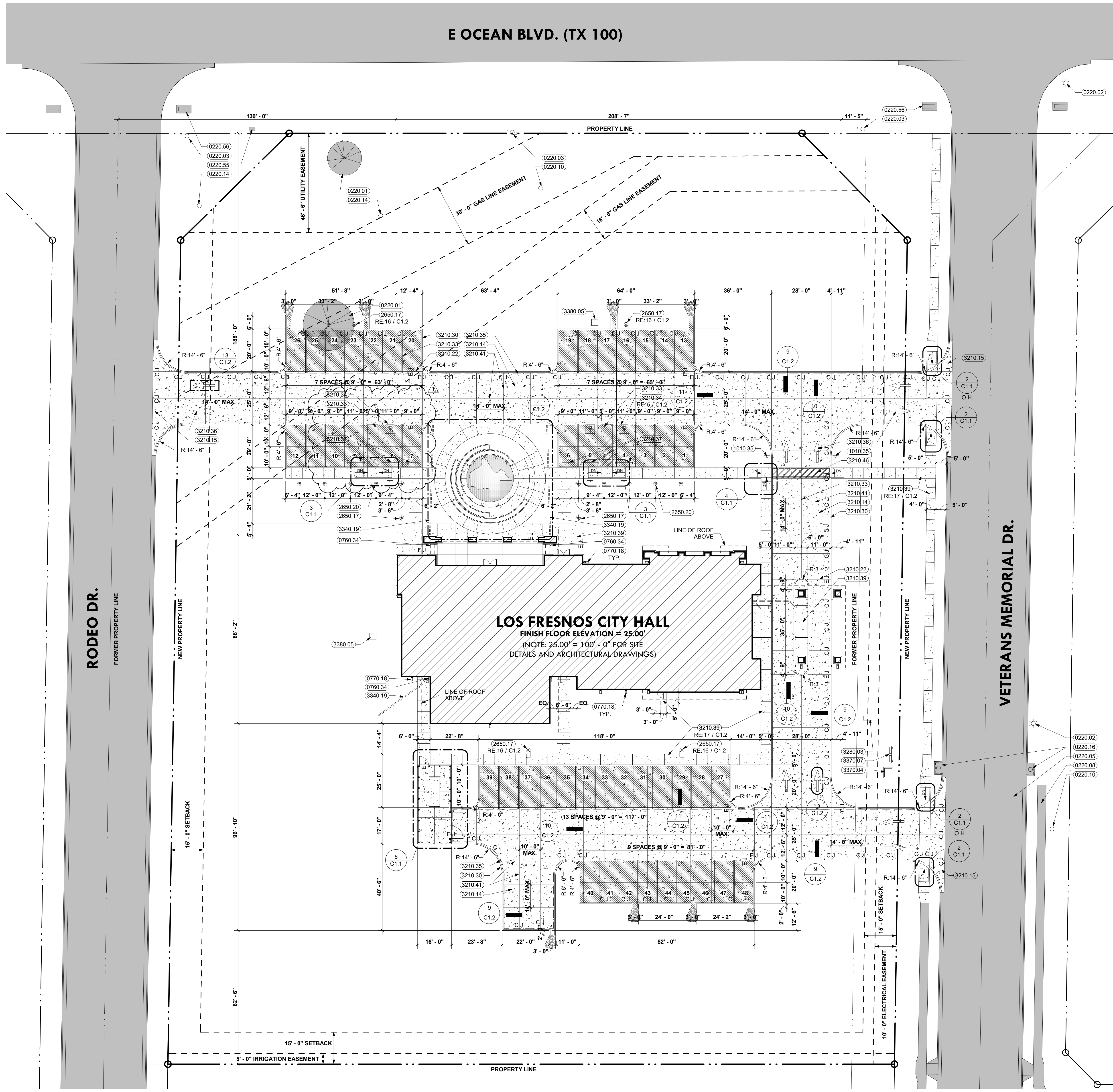
**3 DUAL SITE RAMP**  
1/4" = 1'-0"



**4 DUAL SITE RAMP**  
1/4" = 1'-0"



**5 DUMPSTER ENCLOSURE PLAN**  
1/4" = 1'-0"



**1 SITE PLAN**  
1" = 20'-0"

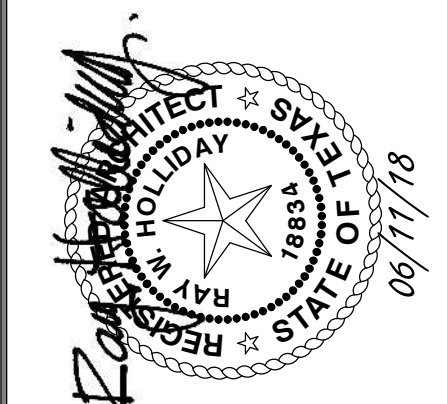
- ### KEYNOTES
- 0220.01 EXISTING TREE
  - 0220.02 EXISTING LIGHT POLE
  - 0220.03 EXISTING POWER POLE
  - 0220.05 EXISTING ASPHALT PAVING
  - 0220.08 EXISTING CONCRETE SIDEWALK
  - 0220.10 EXISTING FIRE HYDRANT
  - 0220.14 EXISTING MANHOLE COVER
  - 0220.16 EXISTING STORM WATER INLET
  - 0220.55 EXISTING COMMUNICATIONS VAULT
  - 0220.56 EXISTING CULVERT
  - 0550.11 4" X 4" X 1/4" STEEL TUBE
  - 0550.19 6" PIPE BOLLARD WITH PRECAST CONCRETE CAP, FILL WITH CONCRETE
  - 0550.67 4" X 2" X 1/4" STEEL TUBE GATE FRAME
  - 0550.68 6" X 6" X 1/4" STEEL TUBE
  - 0760.34 METAL DOWNSPOUT ADAPTER
  - 0770.18 CONCRETE SPLASH BLOCK
  - 1010.33 POLE MOUNTED SIGNAGE - "H.C. PARKING ONLY"
  - 1010.35 POLE MOUNTED SIGNAGE - "DO NOT ENTER"
  - 2630.01 EMERGENCY GENERATOR
  - 2650.17 LIGHT POLE / FIXTURE ON CONCRETE BASE
  - 2650.20 LIGHT BOLLARD
  - 3210.14 CONCRETE PAVING (RE. CIVIL)
  - 3210.15 CONCRETE APPROACH PER CITY REQUIREMENTS
  - 3210.18 CONCRETE GENERATOR PAD
  - 3210.22 PAVING EXPANSION JOINT - FILL WITH JOINT SEALER 1/4" BELOW SURFACE
  - 3210.24 PRE-CAST CONCRETE PAVING UNITS WITH TRUNCATED DOMES (ADA COMPLIANT)
  - 3210.30 6" CONCRETE CURB (WITH GUTTER AS REQUIRED) (RE. CIVIL)
  - 3210.33 4" PAVEMENT MARKING
  - 3210.34 H.C. PAVEMENT MARKING
  - 3210.35 FIRE LANE STRIPING PER CITY REQUIREMENTS
  - 3210.36 DIRECTIONAL PAVEMENT MARKING
  - 3210.37 WHEEL STOP (6'-0" LONG), DRILL AND DOWEL INTO PAVING
  - 3210.39 CONCRETE SIDEWALK (RE. CIVIL)
  - 3210.41 SAW CUT CONTROL JOINT
  - 3210.46 4" PAVEMENT MARKING WITH DIAGONAL STRIPING AT 2'-0" O.C.
  - 3230.54 1 X 8 COMPOSITE DECK BOARD
  - 3280.03 IRRIGATION BACKFLOW PREVENTER AND ENCLOSURE
  - 3340.19 6" PVC PIPE, CONNECT TO DOWNSPOUT ADAPTER AND SLOPE 1/4" PER FOOT MIN.
  - 3370.04 TRANSFORMER WITH CONCRETE PAD PER POWER COMPANY REQUIREMENTS
  - 3370.07 ELECTRIC METER, CT GAN, AND MAIN DISCONNECT PER POWER COMPANY REQUIREMENTS
  - 3380.05 IN-GROUND COMMUNICATIONS PULL BOX

- ### GENERAL NOTES
1. DIMENSIONS ARE TO OUTSIDE FACE (BACK) OF CURB UNLESS OTHERWISE NOTED.
  2. CONCRETE SHALL HAVE A MINIMUM 28-DAY COMPRESSIVE STRENGTH OF 4,000 PSI.

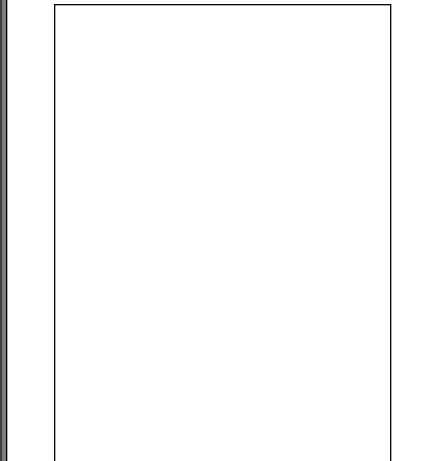
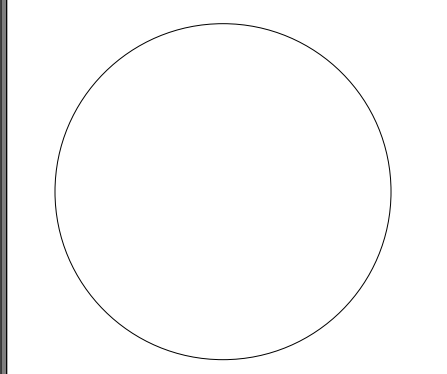
### LEGEND

SYMBOL	DESCRIPTION
[Pattern]	EXISTING TO REMAIN
[Pattern]	7" CONCRETE PAVING WITH #4 BARS @ 16" O.C.E.W. CONTROL JOINTS @ 14'-0" MAX.
[Pattern]	5" CONCRETE PAVING WITH #4 BARS @ 18" O.C.E.W. CONTROL JOINTS @ 10'-0" MAX.
[Pattern]	4" CONCRETE SIDEWALK WITH #4 BARS @ 18" O.C.E.W. CONTROL JOINTS @ 5'-0" MAX.

- ### BID ALTERNATES
- SEE SPECIFICATION SECTION 01 23 00 ALTERNATES FOR ADDITIONAL INFORMATION
- ALT. 1: DELETE LANDSCAPING & IRRIGATION
  - ALT. 2: DELETE OUTDOOR PLAZA
  - ALT. 3: DELETE ONE DRIVE THRU LANE
  - ALT. 4: CHANGE CONCRETE PAVING TO ASPHALT
  - ALT. 5: CHANGE FENCE FROM COMPOSITE TO CEDAR
  - ALT. 6: CHANGE MEDALLIONS TO A SINGLE DESIGN
  - ALT. 7: CHANGE MANUFACTURED STONE TO STUCCO
  - ALT. 8: CHANGE METAL ROOF TO ASPHALT SHINGLES
  - ALT. 9: DELETE COILING SECURITY GRILLES
  - ALT. 10: DELETE LIGHTNING PROTECTION SYSTEM
  - ALT. 11: CHANGE LED LIGHTING TO FLUORESCENT
  - ALT. 12: DELETE BACKUP GENERATOR & ATS



**BROWN REYNOLDS WATFORD ARCHITECTS**  
2700 EARL BURDER FERRY SOUTH  
SUITE 4000 DALLAS, TEXAS 77245  
979.694.1791  
WWW.BRWARCHITECT.COM

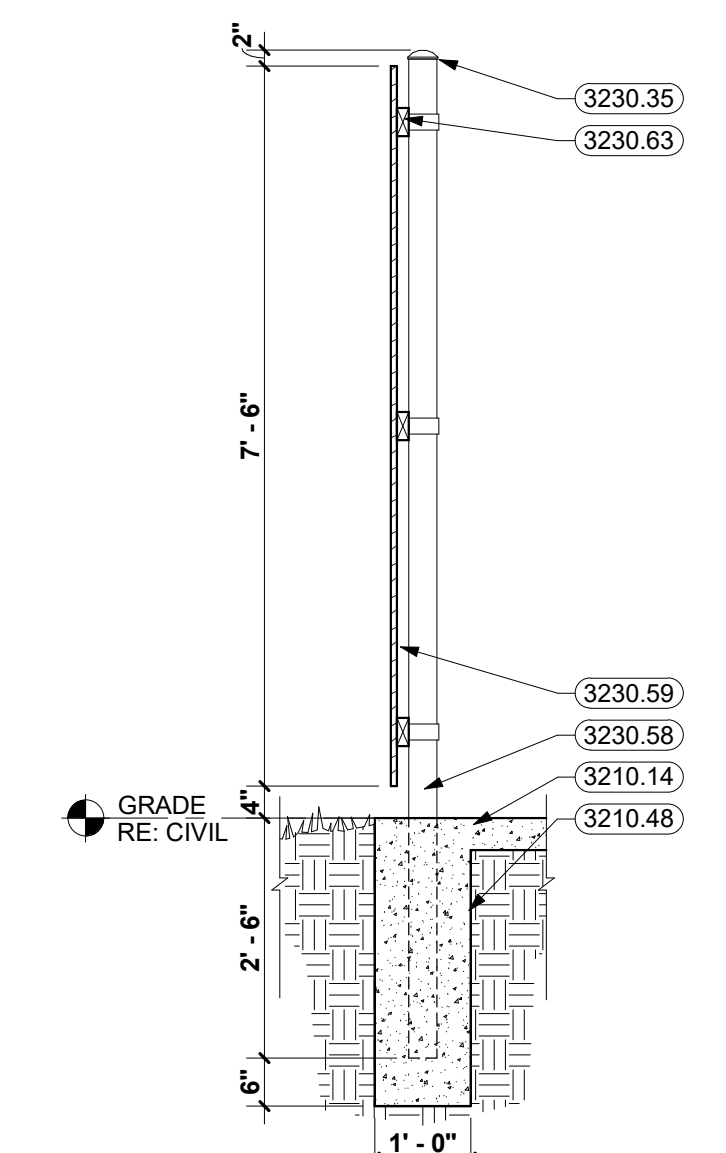


COPYRIGHT © 2018 BROWN REYNOLDS WATFORD ARCHITECTS, INC.  
DATE 06/11/18  
DRAWN BY JW, JH, DP  
CHECKED BY MW, RH  
BRW PROJECT NUMBER 21707200

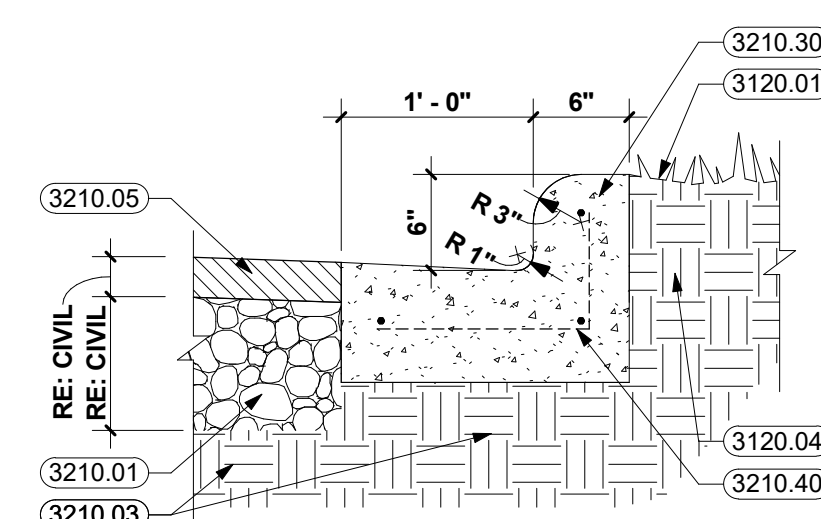
**LOS FRESNOS CITY HALL**  
520 EAST OCEAN BLVD  
LOS FRESNOS, TX 78566

NO.	REVISION	DATE
1	ADDENDUM NO. 4	7/17/18

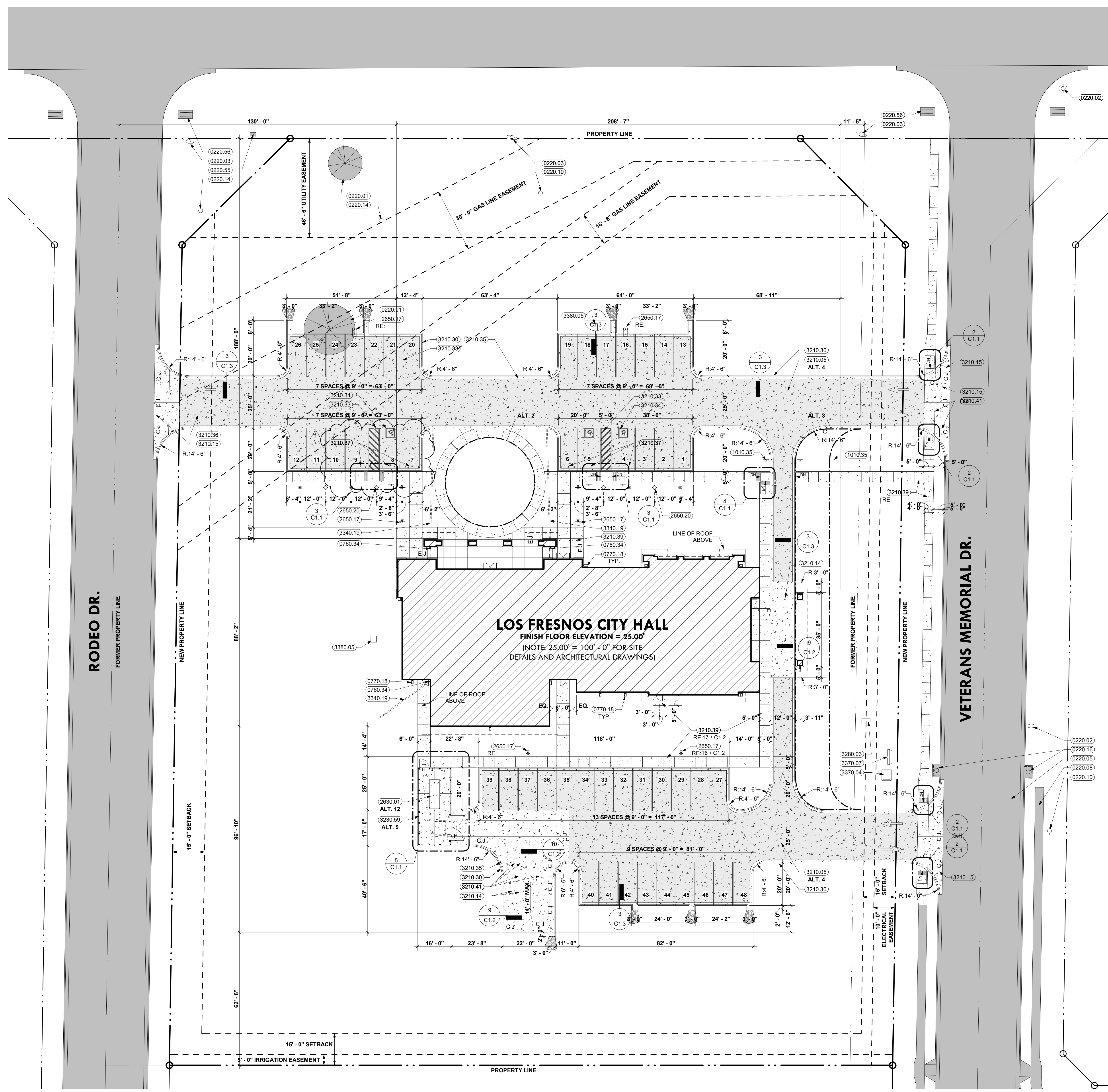
**C1.1**  
SITE PLAN



**2 FENCE DETAIL (ALT. 5)**  
1/2" = 1'-0"



**3 CURB DETAIL (ALT. 4)**  
1" = 1'-0"



**1 ALTERNATE SITE PLAN**  
1" = 20'-0"

**KEYNOTES**

- 0220.01 EXISTING TREE
- 0220.02 EXISTING LIGHT POLE
- 0220.03 EXISTING POWER POLE
- 0220.05 EXISTING ASPHALT PAVING
- 0220.08 EXISTING CONCRETE SIDEWALK
- 0220.10 EXISTING FIRE HYDRANT
- 0220.14 EXISTING MANHOLE COVER
- 0220.16 EXISTING STORM WATER INLET
- 0220.55 EXISTING COMMUNICATIONS VAULT
- 0220.56 EXISTING CULVERT
- 0760.34 METAL DOWNSPOUT ADAPTER
- 0770.18 CONCRETE SPLASH BLOCK
- 1010.35 POLE MOUNTED SIGNAGE - "DO NOT ENTER"
- 2630.01 EMERGENCY GENERATOR
- 2650.17 LIGHT POLE / FIXTURE ON CONCRETE BASE
- 2650.20 LIGHT BOLLARD
- 3120.01 GRADE
- 3120.04 EARTH
- 3210.01 FLEXIBLE BASE COURSE
- 3210.03 LIME STABILIZED BASE COURSE
- 3210.05 ASPHALT PAVING AND SEAL COAT (RE: CIVIL)
- 3210.14 CONCRETE PAVING (RE: CIVIL)
- 3210.15 CONCRETE APPROACH PER CITY REQUIREMENTS
- 3210.30 6" CONCRETE CURB (WITH GUTTER AS REQUIRED) (RE: CIVIL)
- 3210.33 4" PAVEMENT MARKING
- 3210.34 H.C. PAVEMENT MARKING
- 3210.35 FIRE LANE STRIPING PER CITY REQUIREMENTS
- 3210.36 DIRECTIONAL PAVEMENT MARKING
- 3210.37 WHEEL STOP (6'-0" LONG), DRILL AND DOWEL INTO PAVING
- 3210.39 CONCRETE SIDEWALK (RE: CIVIL)
- 3210.40 STEEL REINFORCING (RE: CIVIL)
- 3210.41 SAW CUT CONTROL JOINT
- 3210.48 CONCRETE
- 3230.35 POST CAP
- 3230.58 GALVANIZED STEEL POST @ 8'-0" O.C.
- 3230.59 7'-6" SOLID CEDAR (1 X 6) FENCE WITH GALVANIZED STEEL POSTS AT 8'-0" O.C. MAX.
- 3230.63 2 X 4 PRESSURE TREATED WOOD RAIL
- 3280.03 IRRIGATION BACKFLOW PREVENTER AND ENCLOSURE
- 3340.19 6" PVC PIPE; CONNECT TO DOWNSPOUT ADAPTER AND SLOPE 1/4" PER FOOT MIN.
- 3370.04 TRANSFORMER WITH CONCRETE PAD PER POWER COMPANY REQUIREMENTS
- 3370.07 ELECTRIC METER, CT CAN, AND MAIN DISCONNECT PER POWER COMPANY REQUIREMENTS
- 3380.05 IN-GROUND COMMUNICATIONS PULL BOX

**GENERAL NOTES**

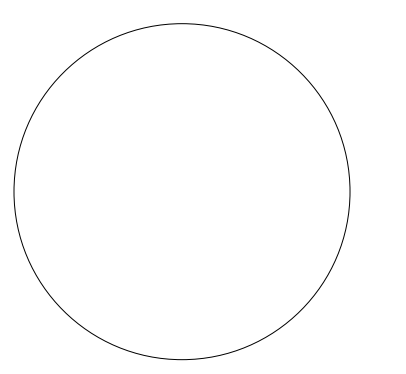
1. DIMENSIONS ARE TO OUTSIDE FACE (BACK) OF CURB UNLESS OTHERWISE NOTED.
2. CONCRETE SHALL HAVE A MINIMUM 28-DAY COMPRESSIVE STRENGTH OF 4,000 PSI.

**LEGEND**

SYMBOL	DESCRIPTION
(Pattern)	EXISTING TO REMAIN
(Pattern)	7" CONCRETE PAVING WITH #4 BARS @ 16" O.C.E.W. CONTROL JOINTS @ 14'-0" MAX.
(Pattern)	5" CONCRETE PAVING WITH #4 BARS @ 16" O.C.E.W. CONTROL JOINTS @ 10'-0" MAX.
(Pattern)	4" CONCRETE SIDEWALK WITH #4 BARS @ 16" O.C.E.W. CONTROL JOINTS @ 5'-0" MAX.



**BROWN REYNOLDS WATFORD ARCHITECTS**  
2700 EARL BUDDER FERRY SOUTH  
SUITE 4000 DALLAS, TEXAS 77745  
979.694.1791  
WWW.BRWARCHIT.COM



COPYRIGHT © 2018 BROWN REYNOLDS WATFORD ARCHITECTS, INC.  
DATE 06/11/18  
DRAWN BY JW, JH, DP  
CHECKED BY MW, RH  
BRW PROJECT NUMBER 21707200

**LOS FRESNOS CITY HALL**  
520 EAST OCEAN BLVD  
LOS FRESNOS, TX 78566

NO.	REVISION	DATE
1	ADDENDUM NO. 4	7/17/18

**BID ALTERNATES**

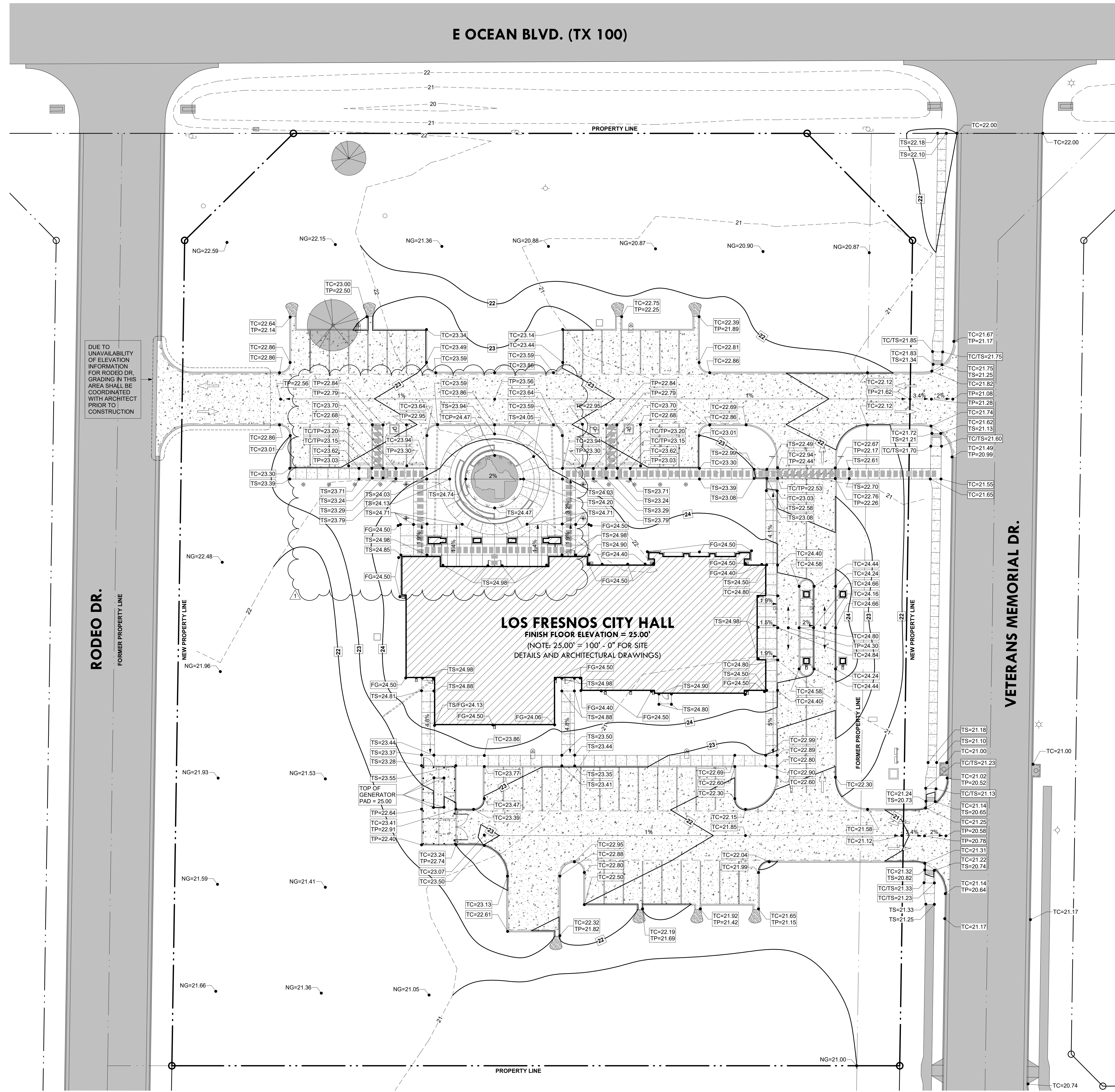
- SEE SPECIFICATION SECTION 01 23 00 ALTERNATES FOR ADDITIONAL INFORMATION
- ALT. 1: DELETE LANDSCAPING & IRRIGATION
  - ALT. 2: DELETE OUTDOOR PLAZA
  - ALT. 3: DELETE ONE DRIVE THRU LANE
  - ALT. 4: CHANGE CONCRETE PAVING TO ASPHALT
  - ALT. 5: CHANGE FENCE FROM COMPOSITE TO CEDAR
  - ALT. 6: CHANGE MEDALLIONS TO A SINGLE DESIGN
  - ALT. 7: CHANGE MANUFACTURED STONE TO STUCCO
  - ALT. 8: CHANGE METAL ROOF TO ASPHALT SHINGLES
  - ALT. 9: DELETE COILING SECURITY GRILLES
  - ALT. 10: DELETE LIGHTNING PROTECTION SYSTEM
  - ALT. 11: CHANGE LED LIGHTING TO FLUORESCENT
  - ALT. 12: DELETE BACKUP GENERATOR & ATS

**C1.3**

E OCEAN BLVD. (TX 100)

GRADING LEGEND

- 100 --- EXISTING CONTOURS
  - 100 — REVISED CONTOURS
  - 100 ● EXISTING SPOT GRADE
  - 100 ● REVISED SPOT GRADE
  - ▬ ACCESSIBLE ROUTE
- FG = FINISHED GRADE  
 NG = NATURAL GRADE  
 TC = TOP OF CURB  
 TOP = TOP OF CONCRETE PAVERS  
 TP = TOP OF PAVING  
 TS = TOP OF SIDEWALK



DUE TO UNAVAILABILITY OF ELEVATION INFORMATION FOR RODEO DR. GRADING IN THIS AREA SHALL BE COORDINATED WITH ARCHITECT PRIOR TO CONSTRUCTION.

**LOS FRESNOS CITY HALL**  
 FINISH FLOOR ELEVATION = 25.00'  
 (NOTE: 25.00' = 100' - 0" FOR SITE DETAILS AND ARCHITECTURAL DRAWINGS)

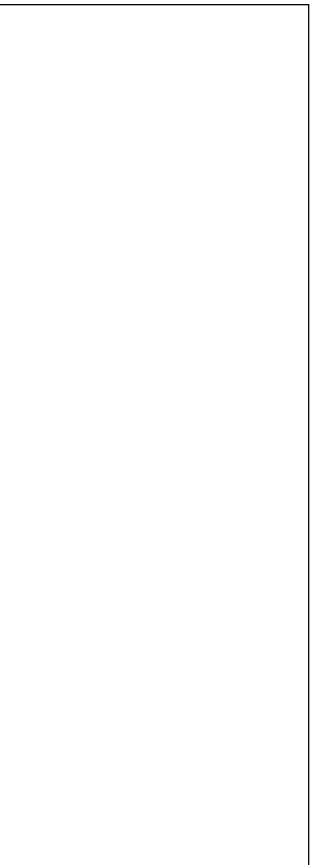
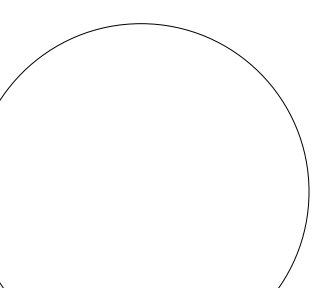
RODEO DR.  
 FORMER PROPERTY LINE

VETERANS MEMORIAL DR.

**1 GRADING PLAN**  
 1" = 20'-0"



**BROWN REYNOLDS WATFORD ARCHITECTS**  
 2700 EARL BURDETTE FRYWY SOUTH  
 SUITE 4000  
 LOS FRESNOS, TEXAS 77845  
 979-664-1791  
 WWW.BRWARCH.COM



COPYRIGHT © 2018 BROWN REYNOLDS WATFORD ARCHITECTS, INC.  
 DATE 06/11/18  
 DRAWN BY JW, JH, DP  
 CHECKED BY MW, RH  
 BRW PROJECT NUMBER 21707200

**LOS FRESNOS CITY HALL**  
 520 EAST OCEAN BLVD  
 LOS FRESNOS, TX 78566

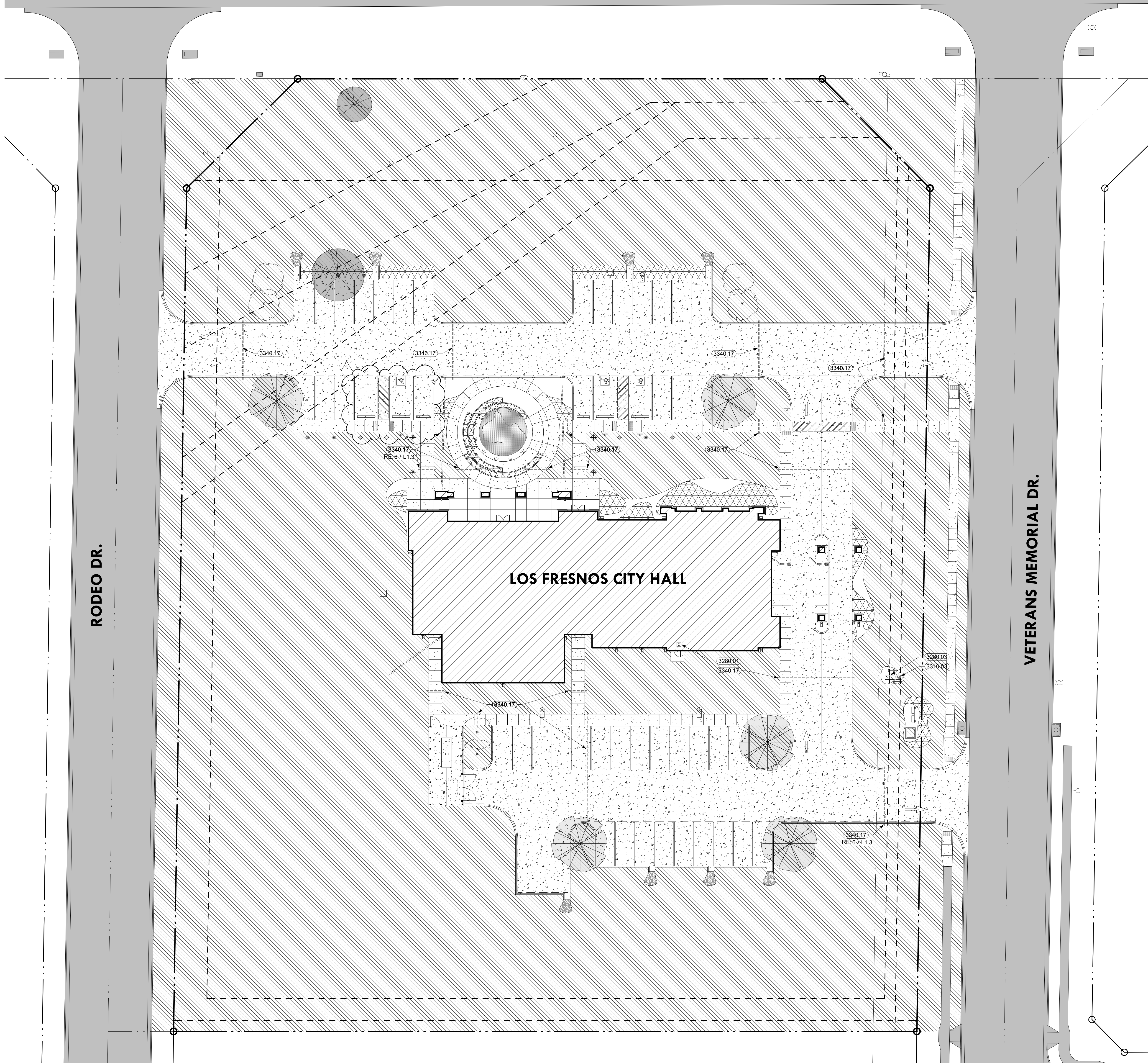
NO.	REVISION	DATE
1	ADDENDUM NO. 4	7/17/18

- BID ALTERNATES**
- SEE SPECIFICATION SECTION 01 23 00 ALTERNATES FOR ADDITIONAL INFORMATION
- ALT. 1: DELETE LANDSCAPING & IRRIGATION
  - ALT. 2: DELETE OUTDOOR PLAZA
  - ALT. 3: DELETE ONE DRIVE THRU LANE
  - ALT. 4: CHANGE CONCRETE PAVING TO ASPHALT
  - ALT. 5: CHANGE FENCE FROM COMPOSITE TO CEDAR
  - ALT. 6: CHANGE MEDALLIONS TO A SINGLE DESIGN
  - ALT. 7: CHANGE MANUFACTURED STONE TO STUCCO
  - ALT. 8: CHANGE METAL ROOF TO ASPHALT SHINGLES
  - ALT. 9: DELETE COILING SECURITY GRILLES
  - ALT. 10: DELETE LIGHTNING PROTECTION SYSTEM
  - ALT. 11: CHANGE LED LIGHTING TO FLUORESCENT
  - ALT. 12: DELETE BACKUP GENERATOR & ATS

**C1.4**



E OCEAN BLVD. (TX 100)



**1 IRRIGATION PLAN**

1" = 20'-0"



**KEYNOTES**

- 3280.01 IRRIGATION CONTROLLER
- 3280.03 IRRIGATION BACKFLOW PREVENTER AND ENCLOSURE
- 3310.03 IRRIGATION METER
- 3340.17 4 INCH PVC SLEEVE

**IRRIGATION NOTES**

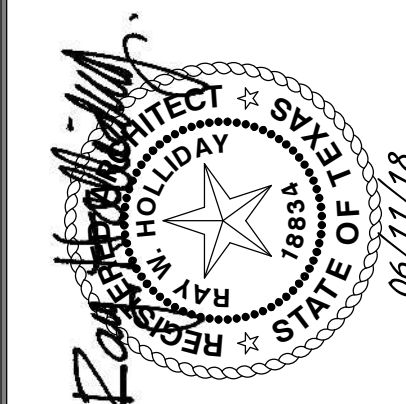
1. ALL 24 VOL. LEAD AND COMMON VALVE WIRING SHALL BE A MINIMUM OF UF-14 GA. SINGLE CONDUCTOR. REFER TO MANUFACTURER'S RECOMMENDATIONS FOR PROPER WIRE SIZE. WIRE SPLICES SHALL BE PERMANENT AND WATERPROOF.
2. COORDINATE INSTALLATION OF IRRIGATION SYSTEM WITH LANDSCAPE CONTRACTOR TO ENSURE ALL PLANT MATERIAL WILL BE WATERED IN ACCORDANCE WITH THE INTENT OF THE PLANS AND SPECIFICATIONS.
3. LATERAL PIPING SHALL HAVE A MINIMUM OF 12 INCHES OF COVER. MAINLINE AND PIPING UNDER PAVING SHALL HAVE A MINIMUM OF 18 INCHES COVER.
4. CONNECT LAWN AND HIGH-POP SPRAY HEADS TO LATERAL PIPING WITH 1/2" FLEXIBLE PVC AND 1/2" SCH. 40 PVC FITTINGS AS REQUIRED. PER DETAIL SHOWN. USE WELD-ON #785 SOLVENT AND #9070 PRIMER ON THESE CONNECTIONS.
5. CONNECT ROTARY HEADS TO LATERAL PIPE WITH LASCO UNITIZED, O-RING SWING JOINTS PER DETAIL SHOWN.
6. INSTALL QUICK COUPLING VALVES ON 10" VALVE BOX PER DETAIL SHOWN. CONNECT QUICK COUPLING VALVES TO MAINLINE PIPE WITH LASCO UNITIZED, O-RING SWING JOINTS PER DETAIL SHOWN. SUPPLY OWNER WITH THREE (3) COUPLER KEYS WITH SWIVEL HOSE ELLS EACH.
7. INSTALL REMOTE CONTROL VALVES IN 10" VALVE BOXES PER DETAIL SHOWN.
8. PERFORM ELECTRICAL WORK IN ACCORDANCE WITH LOCAL BUILDING CODE. POWER (120V) SHALL BE LOCATED IN A JUNCTION BOX WITHIN 5 FEET OF CONTROLLER LOCATION BY OTHER TRADES.
9. SLEEVES SHALL BE CLASS 200 PVC, LAG BOLTS PLACED IN SIDEWALK AT ENDS OF SLEEVES AND INSTALLED BY OTHER TRADES.
10. ROUTE COMMON WIRE FROM CONTROLLER TO REMOTE SENSORS IN SERIES PRIOR TO CONNECTIONS TO REMOTE CONTROL VALVES.
11. INSTALL DRIP IRRIGATION WITH 2 EMITTERS FOR EACH SHRUB, 4 EMITTERS FOR EACH TREE.
12. TEN DAYS PRIOR TO START OF CONSTRUCTION, VERIFY STATIC PRESSURE. IF STATIC PRESSURE IS LESS THAN 110 PSI, DO NOT START WORK UNTIL NOTIFIED TO PROCEED BY OWNER.
13. INSTALL PRESSURE REDUCING VALVE IN A 12"x17" VALVE BOX WITHIN FIVE (5) FEET OF ANY BACKFLOW PREVENTOR. DISCHARGE PRESSURE REDUCING VALVE TO BE SET AT APPROX. 80 PSI.
14. ALL WORK INCLUDED IN THE INSTALLATION OF THE IRRIGATION SYSTEM SHALL BE PERFORMED IN ACCORDANCE WITH THE PLANS AND SPECIFICATIONS.
15. THE INSTALLATION OF THE IRRIGATION SYSTEM WILL BE MADE BY AN INDIVIDUAL OR FIRM DULY LICENSED AS AN IRRIGATOR BY THE STATE OF TEXAS.
16. REDUCED PRESSURE ZONE BACK FLOW PREVENTOR SHALL BE INSTALLED AND TESTED UPON INSTALLATION BY A CERTIFIED BACKFLOW TESTER.
17. MAXIMUM LENGTH OF DRIP LINE SHALL BE 275 FEET.
18. THE MAXIMUM SPACING BETWEEN EMISSION DEVICES MUST NOT EXCEED THE MANUFACTURER'S PUBLISHED RADIUS OR SPACING OF THE DEVICE(S).
19. THE IRRIGATION SYSTEMS SHALL NOT UTILIZE ABOVE-GROUND SPRAY EMISSION DEVICES IN LANDSCAPES THAT ARE LESS THAN 48 INCHES NOT INCLUDING THE IMPERVIOUS SURFACES IN EITHER LENGTH OR WIDTH AND WHICH CONTAIN IMPERVIOUS PEDESTRIAN OR VEHICULAR TRAFFIC SURFACES ALONG TWO OR MORE PERIMETERS.
20. SPRINKLER HEADS MUST DIRECT FLOW AWAY FROM ANY ADJACENT SURFACE AND SHALL NOT BE INSTALLED CLOSER THAN FOUR INCHES FROM A HARDSCAPE, SUCH AS, BUT NOT LIMITED TO, A BUILDING FOUNDATION, FENCE, CONCRETE ASPHALT, PAVERS, OR STONES SET IN MORTAR.
21. IRRIGATION SYSTEMS SHALL NOT SPRAY WATER OVER SURFACES MADE OF CONCRETE, ASPHALT, BRICK, WOOD, STONES SET IN MORTAR, OR ANY OTHER IMPERVIOUS MATERIAL, SUCH AS, BUT NOT LIMITED TO, WALLS, FENCES, SIDEWALKS, STREETS, ETC.
22. COVERAGE OF PIPING MUST BE INSTALLED TO PROVIDE MINIMUM DEPTH COVERAGE OF SIX INCHES OF SELECT BACKFILL, BETWEEN THE TOP OF PIPE AND THE NATURAL GRADE OF THE TOP SOIL.
23. UNDERGROUND ELECTRICAL WIRING THAT CONNECTS AN AUTOMATIC CONTROLLER TO ANY ELECTRICAL COMPONENT OF THE IRRIGATION SYSTEM MUST BE BURIED WITH A MINIMUM OF SIX INCHES OF SELECT BACKFILL.

**LEGEND**

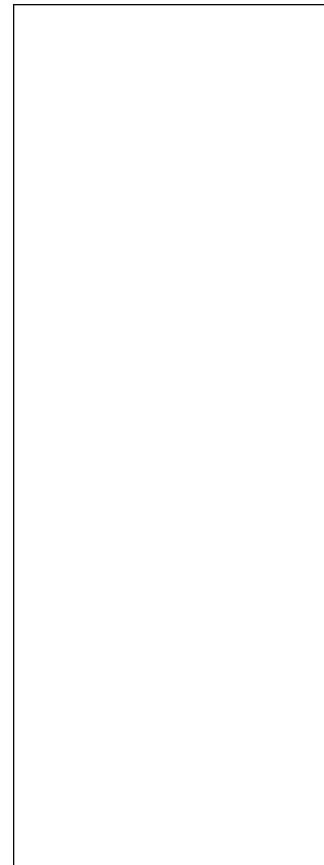
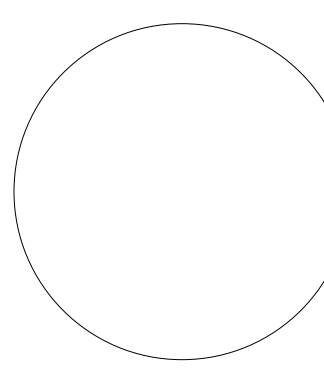
SYMBOL	DESCRIPTION	MANUFACTURER	MODEL NO.
	AREA TO BE IRRIGATED WITH SPRAY HEADS / ROTARY HEADS	RAINBIRD & TORO	
	PLANTING BEDS AND TREES TO BE DRIP IRRIGATED	RAINBIRD	XERI-TUBE 700 W/ XERI-BUBBLER AND XERI-BUG
	BACKFLOW PREVENTER & ENCLOSURE	FEBCO HUBBELL	PER LOCAL BUILDING CODE
	2" WATER METER	CITY APPROVED	PER LOCAL BUILDING CODE
	CONTROLLER	RAINBIRD	ESP-20 - MC PLUS

**BID ALTERNATES**

- SEE SPECIFICATION SECTION 01 23 00 ALTERNATES FOR ADDITIONAL INFORMATION
- ALT. 1: DELETE LANDSCAPING & IRRIGATION
  - ALT. 2: DELETE OUTDOOR PLAZA
  - ALT. 3: DELETE ONE DRIVE THRU LANE
  - ALT. 4: CHANGE CONCRETE PAVING TO ASPHALT
  - ALT. 5: CHANGE FENCE FROM COMPOSITE TO CEDAR
  - ALT. 6: CHANGE MEDALLIONS TO A SINGLE DESIGN
  - ALT. 7: CHANGE MANUFACTURED STONE TO STUCCO
  - ALT. 8: CHANGE METAL ROOF TO ASPHALT SHINGLES
  - ALT. 9: DELETE COILING SECURITY GRILLES
  - ALT. 10: DELETE LIGHTNING PROTECTION SYSTEM
  - ALT. 11: CHANGE LED LIGHTING TO FLUORESCENT
  - ALT. 12: DELETE BACKUP GENERATOR & ATS



**BROWN REYNOLDS WATFORD ARCHITECTS**  
 2700 EARL BURDETT FRYWY SOUTH  
 SUITE 4000 ADDICKS, TEXAS 77445  
 979.694.1791  
 WWW.BRWARCHITECT.COM



COPYRIGHT © 2018 BROWN REYNOLDS WATFORD ARCHITECTS, INC.  
 DATE 06/11/18  
 DRAWN BY JW, JH, DP  
 CHECKED BY MW, RH  
 BRW PROJECT NUMBER 21707200

**LOS FRESNOS CITY HALL**  
 520 EAST OCEAN BLVD  
 LOS FRESNOS, TX 78566

NO.	REVISION	DATE
1	ADDENDUM NO. 4	7/17/18

**L1.2**

**LOS FRESNOS CITY HALL**

**BASE BID**

**BASE BID - Lighting Fixture Schedule**

<b>LOCATION</b>	<b>TYPE</b>	<b>MANUFACTURE/MODEL</b>	<b>VOLTAGE</b>	<b>LAMPING INFO.</b>	<b>REMARKS</b>	
<b><i>BUILDING (INTERIOR, EXTERIOR, SITE)</i></b>						
2X4 RECESSED LED TROFFER	A	LITHONIA	2ACL4 60L NO DIMMING LP835 (WITH DGA24 ACCESSORY IF IN GYP CLGS)	120	47W LED	
2X4 RECESSED W/ BATTERY BACKUP	AE	LITHONIA	2ACL4 60L NO DIMMING LP835 EL14L (WITH DGA24 ACCESSORY IF IN GYP CLGS)	120	47W LED	WITH BATTERY BACKUP
4' OPEN STRIP LUMINAIRE	B	LITHONIA	ZL1N L48 5000LM FST MVOLT 35K 80CRI WH Z SPRING HANGER	120	34W LED	NO DIMMING. ON/OFF ONLY
2 X 2 RECESSED TROFFER	C	MARK	WHSPR 2X2 4800LM 35K 80CRI MIN1 NLIGHT 120 YBC UNIV-MOUNTING	120	45.4W LED	
2 X 2 RECESSED TROFFER W/ BATTERY BACKUP	CE	MARK	WHSPR 2X2 4800LM 35K 80CRI MIN1 NLIGHT 120 YBC UNIV-MOUNTING E10WLCP	120	45.4W LED	W/ BATTERY BACKUP
2 X 2 DIRECT/INDIRECT	E	MARK	WHSPR 2X2 4800LM 35K 80CRI MIN1 NLIGHT 120 YBC UNIV-MOUNTING	120	45.4W LED	
2 X 2 DIRECT/INDIRECT W/ BATTERY BACKUP	EE	MARK	WHSPR 2X2 4800LM 35K 80CRI MIN1 NLIGHT 120 YBC UNIV-MOUNTING E10WLCP	120	45.4W LED	W/ BATTERY BACKUP
6 FT LINEAR RECESSED FLUSH WITH CEILING	F6	MARK	SL4L LOP 6FT FLP GB 80CRI 35K 1000LMF NODIM 120 DPL	120	60W LED	INSTALL FLUSH WITH CEILING
6 FT LINEAR RCSD. FLUSH W/ CLG. W/ BAT. B. UP	F6E	MARK	SL4L LOP 6FT FLP GB 80CRI 35K 1000LMF NODIM 120 E10W DPL	120	60W LED	W/ BATTERY BACKUP
8 FT LINEAR RECESSED FLUSH WITH CEILING	F8	MARK	SL4L LOP 8FT FLP GB 80CRI 35K 1000LMF NODIM 120 DPL	120	80W LED	INSTALL FLUSH WITH CEILING
DECORATIVE 26" DIA PENDANT	G2	VISA	CP3970 L35K FINISH DIFFUSER UPLT	120	110W LED	
DECORATIVE 34" DIA PENDANT	G3	VISA	CP39705L35K FINISH DIFFUSER UPLT	120	120W LED	
6" RECESSED CAN LIGHT	J	LITHONIA	LDN6 35/30 L06 AR LS MVOLT NO DIMMING	120	34.7 W LED	
6" RECESSED CAN LIGHT W/ BATTERY BACKUP	JE	LITHONIA	LDN6 35/30 L06 AR LS MVOLT NO DIMMING ELR	120	34.7 W LED	W/ INTEGRAL BATTERY BACKUP
4 FT LENSED WRAPAROUND	L	LITHONIA	WL4 40L NO DIMMING LP835 SURFACE MOUNT	120	39.5W LED	NO DIMMING. ON/OFF ONLY
4 FT LENSED WRAPAROUND W/ BATTERY B.UP	LE	LITHONIA	WL4 40L NO DIMMING LP835 EL14L SURFACE MOUNT	120	39.5W LED	W/ INTEGRAL BATTERY BACKUP
4 FT LENSED SURFACE MOUNT WRAPAROUND	L1	LITHONIA	STL4 40L NO DIMMING LP835 N100 EL14L F2 MOUNTING	120	35W LED	SURFACE MOUNTED
4 FT LENSED S. MNT. WRAP. W/ BATTERY B.UP	L1E	LITHONIA	STL4 40L NO DIMMING LP835 N100 EL14L F2 MOUNTING	120	35W LED	SURFACE MOUNTED W/ INTEGRAL BATTERY B. UP.
RECESSED CAN AT RECEPTION AREA	M	JUNO	4RLD G3 09LM 35K 90CRI 120 FRPC WWH M6 with HOUSING: IC1RLEDT24	120	13.5W LED	RECESSED
TROPHY CASE RECESSED PUCK LIGHT	P	JUNO	USTLR1 30K 80CRI BZ, PROVIDE WITH TRANSFORMER	12 VOLT	3.8W LED	RECESS HEAD, REMOTE MOUNT TRANSFORMER
EXTERIOR LUMINAIRE WALL MOUNTED	Q	SELUX	SATURN 1 LED SA1L TA W L26 30 BZ UNV	120	26W LED	WALL MOUNT AT 10' AFF
EXTERIOR LUMINAIRE WALL MNTD. W/ B. BACKUP	QE	SELUX	SATURN 1 LED SA1L TA W L26 30 BZ UNV (PROVIDE INVERTER EMERGENCY BATTERY BACKUP)	120	26W LED	WALL MOUNT AT 10' AFF, W/ INVERTER BAT. B.UP
EXTERIOR LIGHTING BOLLARD	QB	LITHONIA	KBD8 16C 700 30K SYM MVOLT SF DDBTXD and Anchor Bolt Kit for KBD8 LED	120	39W LED	
6" EXTERIOR RECESSED CAN LIGHT	QD	LITHONIA	LDN6 30/20 L06 AR LS MVOLT NO DIMMING	120	22.6W LED	
6" EXTERIOR RECESSED CAN W/ BATTERY BACKUP	QDE	LITHONIA	LDN6 30/20 L06 AR LS MVOLT NO DIMMING ELR	120	22.6W LED	W/ INTEGRAL BATTERY BACKUP
EXTERIOR LIGHT - POLE MOUNTED	QG	LITHONIA	DSX1 LED P4 30K TFTM MVOLT MOUNTING SF DDBTXD and LITHONIA POLE RSA 25 6E	120	125W LED	POLE MOUNT AT 25' AFF
OPEN/CLOSED ILLUMINATED SIGNAGE	QL	SIGNAL-TECH	5887 TCL718GR-100	120	5W LED	
EXTERIOR LUMINAIRE ON POLE W/ B. BACKUP	QP	SELUX	SATURN 1 LED SA1L TA 1 L26 30 BZ UNV WITH POLE A35 10FT BZ BC1	120	26W LED	MOUNT AT 10' AFF
EXTERIOR STEP LIGHTING	QS	BEGA	22 130 K3 DBZ	120	3.4W LED	
EXTERIOR RECESSED SOFFIT LIGHTS AT TOWER	QT	ZUMTOBEL	PANOS D N 150 R L 13W 830 MS W and Driver: PANOS FE 150DL R 13W NO DIMMING 1 and FO409626 MOUNTING PLATE	120	13W LED	RECESSED IN SOFFIT
EXTERIOR WALL MNTD. CYLINDER W/ BAT. B. UP	QWE	VISION 3	WM2A BNT RND C3 MO12 LAMP-139-30K (PROVIDE INVERTER EMERGENCY BATTERY BACKUP)	120	18W LED	WITH INVERTER BATTERY BACKUP
PENDANT MOUNTED DIRECT/INDIRECT	R	FINELITE	S12-ID DCO 8' 4E S/H 8 35 30U70D 120 SC FA CE C4	120	128W LED	8' FIXTURE LENGTH
UNDERCABIINET LIGHT 2' LENGTH	S2	JUNO	UPLED22 30K 80CRI WH AND ACCESSORIES AS REQUIRED	120	8.1W LED	CONTROL WITH WALL MOUNTED LIGHT SWITCH
UNDERCABIINET LIGHT 4' LENGTH	S4	LITHONIA	UPLED22 30K 80CRI WH AND ACCESSORIES AS REQUIRED TO JOIN TWO (2) UPLED22 ACHIEVING 44" LUMINAIRE	120	16.2W LED	CONTROL WITH WALL MOUNTED LIGHT SWITCH
4 FT LENSED WRAPAROUND W/ BATTERY B.UP	VE	LITHONIA	WL4 40L NO DIMMING LP835 EL14L SURFACE MOUNT	120	39.5W LED	W/ INTEGRAL BATTERY BACKUP
EXIT SIGNAGE (ILLUMINATED) W/ BATTERY B.UP.	X	LITHONIA	EDGR W R EL (NUMBER OF FACES BY CONTRACTOR)	120	3.8W LED	RECESSED WHEN POSSIBLE

**NOTES FOR ALL LUMINAIRES:**

1. INCLUDE ALL MOUNTING HARDWARE, ADDAPTABLE TO CEILING OR WALL APPLICATIONS
2. ALL LAMPS SHALL HAVE THE SAME COLOR, 3500K, AND A MINIMUM OF 82 CRI.
3. ALL EXTERIOR LUMINAIRES SHALL HAVE A DARK BRONZE COLOR FINISH
4. ALL EXTERIOR LUMINAIRES SHALL BE CONTROLLED THROUGH A SINGLE WALL MOUNTED PHOTOCELL, EXCEPT WHERE OTHERWISE INDICATED.
5. **ALL LUMINAIRES SHALL BE COMPLETELY INSTALLED, INCLUDING CORRECT LAMPS, DRIVERS, DIMMING WHERE REQUIRED, BALLASTS, CONTROLS, CABLING, SENSORS, CONDUIT, ETC., FOR A COMPLETE AND FULLY FUNCTIONAL LIGHTING SYSTEM.**

**LOS FRESNOS CITY HALL  
ALTERNATE # 11 - LIGHTING PACKAGE**

Alternate # 11 Bid Schedule

LOCATION	TYPE	MANUFACTURE	MODEL	VOLTAGE	LAMPING INFO.	REMARKS
<b>BUILDING (INTERIOR, EXTERIOR, SITE)</b>						
2 X 4 RECESSED TROFFER	A	LITHONIA	2GT8 3 FW A12 120 GEB10PS	120	96W FL	NO DIMMING. ON/OFF ONLY
2 X 4 RECESSED TROFFER W/ BATTERY BACKUP	AE	LITHONIA	2GT8 3 FW A12 120 GEB10PS EL	120	96W FL	W/ INTEGRAL BATTERY BACKUP
4' OPEN STRIP LUMINAIRE	B	LITHONIA	Z 1 32 120 GEB10PS MOUNTING	120	32W FL	NO DIMMING. ON/OFF ONLY
2 X 2 RECESSED TROFFER	C	LITHONIA	2GT8 3 U316 FW A12 120 GEB10PS	120	63W FL	
2 X 2 RECESSED TROFFER W/ BATTERY BACKUP	CE	LITHONIA	2GT8 3 U316 FW A12 120 GEB10PS EL	120	63W FL	W/ INTEGRAL BATTERY BACKUP
2 X 2 DIRECT/INDIRECT	E	LITHONIA	2AL8 3 CF40 MVOLT GEB10PS LP835 (DGA22 DRYWALL CEILING ADAPTOR IF REQUIRED)	120	120W CF	
2 X 2 DIRECT/INDIRECT W/ BATTERY BACKUP	EE	LITHONIA	2AL8 3 CF40 MVOLT GEB10PS LP835 EL14 (DGA22 DRYWALL CEILING ADAPTOR IF REQUIRED)	120	120W CF	W/ INTEGRAL BATTERY BACKUP
6 FT LINEAR RECESSED FLUSH WITH CEILING	F6	MARK	SL4F LOP 6FT FL 2 T8 GEB10PS 120 FA	120	52W FL	
6 FT LINEAR RECESSED FLUSH WITH CEILING	F6E	MARK	SL4F LOP 6FT FL 2 T8 GEB10PS 120 FA EMPK	120	52W FL	W/ BATTERY BACKUP
8 FT LINEAR RECESSED FLUSH WITH CEILING	F8	MARK	SL4F LOP 8FT FL 2 T8 GEB10PS 120 FA	120	128W FL	
DECORATIVE 26" DIA PENDANT	G2	VISA	CP3970 L35K FINISH DIFFUSER UPLT	120	110W LED	
DECORATIVE 34" DIA PENDANT	G3	VISA	CP39705L35K FINISH DIFFUSER UPLT	120	120W LED	
6" RECESSED CAN LIGHT	J	LITHONIA	LDN6 35/30 L06 AR LS MVOLT NO DIMMING	120	34.7 W LED	
6" RECESSED CAN LIGHT W/ BATTERY BACKUP	JE	LITHONIA	LDN6 35/30 L06 AR LS MVOLT NO DIMMING ELR	120	34.7 W LED	W/ INTEGRAL BATTERY BACKUP
4 FT LENSED WRAPAROUND	L	LITHONIA	CB 2 32 MVOLT GEB10PS HRC	120	64W FL	SURFACE MOUNTED
4 FT LENSED WRAPAROUND W/ BATTERY B.UP	LE	LITHONIA	CB 2 32 MVOLT GEB10PS HRC EL	120	64W FL	SURFACE MOUNTED W/ INTEGRAL BATTERY B. UP.
4 FT LENSED WRAPAROUND	L1	LITHONIA	CB 1 32 MVOLT GEB10PS HRC	120	32W FL	SURFACE MOUNTED
4 FT LENSED WRAPAROUND W/ BATTERY B.UP	L1E	LITHONIA	CB 1 32 MVOLT GEB10PS HRC EL	120	32W FL	SURFACE MOUNTED W/ INTEGRAL BATTERY B. UP.
RECESSED CAN AT RECEPTION AREA	M	JUNO	4RLD G3 09LM 35K 90CRI 120 FRPC WWH M6 with HOUSING: IC1RLEDT24	120	13.5W LED	RECESSED
TROPHY CASE RECESSED PUCK LIGHT	P	JUNO	USTLR1 30K 80CRI BZ, PROVIDE WITH TRANSFORMER	12 VOLT	3.8W LED	RECESS HEAD, REMOTE MOUNT TRANSFORMER
EXTERIOR LUMINAIRE WALL MOUNTED	Q	SELUX	SATURN 1 LED SA1L TA W L26 30 BZ UNV	120	26W LED	WALL MOUNT AT 10' AFF
EXTERIOR LUMINAIRE WALL MNTD. W/ B. BACKUP	QE	SELUX	SATURN 1 LED SA1L TA W L26 30 BZ UNV (PROVIDE INVERTER EMERGENCY BATTERY BACKUP)	120	26W LED	WALL MOUNT AT 10' AFF, W/ INVERTER BAT. B.UP
EXTERIOR LIGHTING BOLLARD	QB	LITHONIA	KBD8 16C 700 30K SYM MVOLT SF DDBTXD and Anchor Bolt Kit for KBD8 LED	120	39W LED	
6" EXTERIOR RECESSED CAN LIGHT	QD	LITHONIA	LDN6 30/20 L06 AR LS MVOLT NO DIMMING	120	22.6W LED	
6" EXTERIOR RECESSED CAN W/ BATTERY BACKUP	QDE	LITHONIA	LDN6 30/20 L06 AR LS MVOLT NO DIMMING ELR	120	22.6W LED	W/ INTEGRAL BATTERY BACKUP
EXTERIOR LIGHT - POLE MOUNTED	QG	LITHONIA	DSX1 LED P4 30K TFTM MVOLT MOUNTING SF DDBTXD and LITHONIA POLE RSA 25 6E	120	125W LED	POLE MOUNT AT 25' AFF
OPEN/CLOSED ILLUMINATED SIGNAGE	QL	SIGNAL-TECH	5887 TCL718GR-100	120	5W LED	
EXTERIOR LUMINAIRE ON POLE W/ B. BACKUP	QP	SELUX	SATURN 1 LED SA1L TA 1 L26 30 BZ UNV WITH POLE A35 10FT BZ BC1	120	26W LED	MOUNT AT 10' AFF
EXTERIOR STEP LIGHTING	QS	BEGA	22 130 K3 DBZ	120	3.4W LED	
EXTERIOR RECESSED SOFFIT LIGHTS AT TOWER	QT	ZUMTOBEL	PANOS D N 150 R L 13W 830 MS W and Driver: PANOS FE 150DL R 13W NO DIMMING 1 and FO409626 MOUNTING PLATE	120	13W LED	RECESSED IN SOFFIT
EXTERIOR WALL MNTD. CYLINDER W/ BAT. B. UP	QWE	VISION 3	WM2A BNT RND C3 MO12 LAMP-139-30K (PROVIDE INVERTER EMERGENCY BATTERY BACKUP)	120	18W LED	WITH INVERTER BATTERY BACKUP
PENDANT MOUNTED DIRECT/INDIRECT	R	FINELITE	S12-ID DCO 8" 2 T8 SC 91W STO 120 AC CE CEILING TYPE 0.88	120	128W FL	8' FIXTURE LENGTH
UNDERCABIINET LIGHT 2' LENGTH	S2	LITHONIA	N2S 17 120 GEB10PS	120	17W FL	
UNDERCABIINET LIGHT 4' LENGTH	S4	LITHONIA	N2S 32 120 GEB10PS	120	32W FL	
4 FT LENSED WRAPAROUND W/ BATTERY B.UP	VE	LITHONIA	CB 2 32 MVOLT GEB10PS HRC EL	120	64W FL	SURFACE MOUNTED W/ INTEGRAL BATTERY B. UP.
EXIT SIGNAGE (ILLUMINATED) W/ BATTERY B.UP.	X	LITHONIA	EDGR W R EL (NUMBER OF FACES BY CONTRACTOR)	120	3.8W LED	RECESSED WHEN POSSIBLE

NOTES FOR ALL LUMINAIRES:

1. INCLUDE ALL MOUNTING HARDWARE, ADDAPTABLE TO CEILING OR WALL APPLICATIONS
2. ALL LAMPS SHALL HAVE THE SAME COLOR, 3500K, AND A MINIMUM OF 82 CRI.
3. ALL EXTERIOR LUMINAIRES SHALL HAVE A DARK BRONZE COLOR FINISH
4. ALL EXTERIOR LUMINAIRES SHALL BE CONTROLLED THROUGH A SINGLE WALL MOUNTED PHOTOCELL, EXCEPT WHERE OTHERWISE INDICATED.
5. **ALL LUMINAIRES SHALL BE COMPLETELY INSTALLED, INCLUDING CORRECT LAMPS, DRIVERS, DIMMING WHERE REQUIRED, BALLASTS, CONTROLS, CABLING, SENSORS, CONDUIT, ETC., FOR A COMPLETE AND FULLY FUNCTIONAL LIGHTING SYSTEM.**

7/16/2018